

EACH PIECE, A MASTERPIECE



*Mottahedeh*

# Mottahedeh

## Table of Contents

### Dinnerware Patterns

Blue Canton	D-1	Blue Shou	D-37
Tobacco Leaf	D-9	Virginia Blue	D-43
Ch'ing Garden	D-11	Green Lace	D-45
Imperial Blue	D-13	Apple Lace	D-46
Blue Lace	D-14	Cornflower Lace	D-46
Blue Dragon	D-14C	Pink Lace	D-46C
Famille Verte	D-15	Peacock	D-46E
Sacred Bird & Butterfly	D-18A	Chelsea Feather Gold	D-46F
Mandarin Bouquet	D-19	Emmeline	D-51
Cincinnati Service	D-20A	Indigo Wave	D-53
Gabriel	D-20B	Sylvaniae	D-55
Duke of Gloucester	D-21	Bargello	D-56
Chelsea Bird	D-25	Starburst Medallion	D-59
Prosperity	D-27	Barriera Corallina	D-61
Chinoise Blue	D-29	Service Plates	D-63
Golden Butterfly	D-33	Leaf	M-1
Palma	D-35	Tin Picnic Sets	M-3

### Giftware

General Giftware	G-1
American Ships	G-5
Diplomatic Service	G-6
Ring Trays	G-9
Majolica	G-13
Birds	G-16
Creamware	G-17
Rookwood	G-27
Heirluminare Votives	G-29
Heirsavonare Soaps	G-32

### Lamps

Lamps	P-116
-------	-------

# *Mottahedeh*



Dinnerware

# Mottahedeh



## BLUE CANTON

The most fashionable tables in early American Republic were set with blue and white "Canton" or "Nanking" wares, named for the great Chinese trading ports from which they came. Chinese blue and white porcelain was in demand in this country well into the nine-teenth century and has become a part of the heritage of many American families. Blue Canton faithfully recaptures the centuries-old tradition and taste.

- HC100 *Five Piece Place Setting*
- HC101 *Dinner Plate (10" dia.)*
- HC102 *Dessert Plates, set of 4 (8½" dia.)*
- HC103 *Bread and Butter Plate (6¾" dia.)*
- HC104 *Teacup and Saucer*
- HC117 *Master Salt (4" x 3")*
- HC142 *Pot de Creme (3 1/4" h)*

- HC88 *Large Dinner Plate (10 3/4" dia.)*



# Mottahedeh



## BLUE CANTON

Recognized by the blue lattice border surrounding a variety of landscape scenes, this popular Chinese pattern inspired a number of European versions, most notably English stoneware.

HC107 Coffeepot (48 oz., 9" h.)

HC108 Teapot (40oz., 6 1/2" h.)

HC110 Creamer (3 1/2" h.)

HC109 Sugar (4 3/4" h.)



HC136 Large Cup and Saucer (Cup 4 1/2" dia.)

HC149 Can Cup and Saucer (2 1/4" h.)

HC104 Tea Cup and Saucer (3 3/4" dia.)

HC103 Demitasse Cup and Saucer (1 1/2" h.)

HC1131 Mug (4 1/2" h.)

HC148 Shang Mug (4" h.)

HC142 Cereal Bowl (6 1/2" dia.)



# Mottahedeh



## BLUE CANTON



- HC106 *Rim Soup Plate (9¼" dia.)*
- HC93 *Octagonal Tureen and Platter (Tureen 12½" l., Platter 15½" l.)*

- HC138 *Dessert Bowl (SIZE???)*



- HC136B *Fruit Saucer (6¼" dia.)*
- HC92 *Coasters, Set of 4 (3¼" dia.)*



- HC118 *Temple Jar (9½" h.)*

- HC125 *Four-Lobed Cachepot (8½" x 6½")*



- HC137 *Oval Tray (7½" l.)*
- HC133 *Cigarette Cup (3½" h.)*
- HC122 *Covered Square Box (4" h.)*
- HC115 *Leaf Tray (6½" l.)*



# Mottahedeh



## BLUE CANTON



- S207 Square Baking Dish (9")
- S208 Quiche Dish (11" dia.)
- S206 Ramekin (3½" dia.)

HC188 Small Covered Jar (6½" h.)

HC156 Crescent Salad Plate (8½" l.)

- HC120 Cookie Plate (10½" l.)
- HC138 Candy Dish (7" dia.)

HC157 Cake Plate (12¼" dia.)

- HC95 Oval Vegetable (13" x 9¾")
- HC97 Medium Platter (13½" dia.)

HC121 Shell Dish (8¼" dia.)



# Mottahedeh



## BLUE CANTON

- HC128 Covered Oval Box (5¼" l.)
- HC91 Mustard Pot (2¼" h.)
- HC134 Octagonal Tile (5¼" h.)
- HC135 Round Tile (5¼" h.)
- HC142 Pot de Creme (3½" h.)
- HC129 Sauce Boat (7" l.)
  
- HC127 Covered Vegetable (10" x 9¼")
- HC117 Master Salt (4¼" dia.)
  
- HC126 Small Square Bowl (6½" x 6½")
- HC112 Square Salad Bowl (9" x 9" x 3½" h.)
- HC90 Porringer (6½" l.)
- HC116 Scalloped Bowl (10½" dia.)
  
- S4875 Vung Tau Vase (6½" h.)



# Mottahedeh



## BLUE CANTON

- S204 Oval Casserole (13" l., x 9" w.)
- S205 Medium Rectangular Baker (12" l. x 8½" w.)
- S203 Round Souffle (8" dia.)

S1621 Dagger Mountain Plate (11¼" dia.)

HC143 Sauce Tureen and Stand (7½" x 5½")

HC144 Pitcher (4" h.)

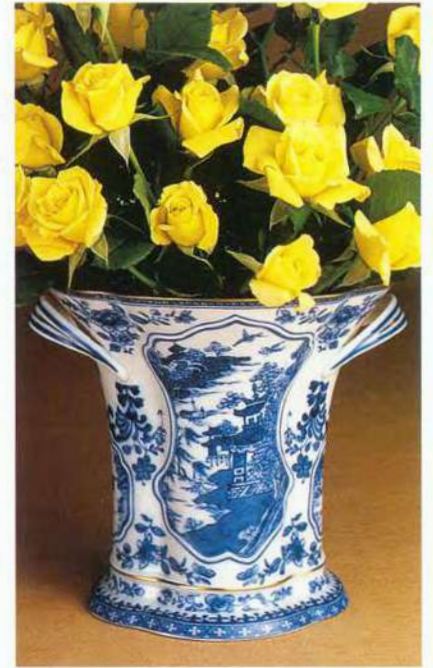
HC113 Pitcher (6½" h.)

HC114 Pitcher (4" h.)

S111 Milk Pitcher (3¾" h.)



# Mottahedeh



## BLUE CANTON

- HC132 Ginger Jar (16" h.)
- HC139 Tea Jar, Large (14" h.)
- S192 Tea Jar, Small (10¼" h.)
- HC96 Bough Vase (7" h.)
- HC85 Round Dish (4½" dia.)

- HC99 Bell Candlestick (10" h.)
- HC191 Small Platter (9½" x 12")
- S1629 Salt and Pepper Set (2½" h.)
- HC86 Fu Dog Jar (6½" h.)
- HC140 Cider Jug with Lid (10½" h.)




# Mottahedeh



Interior detail



## BLUE CANTON

- S190 Diane Basket (10½" L.) 
- HC80 Small Lobed Tray (4¾" L.)
- HC81 Medium Lobed Tray (6" L.)
- HC87 Large Square Bowl (10¼" dia.)
- HC83 Trumpet Vase (11" h.)
- HC84 Monteith Cachepot (10½" L., 6" h.)
- HC146 Casserole (ovenproof) (10" x 5")
- HC89 Oval Tureen and Stand (Tureen 12½" L., Stand 17" L.)



# Mottahedeh



## TOBACCO LEAF

This extravagant design was originally made in China, probably for export to the Portuguese and Brazilian markets. Of all the 18th-century dinnerware patterns, this was the most highly prized. A small phoenix bird perches on the leaves of the flowering Nicotiana (Tobacco) plant. Twenty-seven colors and 22k gold make up this pattern based on an original in the Metropolitan Museum of Art.

- Y2335 *Five Piece Place Setting*
- Y2336 *Dinner Plate (10½" dia.)*
- Y2337 *Dessert Plate (8½" dia.)*
- Y2338 *Bread and Butter Plate (7½" dia.)*
- Y2339 *Cup and Saucer (cup 2½" h.)*
- Y2340 *Rim Soup (10" dia.)*
- Y2346 *Master Salt (4¼" l.)*



- Y2348 *Round Bowl, large (9" dia.)*
- Y2349 *Round Bowl, small (8" dia.)*

# Mottahedeh



## TOBACCO LEAF

Y2367 *Small Tureen and Stand (12 oz.)*  
 Y2341 *Tureen (4 qt.)*

S2370 *Leaf Candy Dish (8" l, 5½" w.)*

S2371 *Cream soup and saucer (6" l, 5" w, 2" h.)*

Y2353 *Shell dish (8¼" dia.)*  
 S2359 *Pomegranate box/Stand (9¼" w.)*  
 S2369 *Eggplant Box/Stand (9" l.)*



*Cream Soup Handle*



# Mottahedeh



## TOBACCO LEAF

- Y2357 *Ginger Jar (16½" h.)*
- Y2360 *Trumpet Vase (11" h.)*
- Y2372 *Divina Vase (15¼" h.)*

- Y2342 *Teapot*
- Y2343 *Coffeepot*
- Y2344 *Covered Sugar*
- Y2345 *Creamer*

- Y2363 *Leaf Dish, Large (11½" L, 9" w.)*
- Y2354 *Octagonal Tray (8" dia.)*
- Y2352 *Oval Tray (7½" L, 5¼" w.)*
- Y2368 *Rectangular Tray (7½" L, 6¼" w.)*



# Mottahedeh



## TOBACCO LEAF

S2708A *Man Epergne, Large (25½" h.)*

S2709A *Man Epergne, Small (17¼" h.)*

Y2358 *Small Cachepot (4½" dia.)*

Y2347 *Cachepot (10" dia.)*

Y2364

Y2341A

Y2356

*Chop Plate (13" dia.)*

*Octagonal Platter (15" l.)*

*Mug (size???)*



# Mottahedeh



## CH'ING GARDEN

This exquisite design was inspired by hand painted 18th century Chinese wallpaper in the dining room of the Lightfoot House at Colonial Williamsburg. The decoration incorporates blossoming trees, hanging baskets of flowers and exotic birds. These were common features in Chinese inspired decorative arts, known as Chinoiserie, which were popular in Europe and colonies in the 18th Century.

- CW1600 Five Piece Place Setting
- CW1601 Dinner Plate (10" dia.)
- CW1602 Dessert Plates, set of 4 (8½" dia.)
- CW1603 Bread and Butter Plate (6¾" dia.)
- CW1604 Teacup and Saucer
- CW1607 Medium Platter (13½" l.)



# Mottahedeh



## CH'ING GARDEN



CW1602 *Dessert Plates, Set of 4 (8½" dia.)*

CW1612 *Cream Soup and Saucer (4¾" dia.)*

CW1613 *Dessert Bowl (4¼" dia.)*

CW1611 *Chop Plate (13" dia.)*

CW1609 *Large Square Bowl (8¾" dia.)*

CW1608 *Small Square Bowl (6¼" dia.)*



# Mottahedeh



## IMPERIAL BLUE

Since the Ming Dynasty, imperial blue and white porcelains have been prized by collectors and connoisseurs around the world. Edged in 22K gold, this underglaze blue dinner service is based on a Chinese export porcelain pattern, ca. 1730. The elegant design features a central flowered medallion, continuous collar and floral sprays.

- CW2400 Five Piece Place Setting
- CW2401 Dinner Plate (10½" dia.)
- CW2402 Dessert Plate (8½" dia.)
- CW2403 Bread and Butter Plate (7" dia.)
- CW2404 Teacup/Saucer
- CW2405 Rim Soup Plate (9" dia.) not shown

- CW2426 Oval Platter (15"L)
- CW2420 Medium Creamer (4½" h.) **D**
- CW2416 Dessert Bowl (4¼" dia.)

- 
- CW2411 Round Bowl (9" dia.)
  - CW2418 Scalloped Bowl (8" dia.)



# Mottahedeh



## IMPERIAL BLUE

- CW2408 Teapot (6½" h.)
- CW2407 Coffeepot (9½" h.)
- CW2410 Creamer (4¼" h.)
- CW2409 Sugar Bowl (2¼" h.)

CW2422 Ginger Jar (17" h.)

CW2421 Trumpet Vase (11¼" h.)

CW2424 Mug (4½" h.)

CW2417 Coaster (4¾" dia.)

CW2412 Large Round Box (4½" dia.)

CW2413 Small Round Box (2½" dia.)

Items not shown

CW2406 Demitasse Cup/Saucer

CW2415 Leaf Tray (10½" l.)



## BLUE LACE

This versatile pattern with its delicate border was inspired by Chi'ng Dynasty (1644-1911) porcelain from China. Highlighted by bands of 22k gold, this elegant design makes a stunning presentation and coordinates beautifully with other services.

- S1650 Five Piece Place Setting
- S1651 Dinner Plate (10¼" dia.)
- S1652 Dessert Plate (8¼" dia.)
- S1653 Bread and Butter Plate (7" dia.)
- S1654 Teacup/Saucer
- S1655 Cream Soup and Saucer



# Mottahedeh



## BLUE LACE

This versatile pattern with its delicate border was inspired by Ch'ing Dynasty (1644-1911) porcelain from China. Highlighted by bands of 22k gold, this elegant design makes a stunning presentation and coordinates beautifully with other services.

- S1650 Five Piece Place Setting
- S1651 Dinner Plate (10 1/4" dia.)
- S1652 Dessert Plate (8 1/2" dia.)
- S1653 Bread and Butter Plate (7" dia.)
- S1654 Teacup and Saucer (3 1/2" dia.)

- S1705GL Lace Service Plate Gold (12" dia.)
- S1705B Lace Service Plate Blue (12" dia.)
- S1705BK Lace Service Plate Black (12" dia.)
- S1705G Lace Service Plate Green (12" dia.)
- S1705R Lace Service Plate Red (12" dia.)
- S1705P Lace Service Plate Plum (12" dia.)



# Mottahedeh



## BLUE LACE



S1661 Round Bowl (9" dia.)

S1676 Platter (15" L)

S1677 Pitcher (7¼" h.)

S2421 Fluted Tray Large (9¼" x 11½")

S2420 Fluted Tray Small (6½" x 8¼")

S1655 Cream Soup and Saucer (4¾" dia.)

CW2424 Pitcher (7¼" h.)



## IMPERIAL BLUE

# Mottahedeh



## BLUE DRAGON

In ancient China the dragon became the symbol for the emperor, bestowing good fortune and protection to the righteous. The period of the emperor K'ang Hsi (1622-1722) was one of the high points in the development of blue and white wares. This period inspired this classic design.

- |        |                                   |       |                          |
|--------|-----------------------------------|-------|--------------------------|
| S1740  | Five Piece Place Setting          | S1748 | Oval Platter (13¾" l.)   |
| S1741  | Dinner Plate (10¼" dia.)          | S1746 | Bowl, Small (8" dia.)    |
| S1742  | Dessert Plate (8½" dia.)          | S1747 | Bowl, Large (9½" dia.)   |
| S1742A | Dessert Plate w/Dragon (8½" dia.) | S1770 | Shell Dish (8¼" dia.)    |
| S1743  | Bread and Butter Plate (7" dia.)  | S1749 | Service Plate (12" dia.) |
| S1744  | Tea Cup and Saucer (3½" dia.)     |       |                          |



# Mottahedeh



## FAMILLE VERTE

This graceful design, with its leaves, berries and butterflies, was derived directly from antique Chinese Palace porcelain. At a time when porcelain was valued because of its rarity, highly prized examples found their way to Europe, and into the hands of avid collectors. Often fitted with mounts of precious metal,

they became gifts fit for kings. Many porcelain pieces produced in China during the Kangxi Period (1662-1722) had famille verte decoration — painted in transparent enamel colors, predominantly in shades of green. Mottahedeh's group is true to the eighteenth century spirit of this pattern.

- Y1670 *Five Piece Place Setting*
- Y1671 *Dinner Plate (10" dia.)*
- Y1672 *Dessert Plate (8½" dia.)*
- Y1673 *Bread and Butter Plate (6¾" dia.)*
- Y1674 *Can Cup and Saucer (Cup 2¼" h.)*
- Y1723 *Covered Vegetable (12½" x 8"x 6½")*

# Mottahedeh



## FAMILLE VERTE

Y1681 *Tureen and Octagonal Platter*

(Tureen 4 qt., 12½" L.)

Y1681A *Octagonal Platter*

(12½" L.)

Y1675 *Rim Soup Plate (10" dia.)*

Y1679 *Large Bowl (8½" dia.)*

Y1677 *Coupe Dessert Plate*

(8¼" dia.)

Y1676 *Cereal Bowl (6½" dia.)*

Y1680 *Small Bowl (7½" dia.)*

Y1709 *Shell Dish (8¼" dia.)*

Y1704 *Small Tureen and Stand*

(Tureen 12 oz., 8"x 5½",  
Stand 7¾"x 5¾")

Y1698 *Mug (4" h.)*

Y1696 *Porringer (6" L.)*

Y1714 *Rectangular Tray, Small*

(5½"x 4½")

Y1715 *Rectangular Tray, Large*

(7½"x 6")



# Mottahedeh



## FAMILLE VERTE

- Y1699 *Small Ginger Jar (8½" h.)* **1699c Lamp**
- Y1686 *Demitasse Cup and Saucer*
- Y1678 *Tea Cup and Saucer*
- Y1684 *Open Sugar/Dessert Bowl (4¾" dia.)*
- Y1683 *Coffeepot (9¾" h.)*
- Y1685 *Creamer (4½" h.)*
- Y1682 *Teapot (6½" h.)*
  
- Y1720 *Cookie Tray (10½" l. x 7½" w.)*
- Y1721 *Low Square Bowl (8½" x 8½")*
  
- Y1703 *Pitcher (7" h.)*
- Y1690 *Oval Tray (7½" x 5")*
  
- Y1705 *Chop Plate (13" dia.)*



# Mottahedeh



## FAMILLE VERTE

Y1697 Trumpet Vase (11" h.)

S1880 Five-lobed Cachepot (9¼" h., 12" dia.)

Y1708 Master Salt (4¼" l.)

Y1688 Fu Dog Jar (7½" dia., 9¾" h.)

Y1691 Four-lobed Cachepot (8¼" l., 4½" h.)



# Mottahedeh



## SACRED BIRD AND BUTTERFLY

The original of this magnificent Chinese export pattern may be found set in the dining room of Charleston's famed Nathaniel Russell House. Butterflies, a popular design in China, are often found as porcelain decoration or embroidered on robes. Perhaps the popularity of the butterfly comes, in part, from the fact that the Chinese word for butterfly, *tieh*, is a pun which expresses the wish that the owner might live to a ripe old age. Mottahedeh, in cooperation with Historic Charleston, offers an updated version of the well known Sacred Bird and Butterfly pattern. The decoration is more dense than the original Mottahedeh pattern and is true to the antique. The name reflects the many birds and butterflies featured in the design.

- HC600 *Five Piece Place Setting*
- HC601 *Dinner Plate (10" dia.)*
- HC602 *Dessert Plate (8½" dia.)*
- HC603 *Bread and Butter Plate (6¾" dia.)*
- HC604 *Teacup and Saucer (3¾" dia.)*



# Mottahedeh

## SACRED BIRD AND BUTTERFLY



HC628 *Large Square Bowl*  
(9" x 9")

HC629 *Small Square Bowl*  
(6½" x 6½")



HC627 *Oval Platter* (14")

HC613 *Scalloped Bowl* (10½" dia.)

HC614 *Lobed Cachepot* (8½" x 6½")



# Mottahedeh

## SACRED BIRD AND BUTTERFLY



- HC647 *Cake Plate (12¼" dia.)*
- HC617 *Fluted Dessert Bowl (5" dia.)*
- HC619 *Shang Vase (6" h.)*

- HC616 *Covered Box (2½" dia., 1" h.)*
- HC615 *Leaf Tray (6½" l., 4¼" w.)*

- HC646 *Crescent Salad Plate (8½" l.)*
- HC618 *Cream Soup (4¾" dia.)*



- HC631 *Mug (4¼" h.)*
- HC605 *Demitasse and Saucer (2½" h.)*
- HC692 *Tea Flask (4" w. x 5" h.)*
- HC632 *Master Salt (4¼" l.)*

# Mottahedeh

## SACRED BIRD AND BUTTERFLY



HC611 Tureen and Octagonal Platter (Tureen 12½" L., Platter 15" L.)



S17830 Wufu Cachepot (9¼" h., 12" dia.)



HC611A Octagonal Platter (15" L.)



HC633 Shell Dish (8¼" dia.)

HC634 Cookie Plate (10½" L.)




# Mottahedeh



## MANDARIN BOUQUET

A charming bouquet in a basket, adapted from an 18th-century Chinese export Hong bowl, is surrounded by the classic blue and white Fitzhugh border. The elements combine easily to create an elegant dinner service.

- W2120 *Five Piece Place Setting*
- W2100 *Dinner Plate (10¼" dia.)*
- W2101 *Dessert Plate (9¼" dia.)*
- W2102 *Bread and Butter Plate (8" dia.)*
- W2103 *Teacup/Saucer*
- W2111 *Fruit Saucer (6" dia.)*
- W2117 *Trumpet Vase (11¼" h.)* 



WINTERTHUR  


# Mottahedeh



## MANDARIN BOUQUET

- W2113 *Demitasse Cup/Saucer* (2½" h.)
- W2114 *Cookie Plate* (10½" L)
- W2304 *Small Box* (2½" dia.)
- W2105 *Leaf Dish* (7¾" L)
- W2107 *Lobed Tray* (6¾" w.)
- W2104 *Square Bowl* (10¼" sq.)
- W2115 *Mug* (4¼" h.)
- W2109 *Platter* (13¾" L)
- W2100B *Fitzhugh Border Dinner Plate* (10¼" dia.)



WINTERTHUR  




# Mottahedeh



## CINCINNATI SERVICE

This is an exact reproduction of George Washington's most famous set of china, produced and decorated in Canton in 1784. It was brought to America on the first U.S. ship to enter the China Trade. Washington was the first President General of the Society of Cincinnatus, which was founded in 1783 to recognize the honorable service of French and American officers during the American Revolution.

- W1110 Five-piece Place Setting
- W1104 Dinner Plate (10¼" dia.)
- W1100 Dessert Plate (9¼" dia.)
- W1105 Bread and Butter (7¾" dia.)
- W1102 Cup and Saucer (cup 2¾" h.)
- W1106 Soup Plate (9¼" dia.) (not shown)



WINTERTHUR



- W1103 Leaf Tray (7¾" l.)
- W1107 Dessert Bowl (5" dia.)
- W1101 Square Bowl (10¼" dia.)



## MANDARIN BOUQUET



W2112 Covered Vegetable (6½" h., 11" w.)



W2110 Salad Bowl (9" dia.)  
W2108 Dessert Bowl (5" dia.)

# Mottahedeh



## GABRIEL COLLECTION

When the ancient Roman city of Pompeii was unearthed in the early eighteenth century, designers at the time revived classical motifs such as angels and laurel wreaths. Our trumpeting archangel Gabriel is adapted in porcelain from a rare pattern book dated 1777, now in the collection of Colonial Williamsburg.

### CURRENT

- S2011 Festival Service Plate Red (12")
- CW2207 Dinner Plate (10" dia.)
- CW2204 Luncheon Plate (8½" dia.)
- CW2206 Mug (4½" h., 3" dia.)
- CW2202 Covered Box (3¾" dia.)
- CW2205 Coaster (4¾" dia.)



### BLACK DISC

- S2014 Festival Service Plate (12")
- CW2507 Dinner Plate (10" dia.)
- CW2504 Luncheon Plate (8½" dia.)
- CW2506 Mug (4½" h., 3" dia.)
- CW2502 Covered Box (3¾" dia.)
- CW2505 Coaster (4¾" dia.)

### BLUE DISC

- S2013 Festival Service Plate (12")
- CW2307 Dinner Plate (10" dia.)
- CW2304 Luncheon Plate (8½" dia.)
- CW2306 Mug (4½" h., 3" dia.)
- CW2302 Covered Box (3¾" dia.)
- CW2305 Coaster (4¾" dia.)

### GREEN

- S2012 Festival Service Plate (12")
- CW2107 Dinner Plate (10" dia.)
- CW2104 Luncheon Plate (8½" dia.)
- CW2106 Mug (4½" h., 3" dia.)
- CW2102 Covered Box (3¾" dia.)
- CW2105 Coaster (4¾" dia.)

### PLUM DISC

- S2015 Festival Service Plate (12")
- CW2707 Dinner Plate (10" dia.)
- CW2704 Luncheon Plate (8½" dia.)
- CW2706 Mug (4½" h., 3" dia.)
- CW2702 Covered Box (3¾" dia.)
- CW2705 Coaster (4¾" dia.)



# Mottahedeh



## THE DUKE OF GLOUCESTER

This extraordinary pattern, featuring twenty colors and 22k gold, is one of the finest manifestations of the Rococo style. The design incorporates colorful fruit and imaginary insects within a rim of green enamel and gold flecking. The dinner service was originally made for William Henry, Duke of Gloucester, circa 1770.

- CW1400 *Five Piece Place Setting*
- CW1440 *Dinner Plates, Set of 4 (10" dia.)*
- CW1460 *Dessert Plates, Set of 4 (8¼" dia.)*
- CW1465 *Bread and Butter Plates, Set of 4 (7¼" dia.)*
- CW1470 *Cups and Saucers, Set of 4 (Cup 2¾" h.)*
  
- CW1524 *Coffeepot (52 oz., 10½" h.)*
- CW1525 *Teapot (40 oz., 7½" h.)*
- CW1529 *Sugar and Creamer Set (4¾" h. & 4½" h.)*
- CW1495 *Demitasse Cup/Saucer*



# Mottahedeh



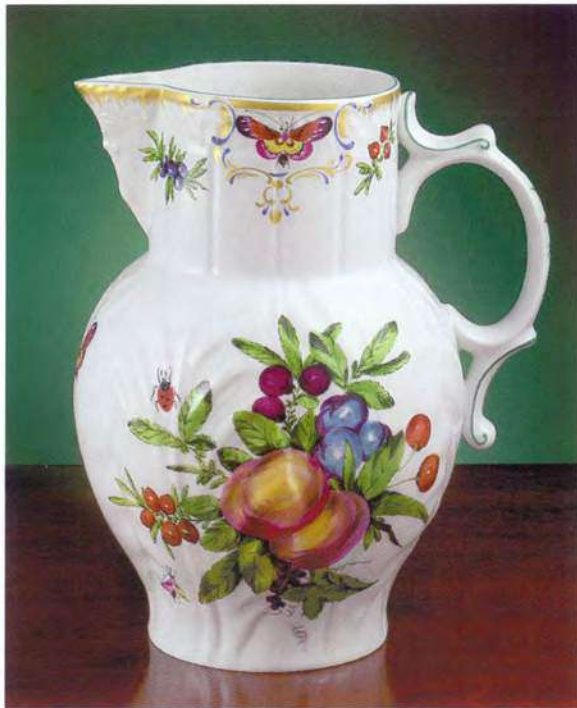
## THE DUKE OF GLOUCESTER

The design shown are faithful to the antique originals.

- CW1440 *Dinner Plates, Set of 4*  
(10" dia.)
- CW1480 *Rim Soup Plates, Set of 4*  
(10" dia., not shown)
- CW1470 *Cups and Saucers, Set of 4*
- CW1450 *Octagonal Platter (11½" l.)*
- CW1540 *Octagonal Platter (15" l.)*
- CW1510 *Tureen and Oval Platter*  
(Tureen 2 qt., (Tureen 2 qt., 8¼" w.)
- CW1520 *Oval Platter (12½" l.)*



# Mottahedeh



## THE DUKE OF GLOUCESTER

Extend the use of Duke of Gloucester into more casual dining and home decoration. These lovely pieces add vibrant color and elegance to breakfast or any time of the day.

CW1490 Pitcher (64 oz., 9" h.)

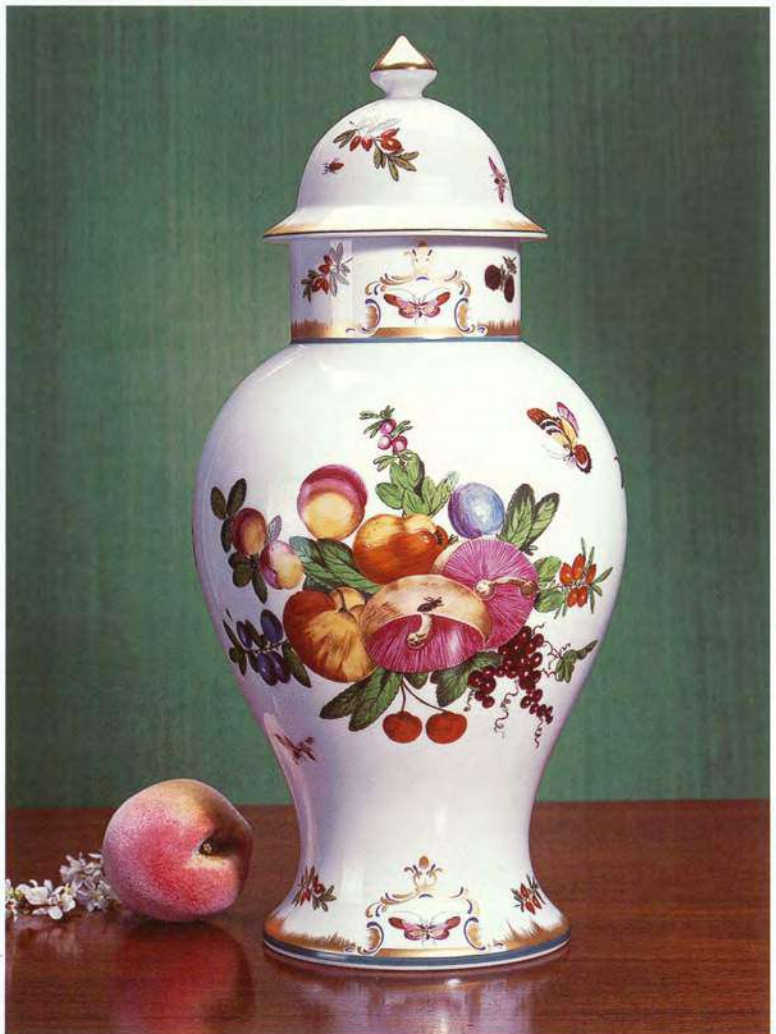
CW1523 Mug (4½" h.)

CW1475 Cereal Bowls, Set of 4 (7½" dia.)

CW1485 Dessert Bowl (4" dia.)

CW1591 Two Handled Vase (9" h.)

CW1592 Ginger Jar (16" h., 8" w.)



# Mottahedeh

## THE DUKE OF GLOUCESTER



CW1580 Salad Bowl (10" dia.)

CW1500 Shell Dish (8 1/4" dia.)

CW1550 Pair of Lobed Trays (6" x 5")

CW1560 Pot de Creme (3 1/4" h.)

CW1571 Small Round Box (2 1/4" dia.)

CW1572 Large Round Box (4 1/2" dia.)

CW1585 Oval Dish (11 3/4" x 9")



# Mottahedeh



## CHELSEA BIRD

Porcelain produced at Chelsea in the eighteenth century is regarded by many as the apex of English ceramic art. Among the most treasured pieces of Chelsea are those decorated in the workshop of James Giles with his birds of “distinctly disheveled appearance”. Our Chelsea Bird pattern has been adapted from Giles’ originals in the collection of Colonial Williamsburg.

- CW2460 *Five Piece Place Setting*
- CW2449 *Dinner Plates – Set of 4 (10" dia.)*
- CW2448 *Cups and Saucers – Set of 4*

CW2451 *Cereal Bowls – Set of 4 (7¼" dia.)*

- CW2440 *Dessert Plates – Set of 4 (8¼" dia.)*
- CW2450 *Rim Soup Plates – Set of 4 (10" dia.)*

CW2452 *Two-Handled Vase (9" h.)*



# Mottahedeh



## CHELSEA BIRD

These plates, vases, shell dishes, trays and pitcher incorporate James Giles' exotic bird designs on shapes of the period. The original rare set of plates, from which this pattern was reproduced, was made at the Chelsea Porcelain Manufactory in England between 1758 and 1769.



CW2453 *Large Platter (14" x 11")*

CW2455 *Oval Dish (11½" x 9")*

CW2445 *Leaf Dish (12" l.)*

CW2446 *Leaf Dish (12" l.)*

CW2444 *Trumpet Vase (11" l.)*

CW2443 *Trumpet Vase (11" l.)*

CW2441 *Shell Dish (8¼" dia.)*

CW2442 *Shell Dish (8¼" dia.)*

CW2447 *Pitcher (9" h.)*

*(Colonial Williamsburg adaptation)*



# Mottahedeh



## PROSPERITY

George Washington had a deep affinity for stoneware and creamware and used it extensively at Mount Vernon. Salt-glazed fragments excavated from the grounds of Mount Vernon were replicated in great detail for this pattern. Salt glazed stoneware predates creamware and was popular by 1765. Guaranteed stainproof and is microwave and dishwasher safe.

- MV1600 Five Piece Place Setting
- MV1601 Dinner Plate (10¼" dia.)
- MV1602 Dessert Plates, set of 4 (8½" dia.)
- MV1603 Bread and Butter Plate (7" dia.)
- MV1604 Mug (3½" dia.) MV1604B Saucer
- MV1605 Rim Soup Plate (9¼" dia.)

George Washington's  
MOUNT VERNON



# Mottahedeh



## PROSPERITY

*MV1607 Salad Bowl, Large (9¾" dia.)*

*MV1608 Salad Bowl, Small (8½" dia.)*

*MV1612 Pot de Creme, Set of 4 (3¾" h.)*

*MV1610 Oval Platter (14½" l.)*

*MV1609 Service Plate (12½" dia.)*

*MV1606 Tureen*

*MV1610 Oval Platter (14½" l.)*



George Washington's  
MOUNT VERNON

# Mottahedeh



## CHINOISE BLUE

This pattern is derived from 18th century Chinese Export porcelain. The elegant leaf and ribbon borders in gold, cobalt and rust create a subtle yet striking effect. This service is equally appropriate in a board room, a formal dinner setting or for a quiet evening at home.

- S1513 Round Bowl (8½" dia.)
- S1527 Oval Platter (14" L)

- S1520 Five Piece Place Setting
- S1521 Dinner Plate (10" dia.)
- S1522 Dessert Plate (8¼" dia.)
- S1523 Bread and Butter Plate (7" dia.)
- S1524 Can Cup and Saucer (Cup 2¼" h.)
- S1526 Demitasse Cup and Saucer (Cup 2" h.)
- S1512 Candlesticks, pair (6¾" h.)
- S1515 Large Cachepot (7½" h.)
- S1525 Rim Soup Plate (not shown)
- S1506 Large Dinner Plate (10¾" dia.) (not shown)

- S1507 Octagonal Tureen and Stand (Tureen 12½" L)
- S1507P Octagonal Platter (15" L)



# Mottahedeh



## CHINOISE BLUE

- S1531 Coffeepot (48oz., 9" h.)
- S1532 Teapot (40oz., 6½" h.)
- S1533 Sugar Bowl (4¼" h.)
- S1534 Creamer (3½" h.)
  
- S1528 Small Square Bowl (6½" sq.)
- S1529 Large Square Bowl (9" sq.)
  
- S1535 Monteith Cachepot (10½" L., 6" h.)
  
- S1540 Mug (4¼" h.)



# Mottahedeh



## CHINOISE BLUE

These delicate drawings are reproduced from 18th century patterns by Harolddt, the Master which originally served as an inspiration to Meissen painters for the elaborate decorations they painstakingly hand colored on porcelain.

S1514 Small Cachepot (6¼" h., 6¼" dia.)

S1510 Large Ginger Jar (15" h., 9" dia.)

S1515 Large Cachepot (7½" h., 7" dia.)

S1517 Large Square Tray (6¾" h., 6¾" w.)

S1516 Small Square Tray (5" h., 5" w.)

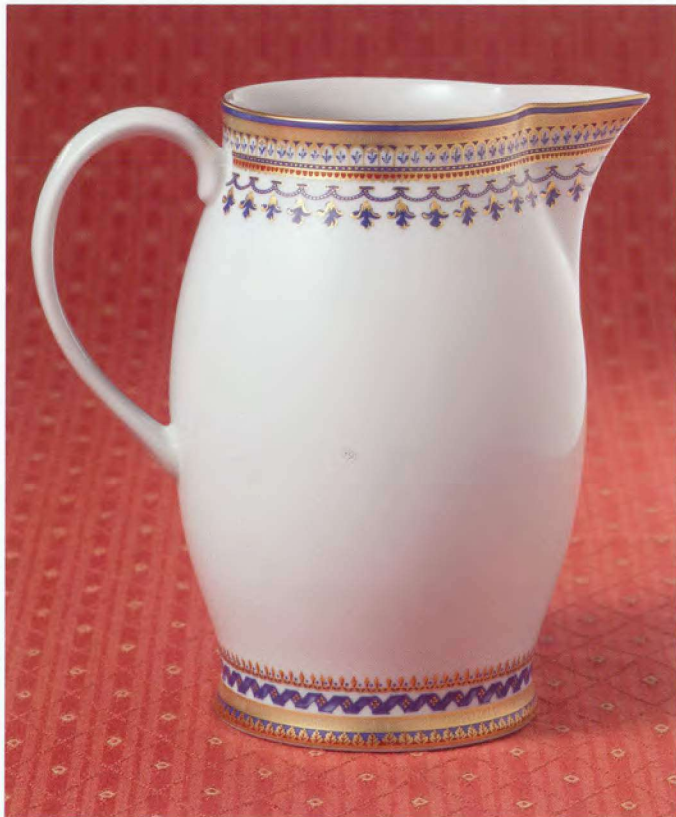
S1511 Trumpet Vase (11¼" h.) *as a Lamp*



# Mottahedeh

## CHINOISE BLUE

- S1546 Crescent Salad Plate
- S1508 Gravy Boat and Stand (7" l.)
- S1505 Oval Tray (same as stand without well)
- S1547 Cake Plate
- S1536 Pitcher (7¼" h.)
- S1509 Chop Plate (13" dia.)



# Mottahedeh



## CHINOISE BLUE

- S1531 Coffeepot (48 oz., 9" h.)
- S1532 Teapot (40 oz., 6½" h.)
- S1533 Sugar Bowl (4¾" h.)
- S1534 Creamer (3½" h.)

- S1528 Small Square Bowl (6½" x 6 ½")
- S1529 Large Square Bowl (9" x 9")

- S1535 Monteith Cachepot (10½" L, x 6" h.)



# Mottahedeh



## GOLDEN BUTTERFLY

The original of this distinguished dinner service was made in China for the East India Company during the reign of the Qianlong Emperor (1736-1795). Glowing against a starry sky of cobalt blue are golden butterflies signifying happiness. What more auspicious setting for a happy meal!

- M27 *Five Piece Place Setting*
- M29 *Dinner Plate (10" dia.)*
- M29C *Dessert Plate (8½" dia.)*
- M29B *Bread and Butter (7" dia.)*
- M30 *Cup and Saucer*

# Mottahedeh



## GOLDEN BUTTERFLY

- M34 Sugar (5" h.)
- M35 Creamer (3¼" h.)
- M32 Coffeepot (9" h.)
- M33 Teapot (6" h.)
  
- M36A Square Bowl (10" dia.)
- M36 Round Bowl (9½" dia.)
  
- M31B Tureen only (4 qt.)
- M31A Platter (16⅝" w.)
- M29A Rim Soup Plate (10" dia.)
- M37 Master Salt (4" w.)



# Mottahedeh



## PALMA

Palma is an exact reproduction of a design, circa 1840, by Fedor Solntsev, the great European art historian who painted interiors for cathedrals and designed much of the Kremlin under the patronage of Tsar Nicolas I. The original Solntsev design incorporates the elements of a plate owned by Tsar Alexei Mikailovich, existing in 1667, inspired by the domes of magnificent mosques in Constantinople. The center of the plate is reminiscent of Celtic patterns. Truly universal in its theme, this historic pattern is a mark of excellent design. Available as a five piece place setting and presentation plate all featuring three different golds, rich navy, green, magenta and a touch of ruby.

- S600 *Five Piece Place Setting*
- S601 *Dinner Plate (10¼" dia.)*
- S602 *Dessert Plate (8½" dia.)*
- S602A *Simple Dessert Plate (8½" dia.)*
- S603 *Bread and Butter Plate (7" dia.)*
- S604 *Tea Cup and Saucer (3½" dia.)*



# Mottahedeh



## PALMA

- S609 *Palma Wave Service Plate (12" dia.)*
- S603A *Palma Wave Bread and Butter Plate (7" dia.)*
- S610 *Palma Service Plate (12" dia.)*
- S611 *Crescent Salad Plate (8¼" l. x 4¼" w.)*



# Mottahedeh



## BLUE SHÒU

Inspired by design elements in our iconic Blue Canton pattern, these elements have been merged onto sleek modern shapes. The word Shòu (pronounced “show”) is the Chinese word for longevity. The evergreen pine tree appears as a key design element throughout, symbolizing endurance and long life, as it endures the long winter. Blue Shòu is produced in classic cobalt on bright white high fired porcelain. This will surely become a classic in its own right.

- S100 *Five Piece Place Setting*
- S101 *Dinner Plate (11" dia.)*
- S102 *Dessert Plate (9" dia.)*
- S103 *Bread and Butter Plate (6½" dia.)*
- S104 *Tea Cup and Saucer (4" dia.)*
- S115 *Platter, Large (16½" l.)*
- S114 *Platter, Small (13¾" l.)*



# Mottahedeh



## BLUE SHÒU

- S108 *Mug (4½" h.)*
- S110 *Demitasse Cup and Saucer (3½" h.)*
- S104 *Tea Cup and Saucer (4" dia.)*
- S109 *Breakfast Cup and Saucer (5" dia.)*
- S105 *Cereal Bowl (5½" dia.)*
  
- S112 *Serving Bowl, Large (11¾" dia.)*
- S111 *Serving Bowl, Small (8¾" dia.)*
  
- S107 *Service Plate (12¾" dia.)*
- S106 *Rim Soup Plate (10" dia.)*
- S113 *Pasta Bowl (11" dia.)*



# Mottahedeh



## VIRGINIA BLUE

Inspired by a Chinese export plate in Colonial Williamsburg's collection, in its day this pattern was called "china of the most fashionable sort" by Robert Beverly. Similar wares were in use on a Tidewater Virginia plantation at the time of the American Revolution. This version is refreshed with a pearlized ecru background and the original cobalt blue has been updated to brilliant periwinkle blue, giving a lacy and gentle effect. Microwave and dishwasher safe.

- CW3600 *Five Piece Place Setting*
- CW3601 *Dinner Plate (10¼" dia.)*
- CW3602 *Dessert Plate (7½" dia.)*
- CW3603 *Bread and Butter Plate, plain center (7" dia.)*
- CW3603A *Bread and Butter Plate, design center (7" dia.)*
- CW3604 *Tea Cup and Saucer*



# Mottahedeh



## VIRGINIA BLUE

- CW3606 Coupe Soup (7½" dia.)
- CW3609 Oval Platter (15" L, 11¼" w.)
- CW3608 Oval Serving Dish (11½" L, 8" w.)
- CW3631 Mug (4¼" h.)
- CW3607 Salad Bowl (8¾" dia.)



# Mottahedeh



## GREEN LACE

- S1550 *Five Piece Place Setting*
- S1551 *Dinner Plate (10 ¼" dia)*
- S1552 *Dessert Plate (8 ½" dia)*
- S1553 *Bread and Butter Plate (7" dia)*
- S1554 *Teacup and Saucer (2 ¾" h.)*



## LACE SERVICE PLATES

- S1705B *Cobalt Blue Lace Service Plate (12" dia)*
- S1705GL *Gold Lace Service Plate (12" dia)*
- S1705BR *Chocolate Lace Service Plate (12" dia)*
- S1705G *Green Lace Service Plate (12" dia)*
- S1705CF *Cornflower Lace Service Plate (12" dia)*
  
- S1705GA *Apple Green lace Service Plate (12" dia)*
- S1705P *Plum Lace Service Plate (12" dia)*
- S1705BK *Black Lace Service Plate (12" dia)*
- S1705R *Red Lace Service Plate (12" dia)*
- S1705T *Turquoise Lace Service Plate (12" dia)*



# Mottahedeh



## APPLE GREEN LACE

## CORNFLOWER LACE

The very successful Blue Lace pattern has been interpreted once again for 5 piece place settings in Green Apple and Cornflower Blue. Like Blue Lace these colorways can be mixed and matched with more decorative patterns. The delicate border was inspired by Ch'ing Dynasty (1644 - 1911) porcelain from China and is highlighted by bands of 22 karat gold.

- S1350 *Apple Five Piece Place Setting*
- S1351 *Apple Dinner Plate (10 1/4" dia)*
- S1352 *Apple Dessert Plate (8 1/2" dia)*
- S1352A *Dessert Plate with Butterfly Center*
- S1353 *Apple Bread & Butter Plate (7" dia)*
- S1354 *Apple Cup & Saucer (2 3/4" h.)*



- S1450 *Cornflower Five Piece Place Setting*
- S1451 *Cornflower Dinner Plate (10 1/4" dia)*
- S1452 *Cornflower Dessert Plate (8 1/2" dia)*
- S1452A *Dessert Plate with Butterfly Center*
- S1453 *Cornflower Bread & Butter Plate (7" dia)*
- S1454 *Cornflower Cup & Saucer (2 3/4" h.)*



# Mottahedeh



## BUTTERFLY LACE DESSERT PLATES

The butterfly motif, an original design, has been rendered to include the entire rainbow of colors, making this plate a lovely compliment to a broad range of patterns and colors. Choose the Gold Teardrop border or mix and match with the pastel shades of Apple Green, Cornflower and Green Lace. Banding is hand painted in gold.

- |          |   |            |
|----------|---|------------|
| S1252A   | Golden Teardrop Butterfly Dessert Plate                     | (8½" dia.) |
| S1252AGB | Golden Teardrop Butterfly Dessert Plate, Boxed Set of Four  |            |
| S1352A   | Apple Green Lace Butterfly Dessert Plate                    | (8½" dia.) |
| S1352AGB | Apple Green Lace Butterfly Dessert Plate, Boxed Set of Four |            |
| S1452A   | Cornflower Lace Butterfly Dessert Plate                     | (8½" dia.) |
| S1452AGB | Cornflower Lace Butterfly Dessert Plate, Boxed Set of Four  |            |
| S1552A   | Green Lace Butterfly Dessert Plate                          | (8½" dia.) |
| S1552AGB | Green Lace Butterfly Dessert Plate, Boxed Set of Four       |            |
| S1252ALB | Assorted, (one each of above) Boxed Set of Four             |            |



Dessert plates are available gift boxed as sets of four and tied with a satin ribbon.

## LACE MUGS

Microwave, dishwasher and oven safe.

- |       |                               |       |                              |
|-------|-------------------------------|-------|------------------------------|
| S1657 | Cobalt Blue Lace Mug (4¼" h.) | S1457 | Cornflower Lace Mug (4¼" h.) |
| S1357 | Apple Green Lace Mug (4¼" h.) | S1557 | Green Lace Mug (4¼" h.)      |



# Mottahedeh



## CORNFLOWER LACE

S1456	Cornflower Lace Rim Soup Plate	9"
S1457	Cornflower Lace Mug	4.25"
S1458	Cornflower Lace Dessert Bowl	4.75"
S1461	Cornflower Lace Round Bowl	9"
S1476	Cornflower Lace Oval Platter	15"
S1477	Cornflower Lace Medium 12 Sided Tray	6.5" x 8.25"
S1478	Cornflower Lace Large 12 Sided Tray	9.25" x 11.5"



## APPLE GREEN LACE

S1356	Apple Green Lace Rim Soup Plate	9"
S1357	Apple Green Lace Mug	4.25"
S1358	Apple Green Lace Dessert Bowl	4.75"
S1361	Apple Green Lace Round Bowl	9"
S1376	Apple Green Lace Oval Platter	15"
S1377	Apple Green Lace Medium Fluted Tray	6.5" x 8.25"
S1378	Apple Green Lace Large Fluted Tray	9.25" x 11.5" x 8.5"



## GREEN LACE

S1556	Green Lace Rim Soup Plate	9"
S1557	Green Lace Mug	4.25"
S1558	Green Lace Dessert Bowl	4.75"
S1561	Green Lace Round Bowl	9"
S1576	Green Lace Oval Platter	15"
S1577	Green Lace Medium Fluted Tray	6.5" x 8.25"
S1578	Green Lace Large 12 Sided Tray 9.25	9.25" x 11.5"

# Mottahedeh



## PINK LACE

- S1250 5 Piece Place Setting
- S1251 Dinner Plate (10 1/4" dia.)
- S1252 Dessert Plate (8 1/2" dia.)
- S1253 Bread & Butter Plate (7" dia.)
  
- S1256 Rim Soup (9" dia.)
- S1257 Mug (4 1/4" h.)
- S1261 Round Bowl (9" dia.)
- S1276 Oval Platter (15" l.)



# Mottahedeh



## LACE TEA FOR TWO

The perfect gift for a newly wed couple or you and your significant other. The cups, saucers, teapot and a teabag holder stack up to be stowed in a cabinet or displayed on a sideboard. The gift box is perfect for shipping, as it has been designed to cradle the teaset and also may be displayed. Available in four colors.

- S1379 *Apple Green Lace Tea for Two Boxed Set*
- S1479 *Cornflower Lace Tea for Two Boxed Set*
- S1579 *Green Lace Tea for Two Boxed Set*
- S1679 *Cobalt Blue Lace Tea for Two Boxed Set*



# Mottahedeh



## PEACOCK

From early Christian times the peacock has symbolized immortality. It has long been associated with royalty. The luxuriant feathers painted in cobalt, green, gold and russet flow on a surface of shimmering watercolors.

- S2700 *Peacock Four Piece Place Setting*
- S2701 *Dinner Plate (10 3/4" dia.)*
- S2702 *Dessert Plates, set of 4 (8 1/2" dia.)*
- S2703 *Bread and Butter Plate (6 3/4" dia.)*
- S2731 *Mug (4 1/4" h.)*

## LACE COUP CUPS & SAUCERS

- S1379CS *Apple Green (4" dia.)*
- S1479CS *Green (4" dia.)*
- S1579CS *Cornflower (4" dia.)*
- S1679CS *Blue (4" dia.)*

## LACE DESSERT BOWLS

- S1258 *Pink (4 1/2" dia.)*
- S1358 *Apple Green (4 1/2" dia.)*
- S1458 *Green (4 1/2" dia.)*
- S1558 *Cornflower (4 1/2" dia.)*
- S1658 *Blue (4 1/2" dia.)*



# Mottahedeh



## CHELSEA FEATHER GOLD

Chelsea Feather with its delicate gold feathering and scalloped shoulder harks back to the Chelsea Manufactory of London circa the late 1700s. Bright white porcelain edged in 22K gold.

- S5000 *Four Piece Place Setting*
- S5001 *Dinner Plate (10" dia.)*
- S5002 *Dessert Plates, set of 4 (8½" dia.)*
- S5003 *Bread and Butter Plate (6¾" dia.)*
- S5008 *Mug (4 1/4" h.)*

## GOLD LATTICE

- S5101 *Dinner Plate (10" dia.)*

## GOLD ARROWHEAD

- S5201 *Dinner Plate (10" dia.)*



# Mottahedeh



## EMMELINE

Emmeline is a blend of modern and old world design. The blue and white floral motifs were reproduced from Chinese Export porcelain circa 1755, a new look for the factories. Drawing books were sent to China to instruct artists in European decoration to accommodate the changing tastes of the West. One French merchant wrote "Send no more dragons, but let us have flowers instead". Emmeline combines a new modern white plate with eighteenth century floral motifs. Microwave and Dishwasher safe.

S3000 *Five Piece Place Setting*  
S3001 *Dinner Plate (10 1/4" d.)*  
S3002 *Desert Plate (8 1/2" d.)*

S3003 *Bread & Butter Plate (7")*  
S3004 *Tea cup & Saucer (2 3/4" h.)*

# Mottahedeh



- S3037 Large Platter (15" l.)
- S3056 Rim Soup Plate (9" dia.)
- S3058 Dessert Bowl (4 1/4" dia.)
- S3031 Mug (4 1/4" h.)



# Mottahedeh



## INDIGO WAVE

Merchant sailors from the *Companie Des Indes* (East India Company) dominated trade with the Orient in the 17th and 18th centuries. Their sailing ships carried cargo from the fabled East including rare porcelains sought after by kings and connoisseurs in Europe. One such piece, an exquisite porcelain plate made for a Portuguese noble, inspired our Indigo Wave. Enriched with 22k gold, the design in deep cobalt blue is typical of the most prized of Chinese export porcelains.

- S900 *Five Piece Place Setting*
- S901 *Dinner Plate (10¼" dia.)*
- S902 *Dessert Plate (8½" dia.)*
- S903 *Bread and Butter Plate (6¾" dia.)*
- S904 *Tea Cup and Saucer (3¾" dia.)*
- S905 *Rim Soup Plate (9" dia.)*

# Mottahedeh



## INDIGO WAVE

- S906E Platter with Eagle (13 $\frac{3}{4}$ " L)
- S906 Platter (13 $\frac{3}{4}$ " L)



- S910E Square Canape Plate with Eagle (8" x 8")
- S910 Square Canape (8" x 8")
- S907 Large Square Bowl (9" x 9")
- S908 Small Square Bowl (6 $\frac{1}{2}$ " x 6 $\frac{1}{2}$ " )
- S909 Gravy Boat and Stand (7" L)

# Mottahedeh



## INDIGO WAVE

S912 Octagonal Tureen (12½" L) and Platter (15" L)

S913 Covered Vegetable (12½" x 8" x 6½" h.)

S912P Platter (15" L)

S914 Chop Plate (13" dia.)

S911E Mug with Eagle (4¼" h.)

S915 Demitasse Cup and Saucer (2½" h.)

S911 Mug (4¼" h.)



# Mottahedeh



## SYLVANAE

Sylvanae is the Latin word for Goddesses of the Forest. An apt name for this beguiling woodland scene, an adaptation of a Zsolnay Manufacture design produced in the late 1800's in Pecs Hungary. This swirling natural motif features exotic birds, and many colored flora intertwined with foliage, all on generously sized porcelain plates. Mix this with Mottahedeh's Lace patterned accessories in colors of Cornflower, Cobalt, Green, Apple and Pink for a stunningly beautiful table or buffet. Alternatively, place the vibrant dessert plate on a simple border white or colored plate for a very colorful effect.

- S3100 *Five Piece Place Setting*
- S3101 *Dinner Plate (11" dia.)*
- S3102 *Dessert Plates, set of 4 (9" dia.)*
- S3103 *Bread and Butter Plate (6½" dia.)*
- S3104 *Teacup and Saucer (4" dia.)*

# Mottahedeh



## BARGELLO

This charming pattern has a contemporary vibrancy and versatility that belies its antique origins. The Bargello dinnerware by Mottahedeh is adapted from English porcelain, circa 1810. Like the needlework for which it is named, it combines random dashes of red, green, blue, yellow, orange and magenta in a geometric patchwork enhanced by 22 carat gold lines. It is reminiscent of contemporary Ikat, Indonesian, style designs.

S4101 Dinner Plate (10 1/2" dia.)

S4102 Dessert Plate (8 1/2" dia.)

# Mottahedeh



TONY  
DUQUETTE

## STARBURST MEDALLION

Tony Duquette, an American design icon, was known for his lavish Metro Goldwyn Mayer sets and costume designs. He later became the Beverly Hills interior designer to many Hollywood celebrities. The Starburst Medallion is our rendering of dinnerware designs conceived on paper as faceted stone plates by Duquette (see the Service Plates, next page).



Malachite

- TD700 Malachite Four Piece Place Setting
- TD701 Malachite Dinner Plate (10" dia.)
- TD702 Malachite Dessert Plate (8" dia.)
- TD704 Malachite Cup and Saucer (cup 3¼" dia.)



Lapis

- TD900 Lapis Four Piece Place Setting
- TD901 Lapis Dinner Plate (10" dia.)
- TD902 Lapis Dessert Plate (8" dia.)
- TD904 Lapis Cup and Saucer (cup 3¼" dia.)



Red Tortoise

- TD800 Red Tortoise Four Piece Place Setting
- TD801 Red Tortoise Dinner Plate (10" dia.)
- TD802 Red Tortoise Dessert Plate (8" dia.)
- TD804 Red Tortoise Cup and Saucer (cup 3¼" dia.)

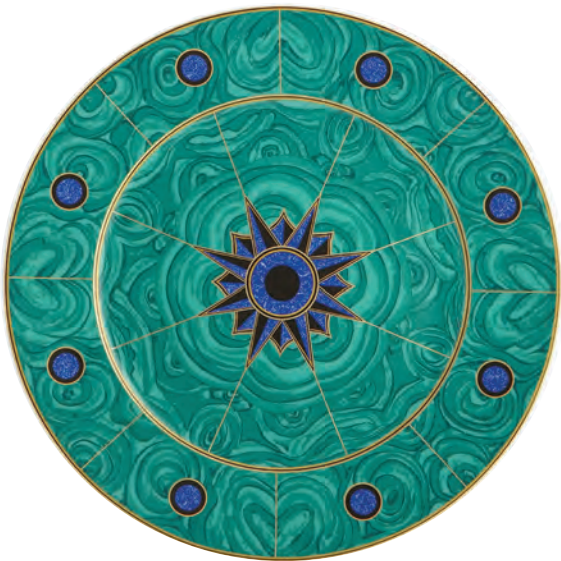
# Mottahedeh



TONY  
DUQUETTE

## STARBURST MEDALLION

Tony Duquette, an American design icon of Beverly Hills, sketched these service plates as one of his many tableware ideas. The faux painting is whimsical, but the fine geometric gold lines give the design a serious and powerful edge.



TD201 *Malachite Service Plate* (12" dia.)

TD203 *Lapis Service Plate* (12" dia.)

TD202 *Red Tortoise Service Plate* (12" dia.)



*Malachite*



*Lapis*



*Red Tortoise*

TD210 *Malachite Canape Plate*  
(5½" dia.)

TD212 *Lapis Canape Plate*  
(5½" dia.)

TD211 *Red Tortoise Canape Plate*  
(5½" dia.)

# Mottahedeh



## BARRIERA CORALLINA

This special pattern features ten-faceted plates with a necklace of raised and hand painted coral on the shoulder. The design was taken from Tony Duquette's sketch book where he designed many pieces of a coral dinner service, all with a watery theme. The generous cup features a coral handle and coral encircled foot. All items are painted to order.

- TD100 *Barriera Corallina Red Five Piece Place Setting*
- TD101 *Barriera Corallina Red Dinner Plate* (11¼" dia.)
- TD102 *Barriera Corallina Red Dessert Plate* (8¾" dia.)
- TD103 *Barriera Corallina Red Bread and Butter Plate* (7" dia.)
- TD104 *Barriera Corallina Red Cup and Saucer* (Cup 4" dia.)
- TD110 *Barriera Corallina Red Octagonal Platter, Large* (15" l. x 12" w.)



## ECLIPSE

These magnificent service plates frame the dinner service beautifully.

- S1011 *Eclipse Service Plate Red* (13" dia.)
- S1012 *Eclipse Service Plate Black* (13" dia.)

# Mottahedeh



## BARRIERA CORALLINA

Barriera Corallina in red may also be ordered in 22 carat gold or true platinum. Each plate is hand painted for a sparkling effect. Special order.



TONY  
DUQUETTE



### GOLD

- TD500 *Barriera Corallina Gold Five Piece Place Setting*
- TD501 *Barriera Corallina Gold Dinner Plate* (11¼" dia.)
- TD502 *Barriera Corallina Gold Dessert Plate* (8¾" dia.)
- TD503 *Barriera Corallina Gold Bread and Butter Plate* (7" dia.)
- TD504 *Barriera Corallina Gold Cup and Saucer* (Cup 4" dia.)
- TD510 *Barriera Corallina Gold Octagonal Platter, Large* (15" l. x 12" w.)



### PLATINUM

- TD600 *Barriera Corallina Platinum Five Piece Place Setting*
- TD601 *Barriera Corallina Platinum Dinner Plate* (11¼" dia.)
- TD602 *Barriera Corallina Platinum Dessert Plate* (8¾" dia.)
- TD603 *Barriera Corallina Platinum Bread and Butter Plate* (7" dia.)
- TD604 *Barriera Corallina Platinum Cup and Saucer* (Cup 4" dia.)
- TD610 *Barriera Corallina Platinum Octagonal Platter, Large* (15" l. x 12" w.)

# Mottahedeh



## SERVICE PLATES

S107 Blue Shòu (12¾" dia.)

S1622 Blue Canton Contempo (12¾" dia.)

S2379 Tobacco Leaf Contempo (12¾" dia.)

S1749 Blue Dragon (12" dia.)

S1726 Famille Verte Contempo (12¾" dia.)

S2378 Tobacco Leaf (12¼" dia.)

S945 Indigo Wave (12½" dia.)

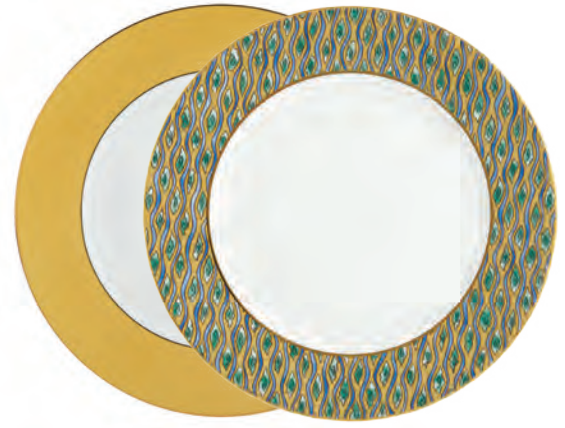


S1706B Blue Labyrinth (12" dia.)

S1706G Gold Labyrinth (12" dia.)

S610 Palma (12" dia.)

S609 Palma Wave (12" dia.)



# Mottahedeh

## SERVICE PLATES



MV1609 Prosperity (13" dia.)

S1545 Chinoise Blue (12¼" dia.)

S4032 Longton Hall (13" dia.)

S2011 Red Festival (12" dia.)

S2012 Green Festival (12" dia.)

S2013 Blue Festival (12" dia.)

S2014 Black Festival (12" dia.)

S2017 Cinnabar Festival (12" dia.)



S1705B Cobalt Blue (12" dia.)

S1705GL Gold (12" dia.)

S1705BR Chocolate (12" dia.)

S1705G Green (12" dia.)

S1705CF Cornflower (12" dia.)



S1705GA Apple Green (12" dia.)

S1705P Plum (12" dia.)

S1705BK Black (12" dia.)

S1705R Red (12" dia.)

S1705T Turquoise (12" dia.)

## LACE SERVICE PLATES

# Mottahedeh



## LEAF

We did our homework and looked into some of the most prized glazes of early Korean and Chinese periods to express the classics. The soft impression of a filigree leaf is seen on each plate. It is enhanced by a silken glaze that has an ombre effect, moving from dark to light at the edges. This is a mark of excellence in glazing. Leaf is created in four color ways, White Silk, Blue Haze, Topaz and Agate. The plates, bowls and mugs are thin, yet durable. Leaf tableware lives well between casual and more formal occasions. Leaf patterned tableware is dishwasher and microwave safe. Choose one color or mix them for an intriguing table.

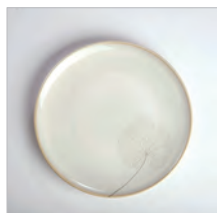


# Mottahedeh

## WHITE SILK



MS1001 Dinner Plate (10 1/2" dia.)



MS1002 Dessert Plate (9 1/2" dia.)



MS1004 Mug (4 1/4" h.)



MS1006 Pasta Bowl (10" dia.)



MS1007 Cereal Bowl (6 1/4" dia.)



MS1008 Fruit Bowl (4 3/4" dia.)



MS1009 Serving Bowl (10 1/2" dia.)

## BLUE HAZE



MS2001 Dinner Plate (10 1/2" dia.)



MS2002 Dessert Plate (9 1/2" dia.)



MS2004 Mug (4 1/4" h.)



MS2006 Pasta Bowl (10" dia.)



MS2007 Cereal Bowl (6 1/4" dia.)



MS2008 Fruit Bowl (4 3/4" dia.)



MS2009 Serving Bowl (10 1/2" dia.)

## TOPAZ



MS3001 Dinner Plate (10 1/2" dia.)



MS3002 Dessert Plate (9 1/2" dia.)



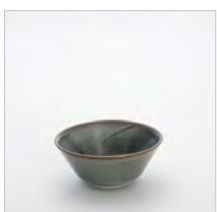
MS3004 Mug (4 1/4" h.)



MS3006 Pasta Bowl (10" dia.)



MS3007 Cereal Bowl (6 1/4" dia.)



MS3008 Fruit Bowl (4 3/4" dia.)



MS3009 Serving Bowl (10 1/2" dia.)

## AGATE



MS4001 Dinner Plate (10 1/2" dia.)



MS4002 Dessert Plate (9 1/2" dia.)



MS4004 Mug (4 1/4" h.)



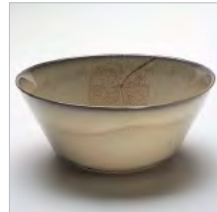
MS4006 Pasta Bowl (10" dia.)



MS4007 Cereal Bowl (6 1/4" dia.)



MS4008 Fruit Bowl (4 3/4" dia.)



MS4009 Serving Bowl (10 1/2" dia.)

# Mottahedeh



## TIN PLATE PICNIC SETS



These tin plate picnic sets will add style to any outdoor gathering. Use them without worrying about leaks or bending. Pack them back up into their tin box for easy clean up at home. All set include four tin plates (except for the American ships which is a set of six) and come packed in a reusable tin box.

- T7200 Turkish Garden set of 4 (10 1/4" dia.)  
other sets pictured on next page
- T5200 Turkish Garden set of 4 (10 1/4" dia.)
- T1640 Ming set of 4 (10 1/4" dia.)
- T1981 American Ships set of 6 (10 1/4" dia.)
- T5200 Lowestoft Rose set of 4 (10 1/4" dia.)
- T6200 Blue Dragon set of 4 (10 1/4" dia.)
- T8200 Lotus Blossom set of 4 (10 1/4" dia.)
- T9200 Blue Pagoda set of 4 (10 1/4" dia.)

# Mottahedeh



T1640 Ming set of 4 (10 1/4" dia.)



T1981 American Ships set of 6 (10 1/4" dia.)



T5200 Lowestoft Rose set of 4 (10 1/4" dia.)



T6200 Blue Dragon set of 4 (10 1/4" dia.)



T8200 Lotus Blossom set of 4 (10 1/4" dia.)



T9200 Blue Pagoda set of 4 (10 1/4" dia.)

# *Mottahedeh*



Giftware

# Mottahedeh



This extraordinary bowl is a reproduction of a Chinese export piece circa 1800 in the collection of the Winterthur Museum. The decoration on this bowl depicts the thirteen "Hong" merchants representing thirteen foreign countries (one being the United States) who handled official trade between China and the West in the late 18th century. Located on the Pearl River in Canton, these factories, or "Hong", served Western traders as warehouses, offices and residences. This trading system was established in 1757 by the Manchu Dynasty to eliminate contact between the Chinese people and "foreign devils."

W8490 Hong Bowl with Stand (11¼" dia., 6½"h.)

WINTERTHUR



Famille Rose was a style of Chinese porcelain that featured fabulous pinks, rust, greens and blues. This large punch bowl is derived from an export dinner service made in 1775. It depicts cascading flowers and elegant gold scrollwork. It is a magnificent piece for a large table, a sideboard or for presentation.

S1724 Famille Rose Bowl (14¾" dia., 6¼"h.)

Inside Center of Bowl



Reproduced from a Chinese Export porcelain punchbowl, circa 1760 - 1775. The original is located in the Bassett Hall house, formerly a Rockefeller residence at Colonial Williamsburg.

CW6000 Bassett Hall Bowl (14½" dia., 6"h.)

Inside Center of Bowl



# Mottahedeh



## CHINESE EXPORT



- S2991 Butterfly Small Platter (10½"L)
  - S2993 Butterfly Shell Dish (8"x8")
  - S2990 Mallard Shell Dish (8"x8")
  - S2982 Eagle Small Platter (10½"L)
  - S2997 Eagle Shell Dish (8"x8")
- 52984



## CH' IEN LUNG BOWL

S1720 Ch'ien Lung Bowl (13" dia.)



*Disc*  
S4164 Majolica Fan Bowl (12¼" dia., 7" h.)



HC240 Bamboo Open Vase (8¾" h.)  
HC241 Bamboo Covered Jar (10" h.)

# Mottahedeh



## WUFU BOWL

The Peach Bowl is an exact reproduction from China's Yongzheng period (1723-35) which incorporates pink and opaque white enamels. The bowl features eight peaches which are symbolic of longevity and five bats which represent the traditional blessings of wealth, health, love of virtue, old age, and a natural death.

S1731 WUFU Peach Bowl (13" dia.)



## LOWESTOFT GARDEN

This updated version of our once popular and lavish design, called Lowestoft Rose, shows delicate flowers and engraved 22 carat gold borders. Perfect for a special dessert. May be gift boxed.

S2472 Lowestoft Garden Dessert Plate Set of Four (8½" dia.)  
 S2474 Lowestoft Garden Cup and Saucer Set of Four (Cup 2¾" dia.)  
 S2472A Lowestoft Garden Dessert Plate (8½" dia.)  
 S2474CS Lowestoft Garden Cup and Saucer (Cup 2¾" dia.)



## PROSPERITY TUREEN

A fine adaptation of President George Washington's personal soup tureen. The style is English Staffordshire, the details and scale are authentic. The original was stoneware but ours is made of hard French porcelain. Heat resistant, dishwasher safe and guaranteed stain proof. Licensed by Mount Vernon Ladies Society.

MV1606 Prosperity Tureen (9½" h. x 10¼" w. x 13½" l.)  
 MV1610 Prosperity Oval Platter (14½" dia.)

# Mottahedeh



## BLUE CANTON

### CONTEMPO SERVICE PLATE

One of our oldest and most loved patterns finds new life in this modern adaptation.

S1622 *Blue Canton Contempo* (13" dia.)

### SHANG MUG

HC148 *Blue Canton Shang Mug* (4" h.)

### ROUND AND SQUARE BOXES

HC198 *Blue Canton Square Box* (3¾" dia.)

HC197 *Blue Canton Round Box* (3¾" dia.)



## TOBACCO LEAF

### CONTEMPO SERVICE PLATE

Tobacco Leaf is a design whose style has been represented at least eleven different ways. Produced in 18th Century China, it is a profusion of 27 colors and high fire cobalt with gold. This updated version is bold. Our design is the most recognized Tobacco Leaf style today.

S2379 *Tobacco Leaf Contempo* (13" dia.)



## ALHAMBRA CANAPE PLATES

This intricate calligraphic design was inspired by a small antique plate that evokes the Moorish style of Alhambra. The playful line work balances nicely with the rich nature backgrounds of Burling Walnut, Curly Pine, Sandstone and Oriental Blue. These petite plates are perfect stacked out at parties for appetizers, your favorite cookie or even as a coaster for your cocktail.

S8000 *Alhambra Canape Plates Assorted Set of Four* (5½" dia.)

S8001S *Alhambra Canape Plates Burling Walnut Set of Four* (5½" dia.)

S8002S *Alhambra Canape Plates Curly Pine Set of Four* (5½" dia.)

S8003S *Alhambra Canape Plates Sandstone Set of Four* (5½" dia.)

S8004S *Alhambra Canape Plates Oriental Blue Set of Four* (5½" dia.)

*Also sold individually, use item# without S.*

# Mottahedeh



NT2419 *Punch Bowl (15½" dia.), from the Historic Natchez Collection Adapted from a Chinese bowl, circa 1795, at Cliveden, a property of the National Trust for Historic Preservation.*

S2974 *Blue and Gold Monteith Planter (14¾" dia., 10½"h.) Adapted from a Chinese porcelain monteith, circa 1720.*

S8450 *Blue and White Covered Meat Platter (15½" x 12" x 9") Adapted from a Chinese Export covered platter, circa 1740*  
 S8450P *Blue and White Platter only*

Y8400 *Blue and White Monteith Bowl (12¾" dia., 6½"h.) Reproduction of a Metropolitan Museum of Art original.*



# Mottahedeh



Y2955 Phoenix Bowl (9¼" dia.) *DSC*  
 Reproduction of a Metropolitan Museum of Art original

S2300 Small Phoenix Tray (7½"L) *DSC*

Y1625 Blue and White Square Bowl (8½" sq.)  
 Reproduction of a Metropolitan Museum of Art original

W4101 Blue and White Worcester Bowl (10½" dia.) *DSC*  
 Reproduction of a Winterthur original

U6535 Large Chatsworth Tulipiere (40" h.)  
 U6538 Small Chatsworth Tulipiere (22½" h.)  
 Reproduction of Stately Homes originals



W4003 Mustard Pot (3½" h.) Reproduction of a Winterthur original

Y1628 Blossom Plate (9" dia.) Reproduction of a Metropolitan Museum of Art original

S1630 Blossom Cereal Bowl (7¼" dia.)

*DSC*



Y1627 Blue and White Cachepot (8½" dia., 6"h.)  
 Reproduction of a Metropolitan Museum of Art original

# Mottahedeh



## AMERICAN SHIPS

The National Maritime Museum, Greenwich, England and Mottahedeh commemorate six early U.S. vessels: the frigates *Chesapeake* and *Constitution*, the clipper ships *Flying Cloud* and *Nightingale*, the first-class packet ship *Yorkshire of New York* and the auxilliary packet ship *Massachusetts*. Each ship is identified on the back of the plates, mugs and oval trays. Other pieces portray the *Constitution*.



- S1830 Constitution Oval Tray (7" L)
- S1835 Constitution Pitcher (7½" h.)
- S1986 Constitution Open Cider Jug (9¾" h.)
- S1983 Oval Trays - Set of 6 (6¾" L)
- S1831 Constitution Shell Dish (8¼" dia.)
- S1834 Constitution Sm. Square Bowl (6½" dia.)
- S1981 Luncheon Plates - Set of 6 (9" dia.)
- S1980 Mugs - Set of 6 (4½" h.)
- S1832 Constitution Trumpet Vase (11" h.) *as a Lamp*



# Mottahedeh

## DIPLOMATIC SERVICE

These porcelain accessories were designed by Mottahedeh especially for the diplomatic reception rooms of the Department of State and the White House. They may also be found in many U.S. embassies around the world. The designs are adapted from Chinese export porcelain, circa 1810, bearing one of the earliest depictions of the American eagle found in ceramic decoration.



- WH4D Eagle Trumpet Vase (11" h.)
- WH6D Eagle Cachepot (6 7/8" dia.)
- WH8D Eagle Plate (9 1/4" dia.)
- WH5D Eagle Sm. Square Bowl (6 1/8" sq.)
- S1631 Discovery Pitcher (7 1/4" h.)
- WH1D Eagle Oval Tray (6 7/8" L)
- WH2D Eagle Shell Dish (8 1/4" sq.)
- WH11D Eagle Sm. Lobed Tray (4 3/8" L)
- WH9D Eagle Cup and Saucer (Cup 2 7/8" h., Saucer 5 1/4" dia.)
- WH10D Eagle Pitcher (7 1/4")
- S1500 Eagle Mug (4 1/2" h.)



# Mottahedeh



## BLUE & WHITE

- HC82 Blue Canton Rectangular Covered Box (small) (1½"h., 3½"w., 3"d.)  
 HC196 Blue Canton Rectangular Covered Box (large) (1½"h., 5¾"w., 4½"d.)  
 HC195 Blue Canton Rectangular Covered Box (medium) (1¾"h., 4½"w., 3¾"d.)  
 HC194 Blue Canton Octagonal Tray (8¼")  
 CW2415 Imperial Blue Leaf Dish (10" x 5½") *Disc*



## FU DOG JARS

Imperial Garden Lions or Fu Dogs were powerful mythic protectors found seated in front of Imperial Palaces and the homes of important persons. These mythical creatures were adapted to form the finials of Chinese style jars.

- Y2366 Tobacco Leaf Fu Dog Jar (5" dia. x 6"h.)  
 Y1688 Famille Verte Fu Dog Jar (7½" dia., 9¾"h.)



## SQUARE TRAYS



- S1517 Chinoise Blue Square Tray (large) (6¾" sq.)  
 S1516 Chinoise Blue Square Tray (small) (5" sq.)



- HC78 Blue Canton Rectangular Tray (large) (6½" x 7")  
 HC77 Blue Canton Rectangular Tray (small) (4½" x 5½")



- Y1714 Famille Verte Rectangular Tray (small) (5½" x 4½")  
 Y1715 Famille Verte Rectangular Tray (large) (7½" x 6")

# Mottahedeh



## LEAPING REINDEER

The Leaping reindeer was inspired by an American calligraphic drawing in the Colonial Williamsburg's Abby Aldrich Rockefeller Folk Art Museum.

- CW3205 Pencil Tray (8" x 4")
- CW3204 Mug (4" h.)
- CW3203 Canape Plate (8" square)
- CW3202 Luncheon Plate (8" dia)



## VERSE TRAYS



- S2504 Great is the Man (5 1/2")
- S2803 Family Fudge (5")
- MN1730 Books (5")

- MN1706 Cornflower (5 1/2")
- MN1708 Faith (4 1/2")
- MN1705 J'aime et J'espere (4 1/2")
- MN1709 Knowledge (4 1/2")
- MN1707 Music (4 1/2")



# Mottahedeh



## RING TRAYS

- S2810 "Mother's Love" Ring Tray (5¾" L.)
- S2811 "Golf as in Life" Ring Tray (5¾" L.)
- S2812 "Young Heart" Ring Tray (5¾" L.)
- S2813 "Love Knows No Bounds" Ring Tray (5¾" L.)
- S2814 "Loyal Book" Ring Tray (5¾" L.)
- S2815 "Tennis" Ring Tray (5¾" L.)

- MN1705 "Jaime et J'espere" Ring Tray (4½" L.)
- MN1707 "Music" Ring Tray (4½" L.)
- MN1708 "Faith" Ring Tray (4½" L.)
- MN1709 "Knowledge" Ring Tray (4½" L.)



- MN1725 "Books" Rectangle Ring Tray (5¾" L.)
- S2816 "Pet" Ring Tray (5¾" L.)
- MN1730 "Books" Oval Ring Tray (5½" L.)
- S2817 "Family is a Gift" Ring Tray (5¾" L.)



# Mottahedeh

## RING TRAYS



- CW2605 "Faithful Friend" Ring Tray (5¼" l.)
- CW2606 "Love Bears All Things" Ring Tray (5¼" l.)
- CW2604 "Liberty of Choice" Ring Tray (5¼" l.)
- S2804 "Great is the Man" Ring Tray (5¼" l.)

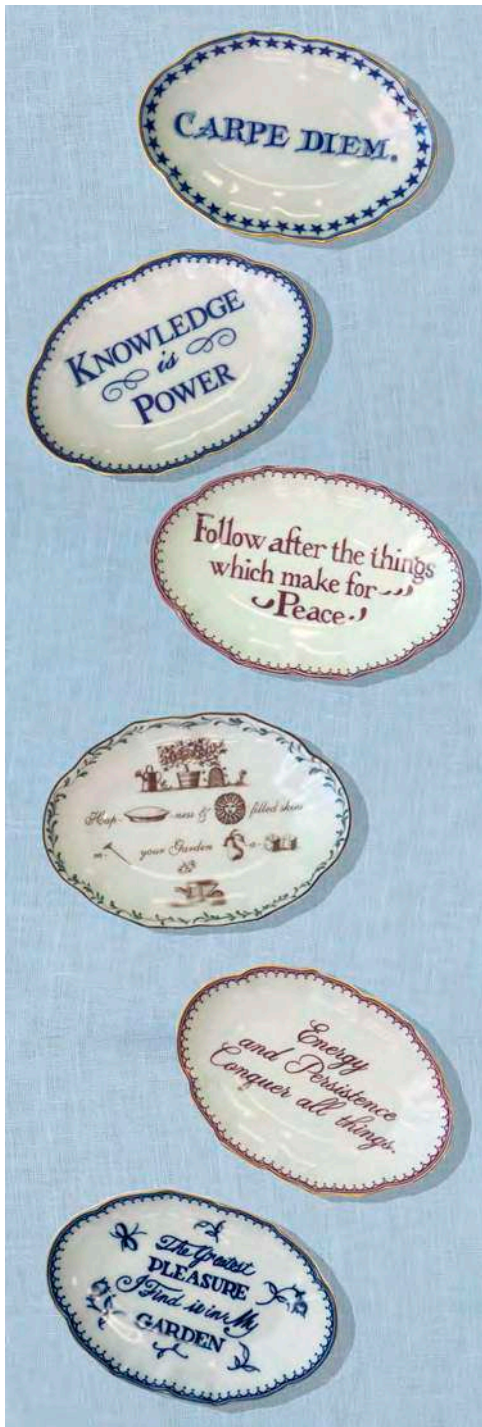
- S2801 "Familiar Acts are Beautiful" Ring Tray (5¼" l.)
- S2809 "Traditional Golfers" Ring Tray (5¼" l.)
- S2802 "Strong Man" Ring Tray (5¼" l.)



- CW2611 "Many are the Stars" Ring Tray (5¼" l.)
- CW2610 "Take Care" Ring Tray (4½" l.)
- CW250B "Trifling is My Present" Ring Tray (5¼" l.)
- CW250R "Remember Me" Ring Tray (5¼" l.)

- W11D "Eagle" Ring Tray (4½" l.)
- S2803 "Families are Like Fudge" Ring Tray (5¼" l.)
- CW2609 "Christmas" Ring Tray (5¼" l.)
- CW251 "As Time Flies" Ring Tray (5¼" l.)
- W1201 "Friendship Sweetens" Ring Tray (4½" l.)

# Mottahedeh



## RING TRAYS

- CW2602 "Carpe Diem" Ring Tray (5 3/4" l.)
- CW2607 "Knowledge is Power" Ring Tray (5 3/4" l.)
- CW2603 Peace Ring Tray (5 3/4" l.)
- CW2601 Rebus Tray (5 3/4" l.)
- CW2608 Energy & Persistence Ring Tray (5 3/4" l.)
- CW2600 Garden Ring Tray (5 3/4" l.)

- S2805 "Mother" Ring Tray (8" x 4 1/4" l.)
- S2806 "Father" Ring Tray (8" x 4 1/4" l.)
- S2807 "Sister" Ring Tray (5 3/4" x 4" l.)
- S2808 "Brother" Ring Tray (5 3/4" x 4" l.)



CW2615 "Rebellion" Ring Tray (3 1/4")



CW2612 "Love Unites Us" Ring Tray (3 1/4")



CW2613 "The Present Fashion" Ring Tray (3 1/4")



CW2614 "The Best" Ring Tray (3 1/4")



CW2616 "Scandal" Ring Tray (3 1/4")

# Mottahedeh

## RING TRAYS

- CW2617 "Tho absent" Ring Tray (5 1/4" L.)
- CW2618 "For Kindness" Ring Tray (3 1/4" L.)
- CW2622 "Tea and Hope" Ring Tray (5 1/4" L.)
- CW2619 "Beloved by all" Rebus Tray (8 1/4" L.)



- S2825 "Knowledge & Wisdom" Ring Tray (5 3/4 x 4 1/2" L.)
- S2828 "Fairway of Life" Ring Tray (5 3/4" x 4 1/2" L.)



MV1801 "Liberty" Ring Tray (3 1/4")

MV1800 "True Friendship" Ring Tray (3 1/4")

S1988 "My Heart is Fix'd" Ring Tray (3 1/4")

# Mottahedeh



## RING TRAYS

S627B "Ability" (5 3/4" x 4 1/2")  
 S2350 Eagle Orange (4 1/2" x 3 1/2")

S2819 "Two kinds of people" (5 1/4" dia.)  
 S2820 "Golf as in Life" w/ swag (5 1/4" l.)  
 S2822 "Don't shake the Tree" (4 1/2" x 3 1/2")

S2823 "Mother Daughter" (5 3/4" l.)  
 S2824 "Friend with Chocolate" (4 1/2" x 3 1/2")  
 S2829 "Favorite Breed - Adopted" (5" l.)

S2830 "Rescue, Save, Love" (5" l.)  
 S2833 "Nature Beauty" (5 1/4" l.)

# Mottahedeh



S2827 "Person who never gives up" (5 3/4" x 4")

## RING TRAYS

Some great words of wisdom from our former American Presidents, (and a favorite First Lady Eleanor Roosevelt) make this a timeless collection. Made of high fire porcelain and hand-edged in 22K gold.

- S2826 "Believe you can" (5 3/4" x 4")
- S2834 "Those who dare" (5 3/4" x 4")
- S2835 "Whatever you are" (5 3/4" x 4")
- S2836 "The Object of Love" (5 3/4" x 4")
- S2837 "Great minds discuss ideas" (5 3/4" x 4")
- S2838 "Mankind must put an end to war" (5 3/4" x 4")
- S2839 "If your actions inspire others" (5 3/4" x 4")
- S2840 "Life is Grand" (5 3/4" x 4")
- S2841 "We can't help everyone" (5 3/4" x 4")

# Mottahedeh



## ARTICHOKES

The Artichoke Tureen was inspired by an English porcelain of the mid 1800's and is handpainted in Italy with 22 carat gold accents. The Centerpiece and Small Bunch were created in honor of the 50th anniversary of our partnership with Basso Factory of Italy.

- S6449 *Artichokes Centerpiece* (16" h.)
- S6469 *Artichokes Small Bunch Triple* (8" l. x 4½" h.)
- TD301 *Artichokes Tureen and Stand* (Tureen 6½" h. x 5½" w. Stand 8½" dia.)



## NUTLEAF

Naturalist will love the leaves and nuts of four North American trees. Shown are Pecan, Oak, Hazel Nut, and Chestnut. Accented with gold flecking at the rim.

- S802 *Nutleaf Dessert Set of Four* (8½" dia.)
- S802GB *Nutleaf Dessert Plate Set of Four with Gift Box*
- S804 *Nutleaf Cup and Saucer Set of Four*
- S804GB *Nutleaf Cup and Saucer Set of Four with Gift Box*
- S807 *Nutleaf Cake Plate*



## MAJOLICA

Majolica refers to brightly colored faience historically made in Europe. Shown here are re-introductions of time honored pieces.

- S4157 *Ibis and Lotus Compote* (9¼" h. x 5¼" w.)
- U6522 *Lettuce Tureen and Stand, Large* (8" h., 12" dia.)
- U6528 *Lettuce Box and Stand* (5" h., 8" dia.)



# Mottahedeh



TONY  
DUQUETTE

## NOBLE STAGS

The Noble Stag is available in two sizes; a tureen and a smaller compote. Both feature black matte glaze and brass metal antlers. These pieces are hand painted with 22k gold accents.

TD408	Stag Compote	(5½" x 2" x 7")
TD409	Stag Tureen	(14" x 6" x 15")



## BASALT CACHEPOTS

These French inspired cachepots in two shapes feature gold garlands with fleur-de-lis center motif on matte black glaze to emulate black basalt. Lion head handles enhance the classic design.

TD410	Oval Cachepot	(14" l. x 7" w.)
TD411	Round Cachepot, Large	(9½" dia. x 8" h.)
TD412	Round Cachepot, Small	(7½" dia. x 6" h.)
TD402	Lobed Plate	(9½" dia.)



## MELON TUREEN & STAND

Add some theater to your entertaining with this individual tureen. Glazed with matte white and painted with matte gold. It is a show stopper.

TD302	Melon Tureen and Stand	(Tureen 6½" h. x 6½" w. Stand 8½" dia.)
-------	------------------------	---

# Mottahedeh



S2980 *Carp Tureen*  
(19" L. x 11" w.)

This exact reproduction of a monumental tureen, circa 1740-1760, with salmon-red enamel highlighted in gold is a striking realization of the ancient Chinese symbol of a carp representing success and plenty.



The large and small Carp Platters are adaptations of a Chinese Export platter circa 1750-60. The originals are from the Dallas Museum of Art, Wendy Reeves Collection. The naturalistically painted carp motif has been adapted in a Chinese Export shell dish and monteith cachepot.

- DM1868 *Carp Shell Dish (8" x 8")*
- DM1867 *Carp Platter, Large (16" L)*
- DM1866 *Carp Platter, Small (10½" L)*
- DM1870 *Carp Monteith Planter (15" dia., 10¼" h.)*

- S2986 *Rooster Platter, Small (10½" L)*
- S2987 *Rooster Platter, Large (16" L)*

# Mottahedeh



CW3450 Brighton Pavilion Parrots, left (10" h., 13½" w.)

*DSC*

CW3420 Brighton Pavilion Birds, right and below (16½" h.)

The Brighton Pavilion birds and parrots are inspired by motifs on an 18th century Chinese wallpaper in the Lightfoot House at Colonial Williamsburg.



S5255 Exotic Birds, left (12¾" h.)

S5247 Cockatoos, far right (15½" h.)

S5259 Parakeets, below (7" h., 10½" w.)

These figurines are reproductions of Meissen originals, modeled by J.J. Kaendler and dating from the mid 18th century.



# Mottahedeh



## CREAMWARE

F6683 *Bird Tureen Large (4 qt.) Stand (14 dia.)*  
F6684 *Bird Tureen Small (7 1/2" h.) and Stand (8 3/4" dia.)*



S4196 *Lion Tureen (4 qt.) and Platter (14 1/2" l.)*



U6216 *Bull Dogs, Pair (Each 9" h. x 11 1/2" l.)*

# Mottahedeh



## CREAMWARE

### LONGTON HALL

Mottahedeh's creamware features the "delightful Rococo forms" and crisp strawberry leaf design which Longton Hall, the first porcelain factory in Staffordshire, England, produced between 1754 and 1757.

- S4031 Longton Dessert Plate (8 3/4" dia.)
- S4032 Longton Cake Plate (13" dia.)
- S4033 Longton oval Basket (10" l.)
- S4034 Longton Cookie Plate (11" l.)



### PONT AUX CHOUX

- S4605B Pot de Creme - set of 4
- S4617 Pot de Creme Saucers - set of 4 (5" dia.)

# Mottahedeh



## CREAMWARE

- S6201 Urn with Latticework (16" h.)
- S6202 Chinese Large Handled Vase with Cover (19" h.)
- S6203 Chinese Square Vase (14" h)
- S6204 Chinese Open (13" h.)
- S6208 Chinese Octagon Urn with Cover (13" h.) S6209 Wall of China Covered Jar (17" h.)
- S6210 Tall Greek Key Jar with Cover (16" h.)
- S4080 Creamware Square Candlestick (12" h.)
- U6681 Three Ladies Candlestick (13" h.)
- S6200 Napoleon Candlestick (13" h.)



# Mottahedeh



## CREAMWARE

- S6500 *Oval Embossed Cachepot (9 1.2" l. 6 1/2" h.)*
- S6505 *Round Embossed Cachepot (8" l. x 6" h.)*

S4030 *Sheffield Handled Centerpiece (13" l. x 9 1/2" w.)*

- S4097 *Chinese Man and Woman - Pair*
- S4098 *Chinese Guitar Player - single (11" h)*
- S4097 *Chinese Lady with Bird - single (13" h.)*

S4324 *Monkey Bookends (8" h.)*



# Mottahedeh



## CREAMWARE

- S4082 *Dolphin Candlestick* (9 1/2" h.)
- S4084 *Dolphin Centerpiece Large* (10" h. x 11" l.)
- S4083 *Dolphin Centerpiece Medium* (7" h. x 9 1/2" l.)
- S4401 *Medallion Basket* (5 1/2" h. x 14 1/2" l.)
- S4455 *Lewis Tureen* (9 1/2" h. x 11 1/2" l.)



# Mottahedeh



## CREAMWARE

- S4086 *Dancing Monkeys Pair* (15 1/2" h.)
- S4092 *Queensware Heart Server* (14 1/2" dia.)
- S4400 *Arichoke Tureen* (9" h. x 8" dia.)



## MAJOLICA

- U6524 *Artichoke Box* (4 1/2" h.)

# Mottahedeh



## PASSION FOR MAPS

WORLD MAP HONDIUS

Reproductions of original maps and lithographs of Hondius, Jansson, Blaeu and Mottram.

*NEW YORK HARBOR 1855 by Charles Mottram*

- MP1200 Mug (4½" h.)
- MP1201 Small Rectangular Tray (7½" x 3½")
- MP1202 Large Rectangular Tray (10¾" x 7½")
- MP1203 Square Plate (8¼" x 8¼")

*WORLD MAP by HONDIUS c. 1630*

- MP1205 Mug (4½" h.)
- MP1206 Small Rectangular Tray (7½" x 3½")
- MP1207 Large Rectangular Tray (10¾" x 7½")
- MP1208 Square Plate (8¼" x 8¼")

*BLAEU MERCATOR MAP c. 1606*

- MP1210 Mug (4½" h.)
- MP1211 Small Rectangular Tray (7½" x 3½")
- MP1212 Large Rectangular Tray (10¾" x 7½")
- MP1213 Square Plate (8¼" x 8¼")



MP1200      MP1205      MP1210



# Mottahedeh



G1409 Eagle Large Cachepot (10¾" dia.)

G1411 Eagle Small Cachepot (5½" dia.)

The Grossman Collection of Victorian antique papers is one of the foremost archives of early graphics in the United States and likely the world. Mottahedeh reproduces these images on a new collection of porcelain giftware.



S1413 Colonial Eagle Small Cachepot (5½" dia.)



G1410 Eagle Large Box (5¾" x 4½")



S1412 Colonial Eagle Large Box (5¾" x 4½")

S906E Indigo Wave Eagle Platter (13¾" L)

S910E Indigo Wave Square Canape with Eagle (8" x 8")

S911E Indigo Wave Eagle Mug (4 ¼" h.)

S925 Indigo Wave Divina Vase (16" h.)

S925E Indigo Wave Divina Vase with Eagle (16" h.)



# Mottahedeh



## ROOKWOOD

Mottahedeh has partnered with Rookwood Art Pottery to introduce vintage and classic vessels that reflect the rich history of Rookwood, one of America's most honored decorative arts companies. Founded in Cincinnati in 1880 by Maria Longworth Nichols, Rookwood Pottery was the first female-owned manufacturing company in the United States. Rookwood is known for sophisticated gradient glazes and we have taken a simplified version of these for a contemporary yet classic, casual yet elegant look. They are excellent for tall and dramatic flower arrangements.



R1504WG Sung Vase White & Gray (20" h., 10" dia.)  
 R1504RB Sung Vase Red & Black (20" h., 10" dia.)  
 R1504VB Sung Vase Verdigris & Blue (20" h., 10" dia.)



R1501WG Lozenge Vase White & Gray (17" h., 9½" dia.)  
 R1501RB Lozenge Vase Red & Black (17" h., 9½" dia.)  
 R1501VB Lozenge Vase Verdigris & Blue (17" h., 9½" dia.)



R1502WG Callalily Vase White & Gray (21" h., 11¼" dia.)  
 R1502RB Callalily Vase Red & Black (21" h., 11¼" dia.)  
 R1502VB Callalily Vase Verdigris & Blue (21" h., 11¼" dia.)



R1503WG Classic Vase White & Gray (19½" h., 8" dia.)  
 R1503RB Classic Vase Red & Black (19½" h., 8" dia.)  
 R1503VB Classic Vase Verdigris & Blue (19½" h., 8" dia.)

# Mottahedeh



## ROOKWOOD

- R1507YB Orion Compote Gold & Brown (5" h., 11" dia.)
- R1507YBF Orion Flower Bowl w/Frog Gold & Brown (5" h., 11" dia.)
- R1506YB Orion Ewer Gold & Brown (12" h., 8" dia.)
- R1505YB Orion Barrel Jar Gold & Brown (11" h., 9" dia.)



- R1510SB Pinecone Rectangular Platter  
Salmon, Verdigris & Brown (19" l. x 12" w.)
- R1509SB Pinecone Large Square Tray  
Salmon, Verdigris & Brown (12" l. x 12" w.)
- R1508SB Pinecone Small Square Tray  
Salmon, Verdigris & Brown (9" l. x 9" w.)

# Mottahedeh

## HEIRLUMINARE HOME FRAGRANCE CANDLES

WHEN THE FRAGRANCE  
IS A MEMORY,  
THE VESSEL IS A TREASURE.

### BLUE CANTON

Well known in Colonial America, blue and white Canton ware set the most fashionable tables. Named for the great Chinese trading port from which it came, Blue Canton today is part of the heritage of many American families.

**Fragrance: Air de Bergamia**

Top Notes: citrus, lemon, orange

Heart Notes: bergamot, tea notes, raspberry, peach

Background Note: moss

HC86V Blue Canton Fu Dog Vessel (6½" h., 5½" dia.)  
23 oz. net 80 hrs. average burn time

HC148V Blue Canton Shang Vessel (5" h., 3½" dia.)  
8 oz. net 65 hrs. average burn time



### TOBACCO LEAF

This extravagant design was originally made in China for the Portuguese market. A small phoenix bird perches on the leaves of the flowering Nicotiana (Tobacco) plant. 27 colours and 22k gold make up this pattern, based on an original in the Metropolitan Museum of Art.

**Fragrance: Mediterranean Fig**

Top Notes: bergamot, lemon

Heart Note: fig

Background Notes: jasmine, musk

Y2366V Tobacco Leaf Fu Dog Vessel (6½" h., 5½" dia.)  
23 oz. net 80 hrs. average burn time

S2362V Tobacco Leaf Shang Vessel (5" h., 3½" dia.)  
8 oz. net 65 hrs. average burn time



### FAMILLE VERTE

This graceful design, with its leaves, berries and butterflies, was derived from antique Chinese Palace porcelain. At a time when porcelain was valued because of its rarity, highly prized examples found their way to Europe. Kangxi Period (1662-1722).

**Fragrance: Cedar, Sandlewood & Clove**

Top Notes: lemon, lavender, cinnamon

Heart Notes: cedar, cloves, sandlewood

Background Notes: tonka bean, amber, musk

Y1702V Famille Verte Fu Dog Vessel (6½" h., 5½" dia.)  
23 oz. net 80 hrs. average burn time

Y1698V Famille Verte Shang Vessel (5" h., 3½" dia.)  
8 oz. net 65 hrs. average burn time



### DUKE OF GLOUCESTER

This extraordinary design is adapted from a dinner service originally made for William Henry, Duke of Gloucester, circa 1770. It incorporates fruit, imaginary insects and colorful fruit, surrounded with 22 carat gold.

**Fragrance: Orchard Plum**

Top Notes: coriander, rhubard, orange

Heart Notes: plum, peach, jasmine

Background Notes: sandlewood, vanilla, musk

CW1505V Duke of Gloucester Fu Dog Vessel (6½" h., 5½" dia.)  
23 oz. net 80 hrs. average burn time

CW1522V Duke of Gloucester Shang Vessel (5" h., 3½" dia.)  
8 oz. net 65 hrs. average burn time



# Mottahedeh



## HEIRLUMINARE HOME FRAGRANCE CANDLES

WHEN THE FRAGRANCE IS A MEMORY,  
THE VESSEL IS A TREASURE.



### CORNFLOWER LACE

**Fragrance:** Grapefruit, Vanilla & Pear

**Top Notes:** grapefruit, lemon, pear

**Heart Notes:** elemi, gentian, galbanum

**Background Notes:** vanilla, tonka, musk

S1462V Grand Round Vessel (3½" h., 4¾" dia.) 6.5 oz. net  
17 hrs. average burn time

S1463V Petite Round Vessel (2¾" h., 3" dia.) 2 oz. net  
13 hrs. average burn time



### GREEN LEAF LACE

**Fragrance:** Green Jasmine Tea

**Top Notes:** orange, lemon, jasmine

**Heart Notes:** rose, green note, mint, fruit

**Background Notes:** musk, coconut

S1562V Grand Round Vessel (3½" h., 4¾" dia.) 6.5 oz. net  
17 hrs. average burn time

S1563V Petite Round Vessel (2¾" h., 3" dia.) 2 oz. net  
13 hrs. average burn time



### COBALT BLUE LACE

**Fragrance:** Rose, Ginger & Mandarin Flower

**Top Notes:** bergamot, lemon, mandarin flower

**Heart Notes:** tuberose, jasmine, ginger, ylang-ylang

**Background Notes:** cedarwood, amber, vanilla, cinnamon

S1662V Grand Round Vessel (3½" h., 4¾" dia.) 6.5 oz. net  
17 hrs. average burn time

S1663V Petite Round Vessel (2¾" h., 3" dia.) 2 oz. net  
13 hrs. average burn time



### GREEN APPLE LACE

**Fragrance:** Fresh Lemon Verbena

**Top Note:** lemon zest

**Heart Note:** verbena

**Background Note:** white tea

S1362V Grand Round Vessel (3½" h., 4¾" dia.) 6.5 oz. net  
17 hrs. average burn time

S1363V Petite Round Vessel (2¾" h., 3" dia.) 2 oz. net  
13 hrs. average burn time

# Mottahedeh

## HEIRLUMINARE HOME FRAGRANCE CANDLES

WHEN THE FRAGRANCE IS A MEMORY,  
THE VESSEL IS A TREASURE.

### AMERICAN EAGLE VOTIVE

This porcelain was designed especially for diplomatic reception rooms of the Department of State and the White House, bearing one the earliest depictions of the American Eagle found in ceramic decoration. Candle is 100% natural wax producing a clear, smoke-free burn. The scent is mild and woody.

**Fragrance: Amber, Musk & Jasmine**

S1500V American Eagle Votive (3" dia., 5" h.), 9.9 oz. net, 60 hrs. avg. burn time



### BUTTERFLY VOTIVES

Our Heirluminare collection now includes these beautiful votives, with finely detailed paintings of butterflies that migrate from Costa Rica to the United States. Each candle features one of four exquisite butterflies and has a fresh botanical fragrance to match. 23 hours average burn time.

**Blue Morpho Fragrance:** honey, lily of the valley, orange blossom

**Monarch Fragrance:** green tea, lavender, mint

**Swallowtail Fragrance:** lemon, green leaves, vanilla

**Helicon Fragrance:** orange, cinnamon, musk

S410V Blue Morpho Votive (4½" dia.), 6.3 oz. net

S412V Swallowtail Votive (4½" dia.), 6.3 oz. net

S411V Monarch Votive (4½" dia.), 6.3 oz. net

S413V Helicon Votive (4½" dia.), 6.3 oz. net

### TWO VOTIVES WITH TRAY



#### CORNFLOWER LACE

**Fragrance: Grapefruit, Vanilla & Pear**

S1464V Two Votives w/Tray (3" h., 7" w.) 4 oz. net, 26 hrs. avg. burn time



#### GREEN LEAF LACE

**Fragrance: Green Jasmine Tea**

S1564V Two Votives w/Tray (3" h., 7" w.) 4 oz. net, 26 hrs. avg. burn time



#### COBALT BLUE LACE

**Fragrance: Rose, Ginger & Mandarin Flower**

S1664V Two Votives w/Tray (3" h., 7" w.) 4 oz. net, 26 hrs. avg. burn time



#### GREEN APPLE LACE

**Fragrance: Fresh Lemon Verbena**

S1364V Two Votives w/Tray (3" h., 7" w.) 4 oz. net, 26 hrs. avg. burn time

# Mottahedeh

## HEIRSAVONARE GIFT SOAPS



### PORCELAIN TRAYS PAIRED WITH THREE LUXURY SCENTED GIFT SOAPS

Our classic porcelain tray designs, paired with the highest quality, pure vegetable oil soaps, add a touch of old world style and will delight your guests. Soaps are scented with a brilliant creation that combines the intensity of blooming rose, jasmine and tart cassis with the richness of Damascus plum and white peach. A base of golden sandalwood and liquid amber completes this unique blend. Formulated expressly for Mottahedeh.

**Essential Oils:** Geranium, Cinnamon, Elemi

Soaps 2.25oz. /63.7g. each Soap Dishes 4" l. x 3" h.



### BLUE CANTON

HC117SP Blue Canton Gift Soap Set



S-Soap Gift Soap Bars (Set of 3)



### GOLDEN BUTTERFLY

M37SP Golden Butterfly Gift Soap Set



### FAMILLE VERTE

Y1708SP Famille Verte Gift Soap Set



### TOBACCO LEAF

Y2346SP Tobacco Leaf Gift Soap Set



### SACRED BIRD & BUTTERFLY

HC632SP Sacred Bird & Butterfly Gift Soap

EACH PIECE, A MASTERPIECE



THE LAMP COLLECTION BY

*Mottahedeh*



**MOTTAHEDEH** has been recognized around the world for the quality of its museum reproductions in porcelain, stoneware and faience. Mottahedeh has now partnered with Rookwood Art Pottery to introduce vintage and classic vessels that reflect the rich history of Rookwood, one of America's most honored decorative accessories companies, founded in Cincinnati in 1880 by Maria Longworth Nichols.

"Behind every piece is a story", Mottahedeh President Wendy Kvalheim says. "Having a love for the simple style and rich glazes that characterize Rookwood, we are glad to see this venerable period brought back to life."

The smooth vellum glazes are produced using original formulas of the period. Shades are linen on paper.



RI502WGL  
Callalily Vase Lamp White & Gray  
Overall Height 35" Shade Width 22"  
Shade Height 13"



RI502RBL  
Callalily Vase Lamp Red & Black  
Overall Height 35" Shade Width 22"  
Shade Height 13"



RI502VBL  
Callalily Vase Lamp Verdigris & Blue  
Overall Height 35" Shade Width 22"  
Shade Height 13"



RI503WGL  
Classic Vase Lamp White & Gray  
Overall Height 35" Shade Width 22"  
Shade Height 13"



RI503RBL  
Classic Vase Lamp Red & Black  
Overall Height 35" Shade Width 22"  
Shade Height 13"



RI503VBL  
Classic Vase Lamp Verdigris & Blue  
Overall Height 35" Shade Width 22"  
Shade Height 13"



R1504WGL  
Sung Vase Lamp White & Gray  
Overall Height 35" Shade Width 22"  
Shade Height 13"



R1504RBL  
Sung Vase Lamp Red & Black  
Overall Height 35" Shade Width 22"  
Shade Height 13"



R1504VBL  
Sung Vase Lamp Verdigris & Blue  
Overall Height 35" Shade Width 22"  
Shade Height 13"



R1501WGL  
Lozenge Vase Lamp White & Gray  
Overall Height 32" Shade Width 15"  
Shade Height 12"



R1501RBL  
Lozenge Vase Lamp Red & Black  
Overall Height 32" Shade Width 15"  
Shade Height 12"



R1501VBL  
Lozenge Vase Lamp Verdigris & Blue  
Overall Height 32" Shade Width 15"  
Shade Height 12"



R1506GV  
Orion Ewer Lamp Color??  
Overall Height 25" Shade Width 16"  
Shade Height 11"



R1506YB  
Orion Ewer Lamp Yellow & Brown  
Overall Height 25" Shade Width 16"  
Shade Height 11"



R1505YBL  
Orion Barrell Jar Lamp Gold & Brown  
Overall Height 25" Shade Width 16"  
Shade Height 11"

# THE CREAMWARE COLLECTION

**MOTTAHEDEH'S CREAMWARE** is a pure white earthenware body, produced with the addition of white china clay, allowing for delicate detail on the surface of the vessel. This style was first produced in Staffordshire, England and perfected by Josiah Wedgwood in 1770. Our Creamware is produced in Italy and cast and finished by hand. The scenes and motifs depicted are Chinese in origin.



S6204L  
Creamware Chinese  
Bouquet Lamp  
Overall Height 35"  
Shade Width 22"  
Shade Height 13"



S6208L  
Creamware Footed  
Octagonal Urn Lamp  
Overall Height 35"  
Shade Width 22"  
Shade Height 13"



S6210L  
Creamware Greek  
Key Lamp  
Overall Height 35"  
Shade Width 22"  
Shade Height 13"



S6209L  
Creamware Wall of  
China Lamp  
Overall Height 35"  
Shade Width 22"  
Shade Height 13"

# THE TRADITIONAL COLLECTION

**LAMPS OF DISTINCTION.** A rigorous standard of excellence has been extended to lighting, with this collection of historic table lamps that is regarded as one of the finest available. The collection includes range of shapes, colors, and sizes that are versatile enough to accent a wide variety of interiors. Classic in style, Mottahedeh's emphasis on color is superbly realized in these lamps with some designs requiring as many as 27 individual colors. Many of the lamps are produced of finest quality hard porcelain. The shades are fine silk and each comes fitted with a decorative finial. The bases have been created to compliment the design and materials, including hand-finished hardwood, gold leaf, marble and brass. All lamps are UL approved, and hand-assembled in the United States..



CW1592L  
Duke of Gloucester  
Ginger Jar Lamp  
Height 29"



CW2422L  
Imperial Blue  
Ginger Jar Lamp  
Height 31"



CW3420L  
Brighton Pavilion Birds  
Lamps, Pair  
Height 32"



HC132L  
Blue Canton Ginger Jar Lamp  
Overall Height 31"



HC139L  
Blue Canton Tea Jar Lamp  
Overall Height 21"



HC241L  
Bamboo Covered Jar Lamp  
Overall Height 21"



HC79L  
Blue Canton Shang Vase Lamp  
Overall Height 20"



HC83L  
Blue Canton Trumpet Lamp  
Overall Height 25.5"



SI92L  
Blue Canton Tea Jar Lamp  
Small  
Overall Height 25"



HC118L  
Blue Canton Temple Jar Lamp  
Overall Height 25"



Y2357L  
Tobacco Leaf Large  
Ginger Jar Lamp  
Overall Height 30"



Y2360L  
Tobacco Leaf Trumpet Lamp  
Overall Height 21"



S4324L  
White Monkey  
Lamps, Pair  
Overall Height 23"



WH4DL  
Diplomatic Eagle Trumpet Vase Lamp  
Overall Height 25.5"



CW2444L  
Chelsea Bird Trumpet Lamp  
Overall Height 25.5"