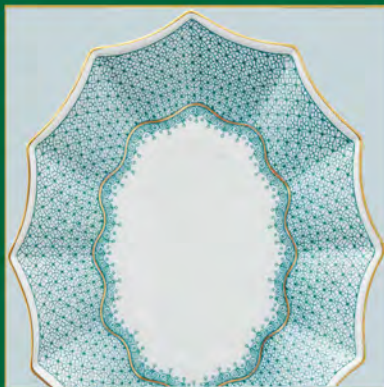
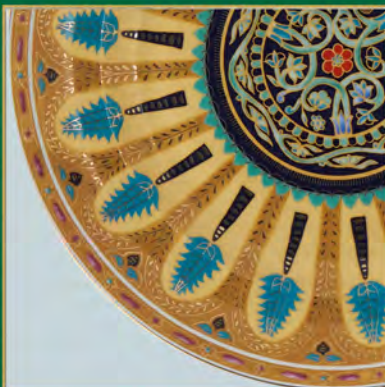


EACH PIECE, A MASTERPIECE



Mottahedeh

Mottahedeh

Table of Contents

Dinnerware Patterns

Blue Canton	D-1	Blue Shou	D-37
Tobacco Leaf	D-9	Virginia Blue	D-43
Ch'ing Garden	D-11	Green Lace	D-45
Imperial Blue	D-13	Apple Lace	D-46
Blue Lace	D-14	Cornflower Lace	D-46
Blue Dragon	D-14C	Pink Lace	D-46C
Famille Verte	D-15	Peacock	D-46E
Sacred Bird & Butterfly	D-18A	Chelsea Feather Gold	D-46F
Mandarin Bouquet	D-19	Emmeline	D-51
Cincinnati Service	D-20A	Indigo Wave	D-53
Gabriel	D-20B	Sylvaniae	D-55
Duke of Gloucester	D-21	Bargello	D-56
Chelsea Bird	D-25	Starburst Medallion	D-59
Prosperity	D-27	Barriera Corallina	D-61
Chinoise Blue	D-29	Service Plates	D-63
Golden Butterfly	D-33	Leaf	M-1
Palma	D-35	Tin Picnic Sets	M-3

Giftware

General Giftware	G-1
American Ships	G-5
Diplomatic Service	G-6
Ring Trays	G-9
Majolica	G-13
Birds	G-16
Creamware	G-17
Rookwood	G-27
Heirluminare Votives	G-29
Heirsavonare Soaps	G-32

Lamps

Lamps	P-116
-------	-------

Price-lists

Dinnerware	P-123
Giftware	P-129
Lamps	P-134
Votives, Soaps	P-134
Leaf	P-135

Mottahedeh



Dinnerware

Mottahedeh



BLUE CANTON

The most fashionable tables in early American Republic were set with blue and white "Canton" or "Nanking" wares, named for the great Chinese trading ports from which they came. Chinese blue and white porcelain was in demand in this country well into the nine-teenth century and has become a part of the heritage of many American families. Blue Canton faithfully recaptures the centuries-old tradition and taste.

- HC100 *Five Piece Place Setting*
- HC101 *Dinner Plate (10" dia.)*
- HC102 *Dessert Plates, set of 4 (8½" dia.)*
- HC103 *Bread and Butter Plate (6¾" dia.)*
- HC104 *Teacup and Saucer*
- HC117 *Master Salt (4" x 3")*
- HC142 *Pot de Creme (3 1/4" h)*

- HC88 *Large Dinner Plate (10 3/4" dia.)*



Mottahedeh



BLUE CANTON

Recognized by the blue lattice border surrounding a variety of landscape scenes, this popular Chinese pattern inspired a number of European versions, most notably English stoneware.

- HC107 Coffeepot (48 oz., 9" h.)
- HC108 Teapot (40oz., 6 1/2" h.)
- HC110 Creamer (3 1/2" h.)
- HC109 Sugar (4 3/4" h.)

- HC136 Large Cup and Saucer (Cup 4 1/2" dia.)
- HC149 Can Cup and Saucer (2 1/4" h.)
- HC104 Tea Cup and Saucer (3 3/4" dia.)
- HC103 Demitasse Cup and Saucer 1 1/2" h.)

- HC1131 Mug (4 1/2" h.)
- HC148 Shang Mug(4" h.)
- HC142 Cereal Bowl (6 1/2" dia.)



Mottahedeh



BLUE CANTON



- HC106 *Rim Soup Plate (9¼" dia.)*
- HC93 *Octagonal Tureen and Platter (Tureen 12½" l., Platter 15½" l.)*

- HC138 *Dessert Bowl (SIZE???)*



- HC136B *Fruit Saucer (6¼" dia.)*
- HC92 *Coasters, Set of 4 (3¼" dia.)*



- HC118 *Temple Jar (9½" h.)*



- HC125 *Four-Lobed Cachepot (8½" x 6½")*

- HC137 *Oval Tray (7½" l.)*
- HC133 *Cigarette Cup (3½" h.)*
- HC122 *Covered Square Box (4" h.)*
- HC115 *Leaf Tray (6½" l.)*



Mottahedeh



BLUE CANTON



- S207 Square Baking Dish (9")
- S208 Quiche Dish (11" dia.)
- S206 Ramekin (3½" dia.)

HC188 Small Covered Jar (6½" h.)

HC156 Crescent Salad Plate (8½" l.)

HC120 Cookie Plate (10½" l.)
 HC138 Candy Dish (7" dia.)

HC157 Cake Plate (12¼" dia.)

HC95 Oval Vegetable (13" x 9¾")
 HC97 Medium Platter (13½" dia.)

HC121 Shell Dish (8¼" dia.)



Mottahedeh



BLUE CANTON

- HC128 Covered Oval Box (5¼" l.)
- HC91 Mustard Pot (2¾" h.)
- HC134 Octagonal Tile (5¼" h.)
- HC135 Round Tile (5¼" h.)
- HC142 Pot de Creme (3½" h.)
- HC129 Sauce Boat (7" l.)

- HC127 Covered Vegetable (10" x 9¼")
- HC117 Master Salt (4¼" dia.)

- HC126 Small Square Bowl (6½" x 6½")
- HC112 Square Salad Bowl (9" x 9" x 3½" h.)
- HC90 Porringer (6½" l.)
- HC116 Scalloped Bowl (10½" dia.)

- S4875 Vung Tau Vase (6½" h.)



Mottahedeh



BLUE CANTON

- S204 Oval Casserole (13" l., x 9" w.)
- S205 Medium Rectangular Baker (12" l. x 8½" w.)
- S203 Round Souffle (8" dia.)

S1621 Dagger Mountain Plate (11¼" dia.)

HC143 Sauce Tureen and Stand (7½" x 5½")

HC144 Pitcher (4" h.)

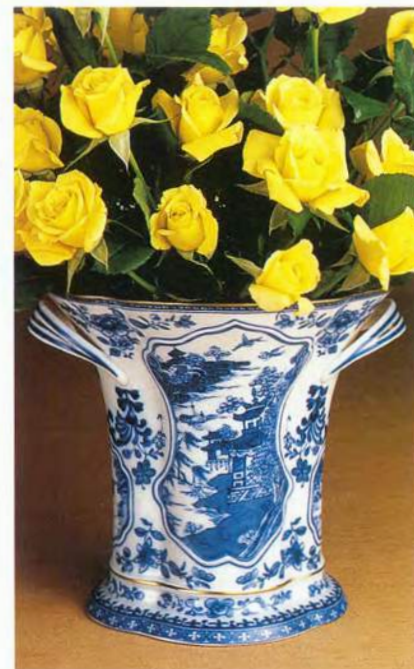
HC113 Pitcher (6½" h.)

HC114 Pitcher (4" h.)

S111 Milk Pitcher (3¾" h.)



Mottahedeh



BLUE CANTON

- HC132 Ginger Jar (16" h.)
- HC139 Tea Jar, Large (14" h.)
- S192 Tea Jar, Small (10¼" h.)
- HC96 Bough Vase (7" h.)
- HC85 Round Dish (4½" dia.)

- HC99 Bell Candlestick (10" h.)
- HC191 Small Platter (9½" x 12")
- S1629 Salt and Pepper Set (2½" h.)
- HC86 Fu Dog Jar (6½" h.)
- HC140 Cider Jug with Lid (10½" h.)




Mottahedeh



Interior detail



BLUE CANTON

- S190 Diane Basket (10½" L.) 
- HC80 Small Lobed Tray (4¾" L.)
- HC81 Medium Lobed Tray (6" L.)
- HC87 Large Square Bowl (10¼" dia.)
- HC83 Trumpet Vase (11" h.)
- HC84 Monteith Cachepot (10½" L., 6" h.)
- HC146 Casserole (ovenproof) (10"x 5")
- HC89 Oval Tureen and Stand (Tureen 12½" L., Stand 17" L.)



Mottahedeh



TOBACCO LEAF

This extravagant design was originally made in China, probably for export to the Portuguese and Brazilian markets. Of all the 18th-century dinnerware patterns, this was the most highly prized. A small phoenix bird perches on the leaves of the flowering Nicotiana (Tobacco) plant. Twenty-seven colors and 22k gold make up this pattern based on an original in the Metropolitan Museum of Art.

- Y2335 *Five Piece Place Setting*
- Y2336 *Dinner Plate (10½" dia.)*
- Y2337 *Dessert Plate (8½" dia.)*
- Y2338 *Bread and Butter Plate (7½" dia.)*
- Y2339 *Cup and Saucer (cup 2½" h.)*
- Y2340 *Rim Soup (10" dia.)*
- Y2346 *Master Salt (4¼" l.)*



- Y2348 *Round Bowl, large (9" dia.)*
- Y2349 *Round Bowl, small (8" dia.)*

Mottahedeh



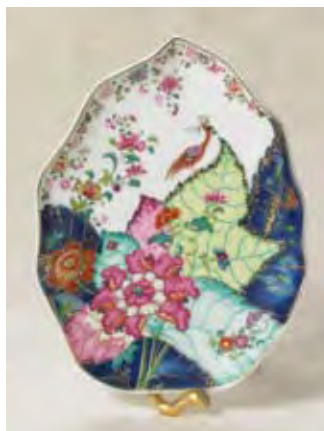
TOBACCO LEAF

Y2367 *Small Tureen and Stand* (12 oz.)
 Y2341 *Tureen* (4 qt.)

S2370 *Leaf Candy Dish* (8" l, 5½" w.)

S2371 *Cream soup and saucer*
 (6" l, 5" w, 2" h.)

Y2353 *Shell dish* (8¼" dia.)
 S2359 *Pomegranate box/Stand* (9¼" w.)
 S2369 *Eggplant Box/Stand* (9" l.)



Cream Soup Handle



Mottahedeh



TOBACCO LEAF

- Y2357 *Ginger Jar (16½" h.)*
- Y2360 *Trumpet Vase (11" h.)*
- Y2372 *Divina Vase (15¼" h.)*

- Y2342 *Teapot*
- Y2343 *Coffeepot*
- Y2344 *Covered Sugar*
- Y2345 *Creamer*

- Y2363 *Leaf Dish, Large (11½" L, 9" w.)*
- Y2354 *Octagonal Tray (8" dia.)*
- Y2352 *Oval Tray (7½" L, 5¼" w.)*
- Y2368 *Rectangular Tray (7½" L, 6¼" w.)*



Mottahedeh



TOBACCO LEAF

S2708A *Man Epergne, Large (25½" h.)*

S2709A *Man Epergne, Small (17¼" h.)*

Y2358 *Small Cachepot (4½" dia.)*

Y2347 *Cachepot (10" dia.)*

Y2364

Y2341A

Y2356

Chop Plate (13" dia.)

Octagonal Platter (15" l.)

Mug (size???)



Mottahedeh



CH'ING GARDEN

This exquisite design was inspired by hand painted 18th century Chinese wallpaper in the dining room of the Lightfoot House at Colonial Williamsburg. The decoration incorporates blossoming trees, hanging baskets of flowers and exotic birds. These were common features in Chinese inspired decorative arts, known as Chinoiserie, which were popular in Europe and colonies in the 18th Century.

- CW1600 Five Piece Place Setting
- CW1601 Dinner Plate (10" dia.)
- CW1602 Dessert Plates, set of 4 (8½" dia.)
- CW1603 Bread and Butter Plate (6¾" dia.)
- CW1604 Teacup and Saucer
- CW1607 Medium Platter (13½" l.)



Mottahedeh



CH'ING GARDEN



CW1602 *Dessert Plates, Set of 4 (8½" dia.)*

CW1612 *Cream Soup and Saucer (4¾" dia.)*

CW1613 *Dessert Bowl (4¼" dia.)*

CW1611 *Chop Plate (13" dia.)*

CW1609 *Large Square Bowl (8¾" dia.)*

CW1608 *Small Square Bowl (6¼" dia.)*




Mottahedeh



IMPERIAL BLUE

Since the Ming Dynasty, imperial blue and white porcelains have been prized by collectors and connoisseurs around the world. Edged in 22K gold, this underglaze blue dinner service is based on a Chinese export porcelain pattern, ca. 1730. The elegant design features a central flowered medallion, continuous collar and floral sprays.

- CW2400 Five Piece Place Setting
- CW2401 Dinner Plate (10½" dia.)
- CW2402 Dessert Plate (8½" dia.)
- CW2403 Bread and Butter Plate (7" dia.)
- CW2404 Teacup/Saucer
- CW2405 Rim Soup Plate (9" dia.) not shown
- CW2426 Oval Platter (15"L)
- CW2420 Medium Creamer (4½"h.) **D**
- CW2416 Dessert Bowl (4¼" dia.)

- 
- CW2411 Round Bowl (9" dia.)
 - CW2418 Scalloped Bowl (8" dia.)



Mottahedeh



IMPERIAL BLUE

- CW2408 Teapot (6½" h.)
- CW2407 Coffeepot (9½" h.)
- CW2410 Creamer (4¼" h.)
- CW2409 Sugar Bowl (2¼" h.)

CW2422 Ginger Jar (17" h.)

CW2421 Trumpet Vase (11¼" h.)

CW2424 Mug (4½" h.)

CW2417 Coaster (4¾" dia.)

CW2412 Large Round Box (4½" dia.)

CW2413 Small Round Box (2½" dia.)

Items not shown

CW2406 Demitasse Cup/Saucer

CW2415 Leaf Tray (10½" l.)



BLUE LACE

This versatile pattern with its delicate border was inspired by Chi'ng Dynasty (1644-1911) porcelain from China. Highlighted by bands of 22k gold, this elegant design makes a stunning presentation and coordinates beautifully with other services.

- S1650 Five Piece Place Setting
- S1651 Dinner Plate (10¼" dia.)
- S1652 Dessert Plate (8¼" dia.)
- S1653 Bread and Butter Plate (7" dia.)
- S1654 Teacup/Saucer
- S1655 Cream Soup and Saucer



Mottahedeh



BLUE LACE

This versatile pattern with its delicate border was inspired by Ch'ing Dynasty (1644-1911) porcelain from China. Highlighted by bands of 22k gold, this elegant design makes a stunning presentation and coordinates beautifully with other services.

- S1650 Five Piece Place Setting
- S1651 Dinner Plate (10¼" dia.)
- S1652 Dessert Plate (8½" dia.)
- S1653 Bread and Butter Plate (7" dia.)
- S1654 Teacup and Saucer (3½" dia.)

- S1705GL Lace Service Plate Gold (12" dia.)
- S1705B Lace Service Plate Blue (12" dia.)
- S1705BK Lace Service Plate Black (12" dia.)
- S1705G Lace Service Plate Green (12" dia.)
- S1705R Lace Service Plate Red (12" dia.)
- S1705P Lace Service Plate Plum (12" dia.)



Mottahedeh



BLUE LACE



- S1661 *Round Bowl (9" dia.)*
- S1676 *Platter (15" L)*
- S1677 *Pitcher (7¼" h.)*
- S2421 *Fluted Tray Large (9¼" x 11½")*
- S2420 *Fluted Tray Small (6½" x 8¼")*
- S1655 *Cream Soup and Saucer (4¾" dia.)*
- CW2424 *Pitcher (7¼" h.)*



IMPERIAL BLUE

Mottahedeh



BLUE DRAGON

In ancient China the dragon became the symbol for the emperor, bestowing good fortune and protection to the righteous. The period of the emperor K'ang Hsi (1622-1722) was one of the high points in the development of blue and white wares. This period inspired this classic design.

- | | | | |
|--------|------------------------------------|-------|--------------------------|
| S1740 | Five Piece Place Setting | S1748 | Oval Platter (13¾" l.) |
| S1741 | Dinner Plate (10¼" dia.) | S1746 | Bowl, Small (8" dia.) |
| S1742 | Dessert Plate (8½" dia.) | S1747 | Bowl, Large (9½" dia.) |
| S1742A | Dessert Plate w/ Dragon (8½" dia.) | S1770 | Shell Dish (8¼" dia.) |
| S1743 | Bread and Butter Plate (7" dia.) | S1749 | Service Plate (12" dia.) |
| S1744 | Tea Cup and Saucer (3½" dia.) | | |



Mottahedeh



FAMILLE VERTE

This graceful design, with its leaves, berries and butterflies, was derived directly from antique Chinese Palace porcelain. At a time when porcelain was valued because of its rarity, highly prized examples found their way to Europe, and into the hands of avid collectors. Often fitted with mounts of precious metal,

they became gifts fit for kings. Many porcelain pieces produced in China during the Kangxi Period (1662-1722) had famille verte decoration — painted in transparent enamel colors, predominantly in shades of green. Mottahedeh's group is true to the eighteenth century spirit of this pattern.

- Y1670 *Five Piece Place Setting*
- Y1671 *Dinner Plate (10" dia.)*
- Y1672 *Dessert Plate (8½" dia.)*
- Y1673 *Bread and Butter Plate (6¾" dia.)*
- Y1674 *Can Cup and Saucer (Cup 2¼" h.)*
- Y1723 *Covered Vegetable (12½" x 8"x 6½")*

Mottahedeh



FAMILLE VERTE

Y1681 *Tureen and Octagonal Platter*

(Tureen 4 qt., 12½" L.)

Y1681A *Octagonal Platter*

(12½" L.)

Y1675 *Rim Soup Plate (10" dia.)*

Y1679 *Large Bowl (8½" dia.)*

Y1677 *Coupe Dessert Plate*

(8¼" dia.)

Y1676 *Cereal Bowl (6½" dia.)*

Y1680 *Small Bowl (7½" dia.)*

Y1709 *Shell Dish (8¼" dia.)*

Y1704 *Small Tureen and Stand*

(Tureen 12 oz., 8"x 5½",
Stand 7¾"x 5¾")

Y1698 *Mug (4" h.)*

Y1696 *Porringer (6" L.)*

Y1714 *Rectangular Tray, Small*

(5½"x 4½")

Y1715 *Rectangular Tray, Large*

(7½"x 6")



Mottahedeh



FAMILLE VERTE

- Y1699 *Small Ginger Jar (8½" h.)* **1699c Lamp**
- Y1686 *Demitasse Cup and Saucer*
- Y1678 *Tea Cup and Saucer*
- Y1684 *Open Sugar/Dessert Bowl (4¾" dia.)*
- Y1683 *Coffeepot (9¾" h.)*
- Y1685 *Creamer (4½" h.)*
- Y1682 *Teapot (6½" h.)*

- Y1720 *Cookie Tray (10½" l. x 7½" w.)*
- Y1721 *Low Square Bowl (8½" x 8½")*

- Y1703 *Pitcher (7" h.)*
- Y1690 *Oval Tray (7½" x 5")*

- Y1705 *Chop Plate (13" dia.)*



Mottahedeh



FAMILLE VERTE

Y1697 Trumpet Vase (11" h.)

S1880 Five-lobed Cachepot (9¼" h., 12" dia.)

Y1708 Master Salt (4¼" l.)

Y1688 Fu Dog Jar (7½" dia., 9¾" h.)

Y1691 Four-lobed Cachepot (8¼" l., 4½" h.)



Mottahedeh



SACRED BIRD AND BUTTERFLY

The original of this magnificent Chinese export pattern may be found set in the dining room of Charleston's famed Nathaniel Russell House. Butterflies, a popular design in China, are often found as porcelain decoration or embroidered on robes. Perhaps the popularity of the butterfly comes, in part, from the fact that the Chinese word for butterfly, *tieh*, is a pun which expresses the wish that the owner might live to a ripe old age. Mottahedeh, in cooperation with Historic Charleston, offers an updated version of the well known Sacred Bird and Butterfly pattern. The decoration is more dense than the original Mottahedeh pattern and is true to the antique. The name reflects the many birds and butterflies featured in the design.

- HC600 *Five Piece Place Setting*
- HC601 *Dinner Plate (10" dia.)*
- HC602 *Dessert Plate (8½" dia.)*
- HC603 *Bread and Butter Plate (6¾" dia.)*
- HC604 *Teacup and Saucer (3¾" dia.)*



Mottahedeh

SACRED BIRD AND BUTTERFLY



HC628 *Large Square Bowl*
(9" x 9")

HC629 *Small Square Bowl*
(6½" x 6½")



HC627 *Oval Platter* (14")

HC613 *Scalloped Bowl* (10½" dia.)

HC614 *Lobed Cachepot* (8½" x 6½")



Mottahedeh

SACRED BIRD AND BUTTERFLY



- HC647 *Cake Plate (12¼" dia.)*
- HC617 *Fluted Dessert Bowl (5" dia.)*
- HC619 *Shang Vase (6" h.)*

- HC616 *Covered Box (2½" dia., 1" h.)*
- HC615 *Leaf Tray (6½" l., 4¼" w.)*

- HC646 *Crescent Salad Plate (8½" l.)*
- HC618 *Cream Soup (4¾" dia.)*



- HC631 *Mug (4¼" h.)*
- HC605 *Demitasse and Saucer (2½" h.)*
- HC692 *Tea Flask (4" w. x 5" h.)*
- HC632 *Master Salt (4¼" l.)*

Mottahedeh

SACRED BIRD AND BUTTERFLY



HC611 Tureen and Octagonal Platter (Tureen 12½" L., Platter 15" L.)



S17830 Wufu Cachepot (9¼" h., 12" dia.)



HC611A Octagonal Platter (15" L.)



HC633 Shell Dish (8¼" dia.)

HC634 Cookie Plate (10½" L.)




Mottahedeh



MANDARIN BOUQUET

A charming bouquet in a basket, adapted from an 18th-century Chinese export Hong bowl, is surrounded by the classic blue and white Fitzhugh border. The elements combine easily to create an elegant dinner service.

- W2120 *Five Piece Place Setting*
- W2100 *Dinner Plate (10¼" dia.)*
- W2101 *Dessert Plate (9¼" dia.)*
- W2102 *Bread and Butter Plate (8" dia.)*
- W2103 *Teacup/Saucer*
- W2111 *Fruit Saucer (6" dia.)*
- W2117 *Trumpet Vase (11¼" h.)* 



WINTERTHUR


Mottahedeh



MANDARIN BOUQUET

- W2113 *Demitasse Cup/Saucer* (2½" h.)
- W2114 *Cookie Plate* (10½" L.)
- W2304 *Small Box* (2½" dia.)
- W2105 *Leaf Dish* (7¾" L.)
- W2107 *Lobed Tray* (6¼" w.)
- W2104 *Square Bowl* (10¼" sq.)
- W2115 *Mug* (4¼" h.)
- W2109 *Platter* (13¾" L.)
- W2100B *Fitzhugh Border Dinner Plate* (10¼" dia.)



WINTERTHUR




Mottahedeh



CININNATI SERVICE

This is an exact reproduction of George Washington's most famous set of china, produced and decorated in Canton in 1784. It was brought to America on the first U.S. ship to enter the China Trade. Washington was the first President General of the Society of Cincinnatus, which was founded in 1783 to recognize the honorable service of French and American officers during the American Revolution.

- W1110 Five-piece Place Setting
- W1104 Dinner Plate (10¼" dia.)
- W1100 Dessert Plate (9¼" dia.)
- W1105 Bread and Butter (7¾" dia.)
- W1102 Cup and Saucer (cup 2¾" h.)
- W1106 Soup Plate (9¼" dia.) (not shown)



WINTERTHUR



- W1103 Leaf Tray (7¾" l.)
- W1107 Dessert Bowl (5" dia.)
- W1101 Square Bowl (10¼" dia.)



MANDARIN BOUQUET



W2112 Covered Vegetable (6½" h., 11" w.)



W2110 Salad Bowl (9" dia.)
W2108 Dessert Bowl (5" dia.)

Mottahedeh



GABRIEL COLLECTION

When the ancient Roman city of Pompeii was unearthed in the early eighteenth century, designers at the time revived classical motifs such as angels and laurel wreaths. Our trumpeting archangel Gabriel is adapted in porcelain from a rare pattern book dated 1777, now in the collection of Colonial Williamsburg.

CURRENT

- S2011 Festival Service Plate Red (12")
- CW2207 Dinner Plate (10" dia.)
- CW2204 Luncheon Plate (8½" dia.)
- CW2206 Mug (4½" h., 3" dia.)
- CW2202 Covered Box (3¾" dia.)
- CW2205 Coaster (4¾" dia.)



BLACK DISC

- S2014 Festival Service Plate (12")
- CW2507 Dinner Plate (10" dia.)
- CW2504 Luncheon Plate (8½" dia.)
- CW2506 Mug (4½" h., 3" dia.)
- CW2502 Covered Box (3¾" dia.)
- CW2505 Coaster (4¾" dia.)

BLUE DISC

- S2013 Festival Service Plate (12")
- CW2307 Dinner Plate (10" dia.)
- CW2304 Luncheon Plate (8½" dia.)
- CW2306 Mug (4½" h., 3" dia.)
- CW2302 Covered Box (3¾" dia.)
- CW2305 Coaster (4¾" dia.)

GREEN

- S2012 Festival Service Plate (12")
- CW2107 Dinner Plate (10" dia.)
- CW2104 Luncheon Plate (8½" dia.)
- CW2106 Mug (4½" h., 3" dia.)
- CW2102 Covered Box (3¾" dia.)
- CW2105 Coaster (4¾" dia.)

PLUM DISC

- S2015 Festival Service Plate (12")
- CW2707 Dinner Plate (10" dia.)
- CW2704 Luncheon Plate (8½" dia.)
- CW2706 Mug (4½" h., 3" dia.)
- CW2702 Covered Box (3¾" dia.)
- CW2705 Coaster (4¾" dia.)



Mottahedeh



THE DUKE OF GLOUCESTER

This extraordinary pattern, featuring twenty colors and 22k gold, is one of the finest manifestations of the Rococo style. The design incorporates colorful fruit and imaginary insects within a rim of green enamel and gold flecking. The dinner service was originally made for William Henry, Duke of Gloucester, circa 1770.

- CW1400 *Five Piece Place Setting*
- CW1440 *Dinner Plates, Set of 4 (10" dia.)*
- CW1460 *Dessert Plates, Set of 4 (8½" dia.)*
- CW1465 *Bread and Butter Plates, Set of 4 (7¼" dia.)*
- CW1470 *Cups and Saucers, Set of 4 (Cup 2¾" h.)*
- CW1524 *Coffeepot (52 oz., 10½" h.)*
- CW1525 *Teapot (40 oz., 7½" h.)*
- CW1529 *Sugar and Creamer Set (4¾" h. & 4½" h.)*
- CW1495 *Demitasse Cup/Saucer*



Mottahedeh



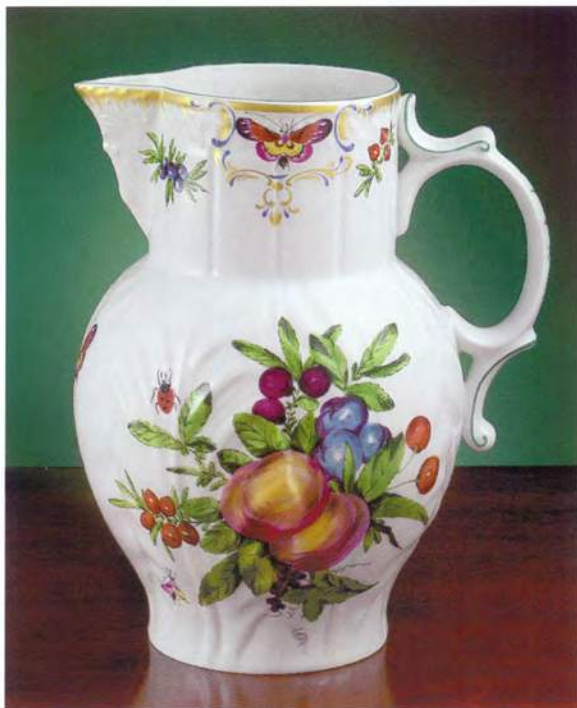
THE DUKE OF GLOUCESTER

The design shown are faithful to the antique originals.

- CW1440 *Dinner Plates, Set of 4*
(10" dia.)
- CW1480 *Rim Soup Plates, Set of 4*
(10" dia., not shown)
- CW1470 *Cups and Saucers, Set of 4*
- CW1450 *Octagonal Platter (11½" L)*
- CW1540 *Octagonal Platter (15" L)*
- CW1510 *Tureen and Oval Platter*
(Tureen 2 qt., (Tureen 2 qt., 8¼" w.)
- CW1520 *Oval Platter (12½" L)*



Mottahedeh



THE DUKE OF GLOUCESTER

Extend the use of Duke of Gloucester into more casual dining and home decoration. These lovely pieces add vibrant color and elegance to breakfast or any time of the day.

CW1490 Pitcher (64 oz., 9" h.)

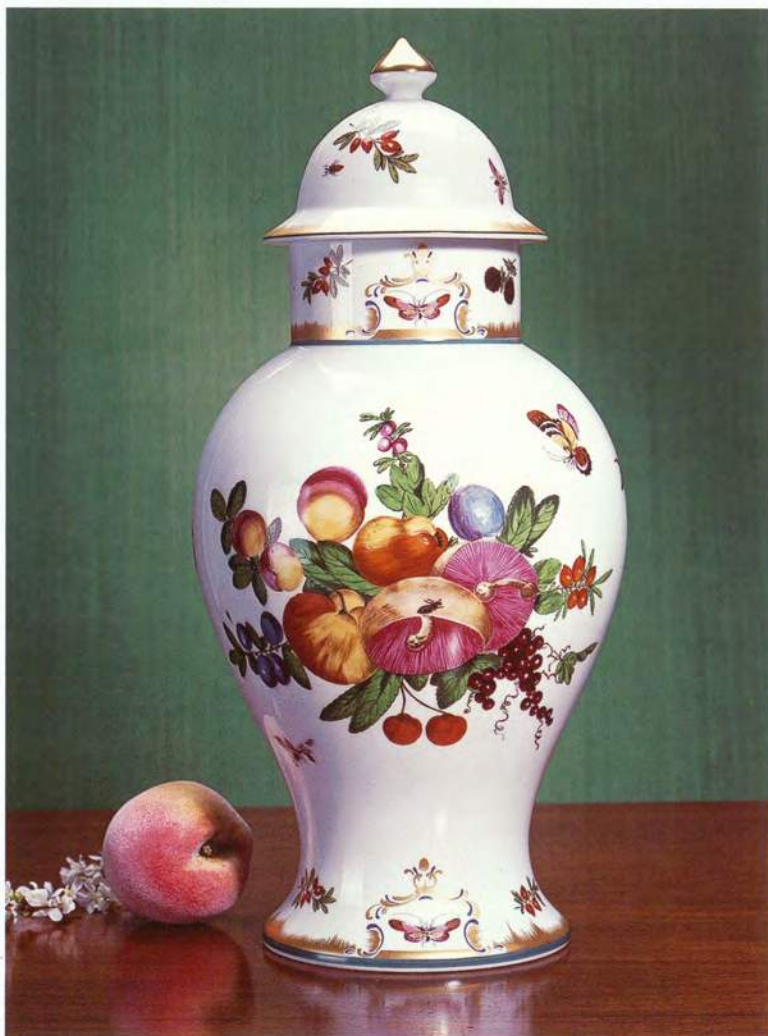
CW1523 Mug (4½" h.)

CW1475 Cereal Bowls, Set of 4 (7½" dia.)

CW1485 Dessert Bowl (4" dia.)

CW1591 Two Handled Vase (9" h.)

CW1592 Ginger Jar (16" h., 8" w.)



Mottahedeh

THE DUKE OF GLOUCESTER



CW1580 Salad Bowl (10" dia.)

CW1500 Shell Dish (8 1/4" dia.)

CW1550 Pair of Lobed Trays (6" x 5")

CW1560 Pot de Creme (3 1/4" h.)

CW1571 Small Round Box (2 1/4" dia.)

CW1572 Large Round Box (4 1/2" dia.)

CW1585 Oval Dish (11 3/4" x 9")



Mottahedeh



CHELSEA BIRD

Porcelain produced at Chelsea in the eighteenth century is regarded by many as the apex of English ceramic art. Among the most treasured pieces of Chelsea are those decorated in the workshop of James Giles with his birds of “distinctly disheveled appearance”. Our Chelsea Bird pattern has been adapted from Giles’ originals in the collection of Colonial Williamsburg.

CW2460 *Five Piece Place Setting*

CW2449 *Dinner Plates – Set of 4 (10" dia.)*

CW2448 *Cups and Saucers – Set of 4*

CW2451 *Cereal Bowls – Set of 4 (7¼" dia.)*

CW2440 *Dessert Plates – Set of 4 (8¼" dia.)*

CW2450 *Rim Soup Plates – Set of 4 (10" dia.)*

CW2452 *Two-Handled Vase (9" h.)*



Mottahedeh



CHELSEA BIRD

These plates, vases, shell dishes, trays and pitcher incorporate James Giles' exotic bird designs on shapes of the period. The original rare set of plates, from which this pattern was reproduced, was made at the Chelsea Porcelain Manufactory in England between 1758 and 1769.

CW2453 *Large Platter (14" x 11")*

CW2455 *Oval Dish (11½" x 9")*

CW2445 *Leaf Dish (12" l.)*

CW2446 *Leaf Dish (12" l.)*

CW2444 *Trumpet Vase (11" l.)*

CW2443 *Trumpet Vase (11" l.)*

CW2441 *Shell Dish (8¼" dia.)*

CW2442 *Shell Dish (8¼" dia.)*

CW2447 *Pitcher (9" h.)*

(Colonial Williamsburg adaptation)



Mottahedeh



PROSPERITY

George Washington had a deep affinity for stoneware and creamware and used it extensively at Mount Vernon. Salt-glazed fragments excavated from the grounds of Mount Vernon were replicated in great detail for this pattern. Salt glazed stoneware predates creamware and was popular by 1765. Guaranteed stainproof and is microwave and dishwasher safe.

- MV1600 Five Piece Place Setting
- MV1601 Dinner Plate (10¼" dia.)
- MV1602 Dessert Plates, set of 4 (8½" dia.)
- MV1603 Bread and Butter Plate (7" dia.)
- MV1604 Mug (3½" dia.) MV1604B Saucer
- MV1605 Rim Soup Plate (9¼" dia.)

George Washington's
MOUNT VERNON



Mottahedeh



PROSPERITY

MV1607 Salad Bowl, Large (9¾" dia.)

MV1608 Salad Bowl, Small (8½" dia.)

MV1612 Pot de Creme, Set of 4 (3¾" h.)

MV1610 Oval Platter (14½" l.)

MV1609 Service Plate (12½" dia.)

MV1606 Tureen

MV1610 Oval Platter (14½" l.)



George Washington's
MOUNT VERNON.

Mottahedeh



CHINOISE BLUE

This pattern is derived from 18th century Chinese Export porcelain. The elegant leaf and ribbon borders in gold, cobalt and rust create a subtle yet striking effect. This service is equally appropriate in a board room, a formal dinner setting or for a quiet evening at home.

- S1513 Round Bowl (8½" dia.)
- S1527 Oval Platter (14" L)

- S1520 Five Piece Place Setting
- S1521 Dinner Plate (10" dia.)
- S1522 Dessert Plate (8¼" dia.)
- S1523 Bread and Butter Plate (7" dia.)
- S1524 Can Cup and Saucer (Cup 2¼" h.)
- S1526 Demitasse Cup and Saucer (Cup 2" h.)
- S1512 Candlesticks, pair (6¾" h.)
- S1515 Large Cachepot (7½" h.)
- S1525 Rim Soup Plate (not shown)
- S1506 Large Dinner Plate (10¾" dia.) (not shown)

- S1507 Octagonal Tureen and Stand (Tureen 12½" L)
- S1507P Octagonal Platter (15" L)



Mottahedeh



CHINOISE BLUE

- S1531 Coffeepot (48oz., 9" h.)
- S1532 Teapot (40oz., 6½" h.)
- S1533 Sugar Bowl (4¼" h.)
- S1534 Creamer (3½" h.)

- S1528 Small Square Bowl (6½" sq.)
- S1529 Large Square Bowl (9" sq.)

- S1535 Monteith Cachepot (10½" L., 6" h.)

- S1540 Mug (4¼" h.)



Mottahedeh



CHINOISE BLUE

These delicate drawings are reproduced from 18th century patterns by Harolddt, the Master which originally served as an inspiration to Meissen painters for the elaborate decorations they painstakingly hand colored on porcelain.

S1514 Small Cachepot (6¼" h., 6¼" dia.)

S1510 Large Ginger Jar (15" h., 9" dia.)

S1515 Large Cachepot (7½" h., 7" dia.)

S1517 Large Square Tray (6¾" h., 6¾" w.)

S1516 Small Square Tray (5" h., 5" w.)

S1511 Trumpet Vase (11¼" h.) *as a Lamp*



Mottahedeh

CHINOISE BLUE

- S1546 Crescent Salad Plate
- S1508 Gravy Boat and Stand (7" l.)
- S1505 Oval Tray (same as stand without well)
- S1547 Cake Plate
- S1536 Pitcher (7¼" h.)
- S1509 Chop Plate (13" dia.)



Mottahedeh



CHINOISE BLUE

S1531 Coffeepot (48 oz., 9" h.)

S1532 Teapot (40 oz., 6½" h.)

S1533 Sugar Bowl (4¾" h.)

S1534 Creamer (3½" h.)

S1528 Small Square Bowl (6½" x 6½")

S1529 Large Square Bowl (9" x 9")

S1535 Monteith Cachepot (10½" L, x 6" h.)



Mottahedeh



GOLDEN BUTTERFLY

The original of this distinguished dinner service was made in China for the East India Company during the reign of the Qianlong Emperor (1736-1795). Glowing against a starry sky of cobalt blue are golden butterflies signifying happiness. What more auspicious setting for a happy meal!

- M27 *Five Piece Place Setting*
- M29 *Dinner Plate (10" dia.)*
- M29C *Dessert Plate (8½" dia.)*
- M29B *Bread and Butter (7" dia.)*
- M30 *Cup and Saucer*

Mottahedeh



GOLDEN BUTTERFLY

- M34 Sugar (5" h.)
- M35 Creamer (3¼" h.)
- M32 Coffeepot (9" h.)
- M33 Teapot (6" h.)

- M36A Square Bowl (10" dia.)
- M36 Round Bowl (9½" dia.)

- M31B Tureen only (4 qt.)
- M31A Platter (16⅞" w.)
- M29A Rim Soup Plate (10" dia.)
- M37 Master Salt (4" w.)



Mottahedeh



PALMA

Palma is an exact reproduction of a design, circa 1840, by Fedor Solntsev, the great European art historian who painted interiors for cathedrals and designed much of the Kremlin under the patronage of Tsar Nicolas I. The original Solntsev design incorporates the elements of a plate owned by Tsar Alexei Mikailovich, existing in 1667, inspired by the domes of magnificent mosques in Constantinople. The center of the plate is reminiscent of Celtic patterns. Truly universal in its theme, this historic pattern is a mark of excellent design. Available as a five piece place setting and presentation plate all featuring three different golds, rich navy, green, magenta and a touch of ruby.

- S600 *Five Piece Place Setting*
- S601 *Dinner Plate (10¼" dia.)*
- S602 *Dessert Plate (8½" dia.)*
- S602A *Simple Dessert Plate (8½" dia.)*
- S603 *Bread and Butter Plate (7" dia.)*
- S604 *Tea Cup and Saucer (3½" dia.)*



Mottahedeh



PALMA

- S609 *Palma Wave Service Plate (12" dia.)*
- S603A *Palma Wave Bread and Butter Plate (7" dia.)*
- S610 *Palma Service Plate (12" dia.)*
- S611 *Crescent Salad Plate (8¼" l. x 4¼" w.)*



Mottahedeh



BLUE SHÒU

Inspired by design elements in our iconic Blue Canton pattern, these elements have been merged onto sleek modern shapes. The word Shòu (pronounced “show”) is the Chinese word for longevity. The evergreen pine tree appears as a key design element throughout, symbolizing endurance and long life, as it endures the long winter. Blue Shòu is produced in classic cobalt on bright white high fired porcelain. This will surely become a classic in its own right.

- S100 *Five Piece Place Setting*
- S101 *Dinner Plate (11" dia.)*
- S102 *Dessert Plate (9" dia.)*
- S103 *Bread and Butter Plate (6½" dia.)*
- S104 *Tea Cup and Saucer (4" dia.)*
- S115 *Platter, Large (16½" l.)*
- S114 *Platter, Small (13¾" l.)*



Mottahedeh



BLUE SHÒU

- S108 *Mug (4½" h.)*
- S110 *Demitasse Cup and Saucer (3½" h.)*
- S104 *Tea Cup and Saucer (4" dia.)*
- S109 *Breakfast Cup and Saucer (5" dia.)*
- S105 *Cereal Bowl (5½" dia.)*

- S112 *Serving Bowl, Large (11¾" dia.)*
- S111 *Serving Bowl, Small (8¾" dia.)*

- S107 *Service Plate (12¾" dia.)*
- S106 *Rim Soup Plate (10" dia.)*
- S113 *Pasta Bowl (11" dia.)*



Mottahedeh



VIRGINIA BLUE

Inspired by a Chinese export plate in Colonial Williamsburg's collection, in its day this pattern was called "china of the most fashionable sort" by Robert Beverly. Similar wares were in use on a Tidewater Virginia plantation at the time of the American Revolution. This version is refreshed with a pearlized ecru background and the original cobalt blue has been updated to brilliant periwinkle blue, giving a lacy and gentle effect. Microwave and dishwasher safe.

- CW3600 *Five Piece Place Setting*
- CW3601 *Dinner Plate (10¼" dia.)*
- CW3602 *Dessert Plate (7½" dia.)*
- CW3603 *Bread and Butter Plate, plain center (7" dia.)*
- CW3603A *Bread and Butter Plate, design center (7" dia.)*
- CW3604 *Tea Cup and Saucer*



Mottahedeh



VIRGINIA BLUE

- CW3606 Coupe Soup (7½" dia.)
- CW3609 Oval Platter (15" l., 11¼" w.)
- CW3608 Oval Serving Dish (11½" l., 8" w.)
- CW3631 Mug (4¼" h.)
- CW3607 Salad Bowl (8¾" dia.)



Mottahedeh



GREEN LACE

- S1550 *Five Piece Place Setting*
- S1551 *Dinner Plate (10 ¼" dia)*
- S1552 *Dessert Plate (8 ½" dia)*
- S1553 *Bread and Butter Plate (7" dia)*
- S1554 *Teacup and Saucer (2 ¾" h.)*



LACE SERVICE PLATES

- S1705B *Cobalt Blue Lace Service Plate (12" dia)*
- S1705GL *Gold Lace Service Plate (12" dia)*
- S1705BR *Chocolate Lace Service Plate (12" dia)*
- S1705G *Green Lace Service Plate (12" dia)*
- S1705CF *Cornflower Lace Service Plate (12" dia)*

- S1705GA *Apple Green lace Service Plate (12" dia)*
- S1705P *Plum Lace Service Plate (12" dia)*
- S1705BK *Black Lace Service Plate (12" dia)*
- S1705R *Red Lace Service Plate (12" dia)*
- S1705T *Turquoise Lace Service Plate (12" dia)*



Mottahedeh



APPLE GREEN LACE

CORNFLOWER LACE

The very successful Blue Lace pattern has been interpreted once again for 5 piece place settings in Green Apple and Cornflower Blue. Like Blue Lace these colorways can be mixed and matched with more decorative patterns. The delicate border was inspired by Ch'ing Dynasty (1644 - 1911) porcelain from China and is highlighted by bands of 22 karat gold.

- S1350 *Apple Five Piece Place Setting*
- S1351 *Apple Dinner Plate (10 1/4" dia)*
- S1352 *Apple Dessert Plate (8 1/2" dia)*
- S1352A *Dessert Plate with Butterfly Center*
- S1353 *Apple Bread & Butter Plate (7" dia)*
- S1354 *Apple Cup & Saucer (2 3/4" h.)*



- S1450 *Cornflower Five Piece Place Setting*
- S1451 *Cornflower Dinner Plate (10 1/4" dia)*
- S1452 *Cornflower Dessert Plate (8 1/2" dia)*
- S1452A *Dessert Plate with Butterfly Center*
- S1453 *Cornflower Bread & Butter Plate (7" dia)*
- S1454 *Cornflower Cup & Saucer (2 3/4" h.)*



Mottahedeh



BUTTERFLY LACE DESSERT PLATES

The butterfly motif, an original design, has been rendered to include the entire rainbow of colors, making this plate a lovely compliment to a broad range of patterns and colors. Choose the Gold Teardrop border or mix and match with the pastel shades of Apple Green, Cornflower and Green Lace. Banding is hand painted in gold.

- | | | |
|----------|---|------------|
| S1252A | Golden Teardrop Butterfly Dessert Plate | (8½" dia.) |
| S1252AGB | Golden Teardrop Butterfly Dessert Plate, Boxed Set of Four | |
| S1352A | Apple Green Lace Butterfly Dessert Plate | (8½" dia.) |
| S1352AGB | Apple Green Lace Butterfly Dessert Plate, Boxed Set of Four | |
| S1452A | Cornflower Lace Butterfly Dessert Plate | (8½" dia.) |
| S1452AGB | Cornflower Lace Butterfly Dessert Plate, Boxed Set of Four | |
| S1552A | Green Lace Butterfly Dessert Plate | (8½" dia.) |
| S1552AGB | Green Lace Butterfly Dessert Plate, Boxed Set of Four | |
| S1252ALB | Assorted, (one each of above) Boxed Set of Four | |



Dessert plates are available gift boxed as sets of four and tied with a satin ribbon.

LACE MUGS

Microwave, dishwasher and oven safe.

- | | | | |
|-------|-------------------------------|-------|------------------------------|
| S1657 | Cobalt Blue Lace Mug (4¼" h.) | S1457 | Cornflower Lace Mug (4¼" h.) |
| S1357 | Apple Green Lace Mug (4¼" h.) | S1557 | Green Lace Mug (4¼" h.) |



Mottahedeh



CORNFLOWER LACE

S1456	Cornflower Lace Rim Soup Plate	9"
S1457	Cornflower Lace Mug	4.25"
S1458	Cornflower Lace Dessert Bowl	4.75"
S1461	Cornflower Lace Round Bowl	9"
S1476	Cornflower Lace Oval Platter	15"
S1477	Cornflower Lace Medium 12 Sided Tray	6.5" x 8.25"
S1478	Cornflower Lace Large 12 Sided Tray	9.25" x 11.5"



APPLE GREEN LACE

S1356	Apple Green Lace Rim Soup Plate	9"
S1357	Apple Green Lace Mug	4.25"
S1358	Apple Green Lace Dessert Bowl	4.75"
S1361	Apple Green Lace Round Bowl	9"
S1376	Apple Green Lace Oval Platter	15"
S1377	Apple Green Lace Medium Fluted Tray	6.5" x 8.25"
S1378	Apple Green Lace Large Fluted Tray	9.25" x 11.5" x 8.5"



GREEN LACE

S1556	Green Lace Rim Soup Plate	9"
S1557	Green Lace Mug	4.25"
S1558	Green Lace Dessert Bowl	4.75"
S1561	Green Lace Round Bowl	9"
S1576	Green Lace Oval Platter	15"
S1577	Green Lace Medium Fluted Tray	6.5" x 8.25"
S1578	Green Lace Large 12 Sided Tray 9.25	9.25" x 11.5"

Mottahedeh



PINK LACE

- S1250 5 Piece Place Setting
- S1251 Dinner Plate (10 1/4" dia.)
- S1252 Dessert Plate (8 1/2" dia.)
- S1253 Bread & Butter Plate (7" dia.)

- S1256 Rim Soup (9" dia.)
- S1257 Mug (4 1/4" h.)
- S1261 Round Bowl (9" dia.)
- S1276 Oval Platter (15" l.)



Mottahedeh



LACE TEA FOR TWO

The perfect gift for a newly wed couple or you and your significant other. The cups, saucers, teapot and a teabag holder stack up to be stowed in a cabinet or displayed on a sideboard. The gift box is perfect for shipping, as it has been designed to cradle the teaset and also may be displayed. Available in four colors.

S1379 *Apple Green Lace Tea for Two Boxed Set*

S1479 *Cornflower Lace Tea for Two Boxed Set*

S1579 *Green Lace Tea for Two Boxed Set*

S1679 *Cobalt Blue Lace Tea for Two Boxed Set*



Mottahedeh



PEACOCK

From early Christian times the peacock has symbolized immortality. It has long been associated with royalty. The luxuriant feathers painted in cobalt, green, gold and russet flow on a surface of shimmering watercolors.

- S2700 *Peacock Four Piece Place Setting*
- S2701 *Dinner Plate (10 3/4" dia.)*
- S2702 *Dessert Plates, set of 4 (8 1/2" dia.)*
- S2703 *Bread and Butter Plate (6 3/4" dia.)*
- S2731 *Mug (4 1/4" h.)*

LACE COUP CUPS & SAUCERS

- S1379CS *Apple Green (4" dia.)*
- S1479CS *Green (4" dia.)*
- S1579CS *Cornflower (4" dia.)*
- S1679CS *Blue (4" dia.)*

LACE DESSERT BOWLS

- S1258 *Pink (4 1/2" dia.)*
- S1358 *Apple Green (4 1/2" dia.)*
- S1458 *Green (4 1/2" dia.)*
- S1558 *Cornflower (4 1/2" dia.)*
- S1658 *Blue (4 1/2" dia.)*



Mottahedeh



CHELSEA FEATHER GOLD

Chelsea Feather with its delicate gold feathering and scalloped shoulder harks back to the Chelsea Manufactory of London circa the late 1700s. Bright white porcelain edged in 22K gold.

- S5000 *Four Piece Place Setting*
- S5001 *Dinner Plate (10" dia.)*
- S5002 *Dessert Plates, set of 4 (8½" dia.)*
- S5003 *Bread and Butter Plate (6¾" dia.)*
- S5008 *Mug (4 1/4" h.)*

GOLD LATTICE

- S5101 *Dinner Plate (10" dia.)*

GOLD ARROWHEAD

- S5201 *Dinner Plate (10" dia.)*

Mottahedeh



EMMELINE

Emmeline is a blend of modern and old world design. The blue and white floral motifs were reproduced from Chinese Export porcelain circa 1755, a new look for the factories. Drawing books were sent to China to instruct artists in European decoration to accommodate the changing tastes of the West. One French merchant wrote "Send no more dragons, but let us have flowers instead". Emmeline combines a new modern white plate with eighteenth century floral motifs. Microwave and Dishwasher safe.

S3000 *Five Piece Place Setting*
S3001 *Dinner Plate (10 1/4" d.)*
S3002 *Desert Plate (8 1/2" d.)*

S3003 *Bread & Butter Plate (7")*
S3004 *Tea cup & Saucer (2 3/4" h.)*

Mottahedeh



- S3037 Large Platter (15" l.)
- S3056 Rim Soup Plate (9" dia.)
- S3058 Dessert Bowl (4 1/4" dia.)
- S3031 Mug (4 1/4" h.)



Mottahedeh



INDIGO WAVE

Merchant sailors from the *Companie Des Indes* (East India Company) dominated trade with the Orient in the 17th and 18th centuries. Their sailing ships carried cargo from the fabled East including rare porcelains sought after by kings and connoisseurs in Europe. One such piece, an exquisite porcelain plate made for a Portuguese noble, inspired our Indigo Wave. Enriched with 22k gold, the design in deep cobalt blue is typical of the most prized of Chinese export porcelains.

- S900 *Five Piece Place Setting*
- S901 *Dinner Plate (10¼" dia.)*
- S902 *Dessert Plate (8½" dia.)*
- S903 *Bread and Butter Plate (6¾" dia.)*
- S904 *Tea Cup and Saucer (3¾" dia.)*
- S905 *Rim Soup Plate (9" dia.)*

Mottahedeh



INDIGO WAVE

- S906E Platter with Eagle (13¾" L)
- S906 Platter (13¾" L)



- S910E Square Canape Plate with Eagle (8" x 8")
- S910 Square Canape (8" x 8")
- S907 Large Square Bowl (9" x 9")
- S908 Small Square Bowl (6½" x 6½")
- S909 Gravy Boat and Stand (7" L)



Mottahedeh



INDIGO WAVE

S912 Octagonal Tureen (12½" L) and Platter (15" L)
S913 Covered Vegetable (12½" x 8" x 6½" h.)

S912P Platter (15" L)

S914 Chop Plate (13" dia.)

S911E Mug with Eagle (4¼" h.)

S915 Demitasse Cup and Saucer (2½" h.)

S911 Mug (4¼" h.)



Mottahedeh



SYLVANAE

Sylvanae is the Latin word for Goddesses of the Forest. An apt name for this beguiling woodland scene, an adaptation of a Zsolnay Manufactory design produced in the late 1800's in Pecs Hungary. This swirling natural motif features exotic birds, and many colored flora intertwined with foliage, all on generously sized porcelain plates. Mix this with Mottahedeh's Lace patterned accessories in colors of Cornflower, Cobalt, Green, Apple and Pink for a stunningly beautiful table or buffet. Alternatively, place the vibrant dessert plate on a simple border white or colored plate for a very colorful effect.

- S3100 *Five Piece Place Setting*
- S3101 *Dinner Plate (11" dia.)*
- S3102 *Dessert Plates, set of 4 (9" dia.)*
- S3103 *Bread and Butter Plate (6½" dia.)*
- S3104 *Teacup and Saucer (4" dia.)*

Mottahedeh



BARGELLO

This charming pattern has a contemporary vibrancy and versatility that belies its antique origins. The Bargello dinnerware by Mottahedeh is adapted from English porcelain, circa 1810. Like the needlework for which it is named, it combines random dashes of red, green, blue, yellow, orange and magenta in a geometric patchwork enhanced by 22 carat gold lines. It is reminiscent of contemporary Ikat, Indonesian, style designs.

S4101 Dinner Plate (10 1/2" dia.)

S4102 Dessert Plate (8 1/2" dia.)

Mottahedeh



TONY
DUQUETTE

STARBURST MEDALLION

Tony Duquette, an American design icon, was known for his lavish Metro Goldwyn Mayer sets and costume designs. He later became the Beverly Hills interior designer to many Hollywood celebrities. The Starburst Medallion is our rendering of dinnerware designs conceived on paper as faceted stone plates by Duquette (see the Service Plates, next page).



Malachite

- TD700 *Malachite Four Piece Place Setting*
- TD701 *Malachite Dinner Plate (10" dia.)*
- TD702 *Malachite Dessert Plate (8" dia.)*
- TD704 *Malachite Cup and Saucer (cup 3¼" dia.)*



Lapis

- TD900 *Lapis Four Piece Place Setting*
- TD901 *Lapis Dinner Plate (10" dia.)*
- TD902 *Lapis Dessert Plate (8" dia.)*
- TD904 *Lapis Cup and Saucer (cup 3¼" dia.)*



Red Tortoise

- TD800 *Red Tortoise Four Piece Place Setting*
- TD801 *Red Tortoise Dinner Plate (10" dia.)*
- TD802 *Red Tortoise Dessert Plate (8" dia.)*
- TD804 *Red Tortoise Cup and Saucer (cup 3¼" dia.)*

Mottahedeh



TONY
DUQUETTE

STARBURST MEDALLION

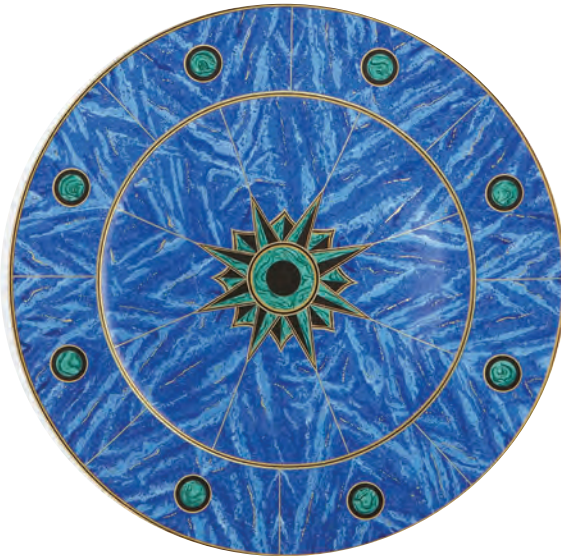
Tony Duquette, an American design icon of Beverly Hills, sketched these service plates as one of his many tableware ideas. The faux painting is whimsical, but the fine geometric gold lines give the design a serious and powerful edge.



TD201 *Malachite Service Plate* (12" dia.)

TD203 *Lapis Service Plate* (12" dia.)

TD202 *Red Tortoise Service Plate* (12" dia.)



Malachite



Lapis



Red Tortoise

TD210 *Malachite Canape Plate*
(5½" dia.)

TD212 *Lapis Canape Plate*
(5½" dia.)

TD211 *Red Tortoise Canape Plate*
(5½" dia.)

Mottahedeh



BARRIERA CORALLINA

This special pattern features ten-faceted plates with a necklace of raised and hand painted coral on the shoulder. The design was taken from Tony Duquette's sketch book where he designed many pieces of a coral dinner service, all with a watery theme. The generous cup features a coral handle and coral encircled foot. All items are painted to order.

- TD100 *Barriera Corallina Red Five Piece Place Setting*
- TD101 *Barriera Corallina Red Dinner Plate* (11¼" dia.)
- TD102 *Barriera Corallina Red Dessert Plate* (8¾" dia.)
- TD103 *Barriera Corallina Red Bread and Butter Plate* (7" dia.)
- TD104 *Barriera Corallina Red Cup and Saucer* (Cup 4" dia.)
- TD110 *Barriera Corallina Red Octagonal Platter, Large* (15" l. x 12" w.)



ECLIPSE

These magnificent service plates frame the dinner service beautifully.

- S1011 *Eclipse Service Plate Red* (13" dia.)
- S1012 *Eclipse Service Plate Black* (13" dia.)

Mottahedeh



BARRIERA CORALLINA

Barriera Corallina in red may also be ordered in 22 carat gold or true platinum. Each plate is hand painted for a sparkling effect. Special order.



TONY
DUQUETTE



GOLD

- TD500 *Barriera Corallina Gold Five Piece Place Setting*
- TD501 *Barriera Corallina Gold Dinner Plate* (11¼" dia.)
- TD502 *Barriera Corallina Gold Dessert Plate* (8¾" dia.)
- TD503 *Barriera Corallina Gold Bread and Butter Plate* (7" dia.)
- TD504 *Barriera Corallina Gold Cup and Saucer* (Cup 4" dia.)
- TD510 *Barriera Corallina Gold Octagonal Platter, Large* (15" l. x 12" w.)



PLATINUM

- TD600 *Barriera Corallina Platinum Five Piece Place Setting*
- TD601 *Barriera Corallina Platinum Dinner Plate* (11¼" dia.)
- TD602 *Barriera Corallina Platinum Dessert Plate* (8¾" dia.)
- TD603 *Barriera Corallina Platinum Bread and Butter Plate* (7" dia.)
- TD604 *Barriera Corallina Platinum Cup and Saucer* (Cup 4" dia.)
- TD610 *Barriera Corallina Platinum Octagonal Platter, Large* (15" l. x 12" w.)

Mottahedeh



SERVICE PLATES

S107 *Blue Shòu (12¾" dia.)*

S1622 *Blue Canton Contempo (12¾" dia.)*

S2379 *Tobacco Leaf Contempo (12¾" dia.)*

S1749 *Blue Dragon (12" dia.)*

S1726 *Famille Verte Contempo (12¾" dia.)*

S2378 *Tobacco Leaf (12¼" dia.)*

S945 *Indigo Wave (12½" dia.)*

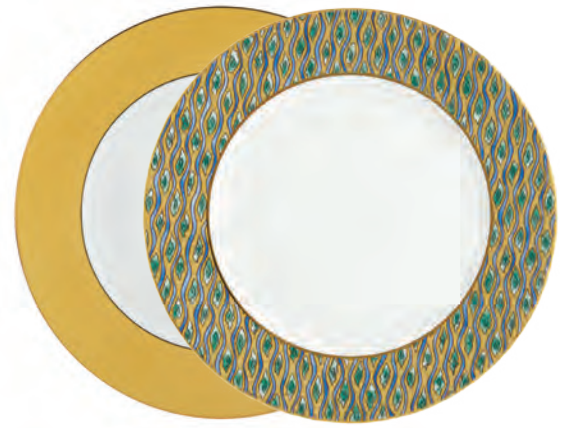


S1706B *Blue Labyrinth (12" dia.)*

S1706G *Gold Labyrinth (12" dia.)*

S610 *Palma (12" dia.)*

S609 *Palma Wave (12" dia.)*



Mottahedeh

SERVICE PLATES



MV1609 Prosperity (13" dia.)

S1545 Chinoise Blue (12¼" dia.)

S4032 Longton Hall (13" dia.)

S2011 Red Festival (12" dia.)

S2012 Green Festival (12" dia.)

S2013 Blue Festival (12" dia.)

S2014 Black Festival (12" dia.)

S2017 Cinnabar Festival (12" dia.)



LACE SERVICE PLATES

S1705B Cobalt Blue (12" dia.)

S1705GL Gold (12" dia.)

S1705BR Chocolate (12" dia.)

S1705G Green (12" dia.)

S1705CF Cornflower (12" dia.)



S1705GA Apple Green (12" dia.)

S1705P Plum (12" dia.)

S1705BK Black (12" dia.)

S1705R Red (12" dia.)

S1705T Turquoise (12" dia.)

Mottahedeh



LEAF

We did our homework and looked into some of the most prized glazes of early Korean and Chinese periods to express the classics. The soft impression of a filigree leaf is seen on each plate. It is enhanced by a silken glaze that has an ombre effect, moving from dark to light at the edges. This is a mark of excellence in glazing. Leaf is created in four color ways, White Silk, Blue Haze, Topaz and Agate. The plates, bowls and mugs are thin, yet durable. Leaf tableware lives well between casual and more formal occasions. Leaf patterned tableware is dishwasher and microwave safe. Choose one color or mix them for an intriguing table.



Mottahedeh

WHITE SILK



MS1001 Dinner Plate (10 1/2" dia.)



MS1002 Dessert Plate (9 1/2" dia.)



MS1004 Mug (4 1/4" h.)



MS1006 Pasta Bowl (10" dia.)



MS1007 Cereal Bowl (6 1/4" dia.)



MS1008 Fruit Bowl (4 3/4" dia.)



MS1009 Serving Bowl (10 1/2" dia.)

BLUE HAZE



MS2001 Dinner Plate (10 1/2" dia.)



MS2002 Dessert Plate (9 1/2" dia.)



MS2004 Mug (4 1/4" h.)



MS2006 Pasta Bowl (10" dia.)



MS2007 Cereal Bowl (6 1/4" dia.)



MS2008 Fruit Bowl (4 3/4" dia.)



MS2009 Serving Bowl (10 1/2" dia.)

TOPAZ



MS3001 Dinner Plate (10 1/2" dia.)



MS3002 Dessert Plate (9 1/2" dia.)



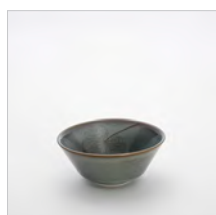
MS3004 Mug (4 1/4" h.)



MS3006 Pasta Bowl (10" dia.)



MS3007 Cereal Bowl (6 1/4" dia.)



MS3008 Fruit Bowl (4 3/4" dia.)



MS3009 Serving Bowl (10 1/2" dia.)

AGATE



MS4001 Dinner Plate (10 1/2" dia.)



MS4002 Dessert Plate (9 1/2" dia.)



MS4004 Mug (4 1/4" h.)



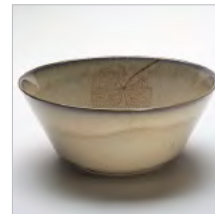
MS4006 Pasta Bowl (10" dia.)



MS4007 Cereal Bowl (6 1/4" dia.)



MS4008 Fruit Bowl (4 3/4" dia.)



MS4009 Serving Bowl (10 1/2" dia.)

Mottahedeh



TIN PLATE PICNIC SETS



These tin plate picnic sets will add style to any outdoor gathering. Use them without worrying about leaks or bending. Pack them back up into their tin box for easy clean up at home. All set include four tin plates (except for the American ships which is a set of six) and come packed in a reusable tin box.

- T7200 Turkish Garden set of 4 (10 1/4" dia.)
other sets pictured on next page
- T5200 Turkish Garden set of 4 (10 1/4" dia.)
- T1640 Ming set of 4 (10 1/4" dia.)
- T1981 American Ships set of 6 (10 1/4" dia.)
- T5200 Lowestoft Rose set of 4 (10 1/4" dia.)
- T6200 Blue Dragon set of 4 (10 1/4" dia.)
- T8200 Lotus Blossom set of 4 (10 1/4" dia.)
- T9200 Blue Pagoda set of 4 (10 1/4" dia.)

Mottahedeh



T1640 Ming set of 4 (10 1/4" dia.)



T1981 American Ships set of 6 (10 1/4" dia.)



T5200 Lowestoft Rose set of 4 (10 1/4" dia.)



T6200 Blue Dragon set of 4 (10 1/4" dia.)



T8200 Lotus Blossom set of 4 (10 1/4" dia.)



T9200 Blue Pagoda set of 4 (10 1/4" dia.)

Mottahedeh



Giftware

Mottahedeh



This extraordinary bowl is a reproduction of a Chinese export piece circa 1800 in the collection of the Winterthur Museum. The decoration on this bowl depicts the thirteen "Hong" merchants representing thirteen foreign countries (one being the United States) who handled official trade between China and the West in the late 18th century. Located on the Pearl River in Canton, these factories, or "Hong", served Western traders as warehouses, offices and residences. This trading system was established in 1757 by the Manchu Dynasty to eliminate contact between the Chinese people and "foreign devils."

W8490 Hong Bowl with Stand (11¼" dia., 6½"h.)

WINTERTHUR



Famille Rose was a style of Chinese porcelain that featured fabulous pinks, rust, greens and blues. This large punch bowl is derived from an export dinner service made in 1775. It depicts cascading flowers and elegant gold scrollwork. It is a magnificent piece for a large table, a sideboard or for presentation.

S1724 Famille Rose Bowl (14¾" dia., 6¼"h.)

Inside Center of Bowl



Reproduced from a Chinese Export porcelain punchbowl, circa 1760 - 1775. The original is located in the Bassett Hall house, formerly a Rockefeller residence at Colonial Williamsburg.

CW6000 Bassett Hall Bowl (14½" dia., 6"h.)

Inside Center of Bowl



Mottahedeh



CHINESE EXPORT



S2991 Butterfly Small Platter (10½"L.)
S2993 Butterfly Shell Dish (8"x 8")

S2990 Mallard Shell Dish (8"x 8")

S2982 Eagle Small Platter (10½"L.)
~~S2997~~ Eagle Shell Dish (8"x 8")

52984



CH' IEN LUNG BOWL

S1720 Ch'ien Lung Bowl (13" dia.)



Disk
S4164 Majolica Fan Bowl (12¼" dia., 7" h.)



HC240 Bamboo Open Vase (8¾" h.)
HC241 Bamboo Covered Jar (10" h.)

Mottahedeh



WUFU BOWL

The Peach Bowl is an exact reproduction from China's Yongzheng period (1723-35) which incorporates pink and opaque white enamels. The bowl features eight peaches which are symbolic of longevity and five bats which represent the traditional blessings of wealth, health, love of virtue, old age, and a natural death.

S1731 WUFU Peach Bowl (13" dia.)



LOWESTOFT GARDEN

This updated version of our once popular and lavish design, called Lowestoft Rose, shows delicate flowers and engraved 22 carat gold borders. Perfect for a special dessert. May be gift boxed.

S2472 Lowestoft Garden Dessert Plate Set of Four (8½" dia.)
 S2474 Lowestoft Garden Cup and Saucer Set of Four (Cup 2¾" dia.)
 S2472A Lowestoft Garden Dessert Plate (8½" dia.)
 S2474CS Lowestoft Garden Cup and Saucer (Cup 2¾" dia.)



PROSPERITY TUREEN

A fine adaptation of President George Washington's personal soup tureen. The style is English Staffordshire, the details and scale are authentic. The original was stoneware but ours is made of hard French porcelain. Heat resistant, dishwasher safe and guaranteed stain proof. Licensed by Mount Vernon Ladies Society.

MV1606 Prosperity Tureen (9½" h. x 10¼" w. x 13½" l.)
 MV1610 Prosperity Oval Platter (14½" dia.)

Mottahedeh



BLUE CANTON

CONTEMPO SERVICE PLATE

One of our oldest and most loved patterns finds new life in this modern adaptation.

S1622 *Blue Canton Contempo* (13" dia.)

SHANG MUG

HC148 *Blue Canton Shang Mug* (4" h.)

ROUND AND SQUARE BOXES

HC198 *Blue Canton Square Box* (3¾" dia.)

HC197 *Blue Canton Round Box* (3¾" dia.)



TOBACCO LEAF

CONTEMPO SERVICE PLATE

Tobacco Leaf is a design whose style has been represented at least eleven different ways. Produced in 18th Century China, it is a profusion of 27 colors and high fire cobalt with gold. This updated version is bold. Our design is the most recognized Tobacco Leaf style today.

S2379 *Tobacco Leaf Contempo* (13" dia.)



ALHAMBRA CANAPE PLATES

This intricate calligraphic design was inspired by a small antique plate that evokes the Moorish style of Alhambra. The playful line work balances nicely with the rich nature backgrounds of Burling Walnut, Curly Pine, Sandstone and Oriental Blue. These petite plates are perfect stacked out at parties for appetizers, your favorite cookie or even as a coaster for your cocktail.

S8000 *Alhambra Canape Plates Assorted Set of Four* (5½" dia.)

S8001S *Alhambra Canape Plates Burling Walnut Set of Four* (5½" dia.)

S8002S *Alhambra Canape Plates Curly Pine Set of Four* (5½" dia.)

S8003S *Alhambra Canape Plates Sandstone Set of Four* (5½" dia.)

S8004S *Alhambra Canape Plates Oriental Blue Set of Four* (5½" dia.)

Also sold individually, use item# without S.

Mottahedeh



NT2419 *Punch Bowl (15½" dia.), from the Historic Natchez Collection Adapted from a Chinese bowl, circa 1795, at Cliveden, a property of the National Trust for Historic Preservation.*

S2974 *Blue and Gold Monteith Planter (14¾" dia., 10½"h.) Adapted from a Chinese porcelain monteith, circa 1720.*

S8450 *Blue and White Covered Meat Platter (15½" x 12" x 9") Adapted from a Chinese Export covered platter, circa 1740*
 S8450P *Blue and White Platter only*

Y8400 *Blue and White Monteith Bowl (12¾" dia., 6½"h.) Reproduction of a Metropolitan Museum of Art original.*



Mottahedeh



Y2955 Phoenix Bowl (9¼" dia.) *DSC*
 Reproduction of a Metropolitan Museum of Art original

Y1625 Blue and White Square Bowl (8½" sq.)
 Reproduction of a Metropolitan Museum of Art original

S2300 Small Phoenix Tray (7½"L) *DSC*

W4101 Blue and White Worcester Bowl (10½" dia.) *DSC*
 Reproduction of a Winterthur original

U6535 Large Chatsworth Tulipiere (40" h.)
 U6538 Small Chatsworth Tulipiere (22½" h.)
 Reproduction of Stately Homes originals



W4003 Mustard Pot (3½" h.) Reproduction of a Winterthur original

Y1628 Blossom Plate (9" dia.) Reproduction of a Metropolitan Museum of Art original

S1630 Blossom Cereal Bowl (7¼" dia.)

DSC



Y1627 Blue and White Cachepot (8½" dia., 6"h.)
 Reproduction of a Metropolitan Museum of Art original

Mottahedeh



AMERICAN SHIPS

The National Maritime Museum, Greenwich, England and Mottahedeh commemorate six early U.S. vessels: the frigates *Chesapeake* and *Constitution*, the clipper ships *Flying Cloud* and *Nightingale*, the first-class packet ship *Yorkshire of New York* and the auxilliary packet ship *Massachusetts*. Each ship is identified on the back of the plates, mugs and oval trays. Other pieces portray the *Constitution*.



- S1830 Constitution Oval Tray (7" L.)
- S1835 Constitution Pitcher (7½" h.)
- S1986 Constitution Open Cider Jug (9¾" h.)
- S1983 Oval Trays - Set of 6 (6¾" L.)
- S1831 Constitution Shell Dish (8¼" dia.)
- S1834 Constitution Sm. Square Bowl (6½" dia.)
- S1981 Luncheon Plates - Set of 6 (9" dia.)
- S1980 Mugs - Set of 6 (4½" h.)
- S1832 Constitution Trumpet Vase (11" h.) *use a Lamp*



Mottahedeh

DIPLOMATIC SERVICE

These porcelain accessories were designed by Mottahedeh especially for the diplomatic reception rooms of the Department of State and the White House. They may also be found in many U.S. embassies around the world. The designs are adapted from Chinese export porcelain, circa 1810, bearing one of the earliest depictions of the American eagle found in ceramic decoration.



- WH4D *Eagle Trumpet Vase (11" h.)*
- WH6D *Eagle Cachepot (6 7/8" dia.)*
- WH8D *Eagle Plate (9 1/4" dia.)*
- WH5D *Eagle Sm. Square Bowl (6 1/8" sq.)*
- S1631 *Discovery Pitcher (7 1/4" h.)*
- WH1D *Eagle Oval Tray (6 7/8" L)*
- WH2D *Eagle Shell Dish (8 1/4" sq.)*
- WH11D *Eagle Sm. Lobed Tray (4 3/8" L)*
- WH9D *Eagle Cup and Saucer (Cup 2 7/8" h., Saucer 5 1/4" dia.)*
- WH10D *Eagle Pitcher (7 1/4")*
- S1500 *Eagle Mug (4 1/2" h.)*



Mottahedeh



BLUE & WHITE

- HC82 Blue Canton Rectangular Covered Box (small) (1½"h., 3½"w., 3"d.)
 HC196 Blue Canton Rectangular Covered Box (large) (1½"h., 5¾"w., 4 ½"d.)
 HC195 Blue Canton Rectangular Covered Box (medium) (1¾"h., 4 ½"w., 3¾"d.)
 HC194 Blue Canton Octagonal Tray (8¼")
 CW2415 Imperial Blue Leaf Dish (10" x 5½") *Disc*



FU DOG JARS

Imperial Garden Lions or Fu Dogs were powerful mythic protectors found seated in front of Imperial Palaces and the homes of important persons. These mythical creatures were adapted to form the finials of Chinese style jars.

- Y2366 Tobacco Leaf Fu Dog Jar (5" dia. x 6"h.)
 Y1688 Famille Verte Fu Dog Jar (7½" dia., 9¾"h.)



SQUARE TRAYS



- S1517 Chinoise Blue Square Tray (large) (6¾" sq.)
 S1516 Chinoise Blue Square Tray (small) (5" sq.)



- HC78 Blue Canton Rectangular Tray (large) (6½" x 7")
 HC77 Blue Canton Rectangular Tray (small) (4½" x 5½")



- Y1714 Famille Verte Rectangular Tray (small) (5½" x 4½")
 Y1715 Famille Verte Rectangular Tray (large) (7½" x 6")

Mottahedeh



LEAPING REINDEER


The Leaping reindeer was inspired by an American calligraphic drawing in the Colonial Williamsburg's Abby Aldrich Rockefeller Folk Art Museum.

- CW3205 Pencil Tray (8" x 4")
- CW3204 Mug (4" h.)
- CW3203 Canape Plate (8" square)
- CW3202 Luncheon Plate (8" dia)



VERSE TRAYS



- S2504  Great is the Man (5 1/2")
- S2803 Family Fudge (5")
- MN1730 Books (5")

- MN1706 Cornflower (5 1/2")
- MN1708 Faith (4 1/2")
- MN1705 J'aime et J'espere (4 1/2")
- MN1709 Knowledge (4 1/2")
- MN1707 Music (4 1/2")



Mottahedeh



RING TRAYS

- S2810 "Mother's Love" Ring Tray (5¾" L.)
- S2811 "Golf as in Life" Ring Tray (5¾" L.)
- S2812 "Young Heart" Ring Tray (5¾" L.)
- S2813 "Love Knows No Bounds" Ring Tray (5¾" L.)
- S2814 "Loyal Book" Ring Tray (5¾" L.)
- S2815 "Tennis" Ring Tray (5¾" L.)

- MN1705 "Jaime et J'espere" Ring Tray (4½" L.)
- MN1707 "Music" Ring Tray (4½" L.)
- MN1708 "Faith" Ring Tray (4½" L.)
- MN1709 "Knowledge" Ring Tray (4½" L.)



- MN1725 "Books" Rectangle Ring Tray (5¾" L.)
- S2816 "Pet" Ring Tray (5¾" L.)
- MN1730 "Books" Oval Ring Tray (5½" L.)
- S2817 "Family is a Gift" Ring Tray (5¾" L.)



Mottahedeh

RING TRAYS



- CW2605 "Faithful Friend" Ring Tray (5¼" l.)
- CW2606 "Love Bears All Things" Ring Tray (5¼" l.)
- CW2604 "Liberty of Choice" Ring Tray (5¼" l.)
- S2804 "Great is the Man" Ring Tray (5¼" l.)

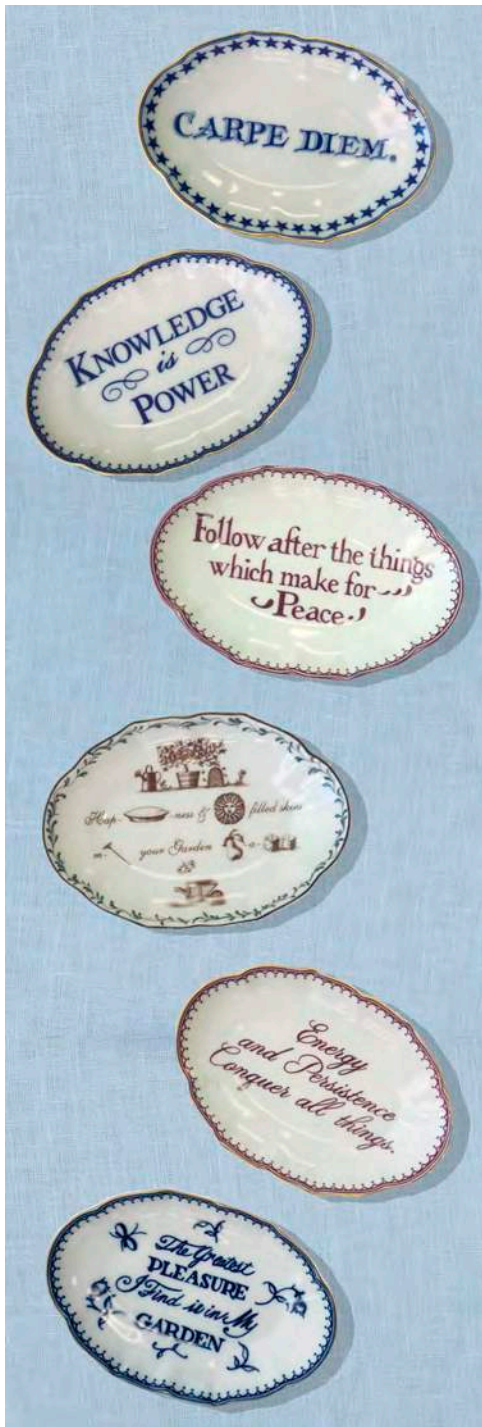
- S2801 "Familiar Acts are Beautiful" Ring Tray (5¼" l.)
- S2809 "Traditional Golfers" Ring Tray (5¼" l.)
- S2802 "Strong Man" Ring Tray (5¼" l.)



- CW2611 "Many are the Stars" Ring Tray (5¼" l.)
- CW2610 "Take Care" Ring Tray (4½" l.)
- CW250B "Trifling is My Present" Ring Tray (5¼" l.)
- CW250R "Remember Me" Ring Tray (5¼" l.)

- W11D "Eagle" Ring Tray (4½" l.)
- S2803 "Families are Like Fudge" Ring Tray (5¼" l.)
- CW2609 "Christmas" Ring Tray (5¼" l.)
- CW251 "As Time Flies" Ring Tray (5¼" l.)
- W1201 "Friendship Sweetens" Ring Tray (4½" l.)

Mottahedeh



RING TRAYS

- CW2602 "Carpe Diem" Ring Tray (5 3/4" l.)
- CW2607 "Knowledge is Power" Ring Tray (5 3/4" l.)
- CW2603 Peace Ring Tray (5 3/4" l.)
- CW2601 Rebus Tray (5 3/4" l.)
- CW2608 Energy & Persistence Ring Tray (5 3/4" l.)
- CW2600 Garden Ring Tray (5 3/4" l.)

- S2805 "Mother" Ring Tray (8" x 4 1/4" l.)
- S2806 "Father" Ring Tray (8" x 4 1/4" l.)
- S2807 "Sister" Ring Tray (5 3/4" x 4" l.)
- S2808 "Brother" Ring Tray (5 3/4" x 4" l.)



CW2615 "Rebellion" Ring Tray (3 1/4")



CW2612 "Love Unites Us" Ring Tray (3 1/4")



CW2613 "The Present Fashion" Ring Tray (3 1/4")



CW2614 "The Best" Ring Tray (3 1/4")



CW2616 "Scandal" Ring Tray (3 1/4")

Mottahedeh

RING TRAYS

- CW2617 "Tho absent" Ring Tray (5 1/4" L.)
 CW2618 "For Kindness" Ring Tray (3 1/4" L.)
 CW2622 "Tea and Hope" Ring Tray (5 1/4" L.)
 CW2619 "Beloved by all" Rebus Tray (8 1/4" L.)



- S2825 "Knowledge & Wisdom" Ring Tray (5 3/4 x 4 1/2" L.)
 S2828 "Fairway of Life" Ring Tray (5 3/4" x 4 1/2" L.)



MV1801 "Liberty" Ring Tray (3 1/4")

MV1800 "True Friendship" Ring Tray (3 1/4")

S1988 "My Heart is Fix'd" Ring Tray (3 1/4")

Mottahedeh



RING TRAYS

S627B "Ability" (5 3/4" x 4 1/2")
 S2350 Eagle Orange (4 1/2" x 3 1/2")

S2819 "Two kinds of people" (5 1/4" dia.)
 S2820 "Golf as in Life" w/ swag (5 1/4" l.)
 S2822 "Don't shake the Tree" (4 1/2" x 3 1/2")

S2823 "Mother Daughter" (5 3/4" l.)
 S2824 "Friend with Chocolate" (4 1/2" x 3 1/2")
 S2829 "Favorite Breed - Adopted" (5" l.)

S2830 "Rescue, Save, Love" (5" l.)
 S2833 "Nature Beauty" (5 1/4" l.)

Mottahedeh



S2827 "Person who never gives up" (5 3/4" x 4")

RING TRAYS

Some great words of wisdom from our former American Presidents, (and a favorite First Lady Eleanor Roosevelt) make this a timeless collection. Made of high fire porcelain and hand-edged in 22K gold.

- S2826 "Believe you can" (5 3/4" x 4")
- S2834 "Those who dare" (5 3/4" x 4")
- S2835 "Whatever you are" (5 3/4" x 4")
- S2836 "The Object of Love" (5 3/4" x 4")
- S2837 "Great minds discuss ideas" (5 3/4" x 4")
- S2838 "Mankind must put an end to war" (5 3/4" x 4")
- S2839 "If your actions inspire others" (5 3/4" x 4")
- S2840 "Life is Grand" (5 3/4" x 4")
- S2841 "We can't help everyone" (5 3/4" x 4")

Mottahedeh



ARTICHOKES

The Artichoke Tureen was inspired by an English porcelain of the mid 1800's and is handpainted in Italy with 22 carat gold accents. The Centerpiece and Small Bunch were created in honor of the 50th anniversary of our partnership with Basso Factory of Italy.

- S6449 *Artichokes Centerpiece* (16" h.)
- S6469 *Artichokes Small Bunch Triple* (8" l. x 4½" h.)
- TD301 *Artichokes Tureen and Stand* (Tureen 6½" h. x 5½" w.
Stand 8½" dia.)



NUTLEAF

Naturalist will love the leaves and nuts of four North American trees. Shown are Pecan, Oak, Hazel Nut, and Chestnut. Accented with gold flecking at the rim.

- S802 *Nutleaf Dessert Set of Four* (8½" dia.)
- S802GB *Nutleaf Dessert Plate Set of Four with Gift Box*
- S804 *Nutleaf Cup and Saucer Set of Four*
- S804GB *Nutleaf Cup and Saucer Set of Four with Gift Box*
- S807 *Nutleaf Cake Plate*



MAJOLICA

Majolica refers to brightly colored faience historically made in Europe. Shown here are re-introductions of time honored pieces.

- S4157 *Ibis and Lotus Compote* (9¼" h. x 5¼" w.)
- U6522 *Lettuce Tureen and Stand, Large* (8" h., 12" dia.)
- U6528 *Lettuce Box and Stand* (5" h., 8" dia.)



Mottahedeh



TONY
DUQUETTE

NOBLE STAGS

The Noble Stag is available in two sizes; a tureen and a smaller compote. Both feature black matte glaze and brass metal antlers. These pieces are hand painted with 22k gold accents.

TD408 Stag Compote (5½" x 2" x 7")
TD409 Stag Tureen (14" x 6" x 15")



BASALT CACHEPOTS

These French inspired cachepots in two shapes feature gold garlands with fleur-de-lis center motif on matte black glaze to emulate black basalt. Lion head handles enhance the classic design.

TD410 Oval Cachepot (14" l. x 7" w.)
TD411 Round Cachepot, Large (9½" dia. x 8" h.)
TD412 Round Cachepot, Small (7½" dia. x 6" h.)
TD402 Lobed Plate (9½" dia.)



MELON TUREEN & STAND

Add some theater to your entertaining with this individual tureen. Glazed with matte white and painted with matte gold. It is a show stopper.

TD302 Melon Tureen and Stand
(Tureen 6½" h. x 6½" w. Stand 8½" dia.)

Mottahedeh



S2980 *Carp Tureen*
(19" L. x 11" w.)

This exact reproduction of a monumental tureen, circa 1740-1760, with salmon-red enamel highlighted in gold is a striking realization of the ancient Chinese symbol of a carp representing success and plenty.



The large and small Carp Platters are adaptations of a Chinese Export platter circa 1750-60. The originals are from the Dallas Museum of Art, Wendy Reeves Collection. The naturalistically painted carp motif has been adapted in a Chinese Export shell dish and monteith cachepot.

- DM1868 *Carp Shell Dish (8" x 8")*
- DM1867 *Carp Platter, Large (16" L)*
- DM1866 *Carp Platter, Small (10½" L)*
- DM1870 *Carp Monteith Planter (15" dia., 10¼" h.)*

- S2986 *Rooster Platter, Small (10½" L)*
- S2987 *Rooster Platter, Large (16" L)*

Mottahedeh



CW3450 Brighton Pavilion Parrots, left (10" h., 13½" w.)

CW3420 Brighton Pavilion Birds, right and below (16½" h.)

The Brighton Pavilion birds and parrots are inspired by motifs on an 18th century Chinese wallpaper in the Lightfoot House at Colonial Williamsburg.



S5255 Exotic Birds, left (12¾" h.)

S5247 Cockatoos, far right (15½" h.)

S5259 Parakeets, below (7" h., 10½" w.)

These figurines are reproductions of Meissen originals, modeled by J.J. Kaendler and dating from the mid 18th century.



Mottahedeh



CREAMWARE

F6683 *Bird Tureen Large (4 qt.) Stand (14 dia.)*
F6684 *Bird Tureen Small (7 1/2" h.) and Stand (8 3/4" dia.)*



S4196 *Lion Tureen (4 qt.) and Platter (14 1/2" l.)*



U6216 *Bull Dogs, Pair (Each 9" h. x 11 1/2" l.)*

Mottahedeh



CREAMWARE

LONGTON HALL

Mottahedeh's creamware features the "delightful Rococo forms" and crisp strawberry leaf design which Longton Hall, the first porcelain factory in Staffordshire, England, produced between 1754 and 1757.

- S4031 Longton Dessert Plate (8 3/4" dia.)
- S4032 Longton Cake Plate (13" dia.)
- S4033 Longton oval Basket (10" l.)
- S4034 Longton Cookie Plate (11" l.)



PONT AUX CHOUX

- S4605B Pot de Creme - set of 4
- S4617 Pot de Creme Saucers - set of 4 (5" dia.)

Mottahedeh



CREAMWARE

- S6201 *Urn with Latticework (16" h.)*
- S6202 *Chinese Large Handled Vase with Cover (19" h.)*
- S6203 *Chinese Square Vase (14" h)*
- S6204 *Chinese Open (13" h.)*
- S6208 *Chinese Octagon Urn with Cover (13" h.)* S6209 *Wall of China Covered Jar (17" h.)*
- S6210 *Tall Greek Key Jar with Cover (16" h.)*
- S4080 *Creamware Square Candlestick (12" h.)*
- U6681 *Three Ladies Candlestick (13" h.)*
- S6200 *Napolean Candlestick (13" h.)*



Mottahedeh



CREAMWARE

- S6500 *Oval Embossed Cachepot (9 1.2" l. 6 1/2" h.)*
- S6505 *Round Embossed Cachepot (8" l. x 6" h.)*

S4030 *Sheffield Handled Centerpiece (13" l. x 9 1/2" w.)*

- S4097 *Chinese Man and Woman - Pair*
- S4098 *Chinese Guitar Player - single (11" h)*
- S4097 *Chinese Lady with Bird - single (13" h.)*

S4324 *Monkey Bookends (8" h.)*



Mottahedeh



CREAMWARE

- S4082 Dolphin Candlestick (9 1/2" h.)
- S4084 Dolphin Centerpiece Large (10" h. x 11" l.)
- S4083 Dolphin Centerpiece Medium (7" h. x 9 1/2" l.)
- S4401 Medallion Basket (5 1/2" h. x 14 1/2" l.)
- S4455 Lewis Tureen (9 1/2" h. x 11 1/2" l.)



Mottahedeh



CREAMWARE

- S4086 *Dancing Monkeys Pair* (15 1/2" h.)
- S4092 *Queensware Heart Server* (14 1/2" dia.)
- S4400 *Artichoke Tureen* (9" h. x 8" dia.)



MAJOLICA

- U6524 *Artichoke Box* (4 1/2" h.)

Mottahedeh



PASSION FOR MAPS

WORLD MAP HONDIUS

Reproductions of original maps and lithographs of Hondius, Jansson, Blaeu and Mottram.

NEW YORK HARBOR 1855 by Charles Mottram

- MP1200 Mug (4½" h.)
- MP1201 Small Rectangular Tray (7½" x 3½")
- MP1202 Large Rectangular Tray (10¾" x 7½")
- MP1203 Square Plate (8¼" x 8¼")

WORLD MAP by HONDIUS c. 1630

- MP1205 Mug (4½" h.)
- MP1206 Small Rectangular Tray (7½" x 3½")
- MP1207 Large Rectangular Tray (10¾" x 7½")
- MP1208 Square Plate (8¼" x 8¼")

BLAEU MERCATOR MAP c. 1606

- MP1210 Mug (4½" h.)
- MP1211 Small Rectangular Tray (7½" x 3½")
- MP1212 Large Rectangular Tray (10¾" x 7½")
- MP1213 Square Plate (8¼" x 8¼")



MP1200 MP1205 MP1210



Mottahedeh



G1409 Eagle Large Cachepot (10¾" dia.)

G1411 Eagle Small Cachepot (5½" dia.)

The Grossman Collection of Victorian antique papers is one of the foremost archives of early graphics in the United States and likely the world. Mottahedeh reproduces these images on a new collection of porcelain giftware.



S1413 Colonial Eagle Small Cachepot (5½" dia.)



G1410 Eagle Large Box (5¾" x 4½")



S1412 Colonial Eagle Large Box (5¾" x 4½")

S906E Indigo Wave Eagle Platter (13¾" L)

S910E Indigo Wave Square Canape with Eagle (8" x 8")

S911E Indigo Wave Eagle Mug (4 ¼" h.)

S925 Indigo Wave Divina Vase (16" h.)

S925E Indigo Wave Divina Vase with Eagle (16" h.)



Mottahedeh

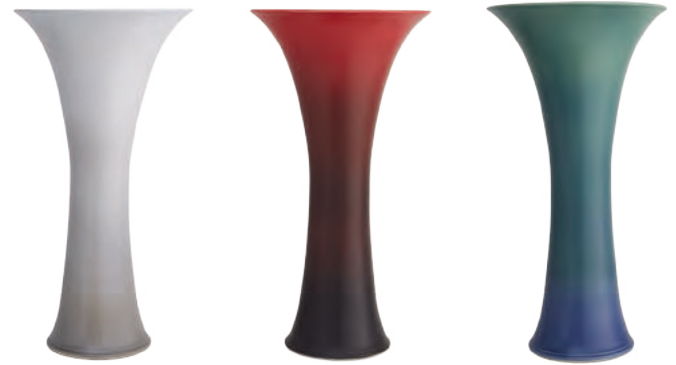


ROOKWOOD

Mottahedeh has partnered with Rookwood Art Pottery to introduce vintage and classic vessels that reflect the rich history of Rookwood, one of America's most honored decorative arts companies. Founded in Cincinnati in 1880 by Maria Longworth Nichols, Rookwood Pottery was the first female-owned manufacturing company in the United States. Rookwood is known for sophisticated gradient glazes and we have taken a simplified version of these for a contemporary yet classic, casual yet elegant look. They are excellent for tall and dramatic flower arrangements.



R1504WG Sung Vase White & Gray (20" h., 10" dia.)
 R1504RB Sung Vase Red & Black (20" h., 10" dia.)
 R1504VB Sung Vase Verdigris & Blue (20" h., 10" dia.)



R1502WG Callalily Vase White & Gray (21" h., 11¼" dia.)
 R1502RB Callalily Vase Red & Black (21" h., 11¼" dia.)
 R1502VB Callalily Vase Verdigris & Blue (21" h., 11¼" dia.)



R1501WG Lozenge Vase White & Gray (17" h., 9½" dia.)
 R1501RB Lozenge Vase Red & Black (17" h., 9½" dia.)
 R1501VB Lozenge Vase Verdigris & Blue (17" h., 9½" dia.)



R1503WG Classic Vase White & Gray (19½" h., 8" dia.)
 R1503RB Classic Vase Red & Black (19½" h., 8" dia.)
 R1503VB Classic Vase Verdigris & Blue (19½" h., 8" dia.)

Mottahedeh



ROOKWOOD

- R1507YB Orion Compote Gold & Brown (5" h., 11" dia.)
- R1507YBF Orion Flower Bowl w/Frog Gold & Brown (5" h., 11" dia.)
- R1506YB Orion Ewer Gold & Brown (12" h., 8" dia.)
- R1505YB Orion Barrel Jar Gold & Brown (11" h., 9" dia.)



- R1510SB Pinecone Rectangular Platter
Salmon, Verdigris & Brown (19" l. x 12" w.)
- R1509SB Pinecone Large Square Tray
Salmon, Verdigris & Brown (12" l. x 12" w.)
- R1508SB Pinecone Small Square Tray
Salmon, Verdigris & Brown (9" l. x 9" w.)

Mottahedeh

HEIRLUMINARE HOME FRAGRANCE CANDLES

WHEN THE FRAGRANCE
IS A MEMORY,
THE VESSEL IS A TREASURE.

BLUE CANTON

Well known in Colonial America, blue and white Canton ware set the most fashionable tables. Named for the great Chinese trading port from which it came, Blue Canton today is part of the heritage of many American families.

Fragrance: Air de Bergamia

Top Notes: citrus, lemon, orange

Heart Notes: bergamot, tea notes, raspberry, peach

Background Note: moss

HC86V Blue Canton Fu Dog Vessel (6½" h., 5½" dia.)
23 oz. net 80 hrs. average burn time

HC148V Blue Canton Shang Vessel (5" h., 3½" dia.)
8 oz. net 65 hrs. average burn time



TOBACCO LEAF

This extravagant design was originally made in China for the Portuguese market. A small phoenix bird perches on the leaves of the flowering Nicotiana (Tobacco) plant. 27 colours and 22k gold make up this pattern, based on an original in the Metropolitan Museum of Art.

Fragrance: Mediterranean Fig

Top Notes: bergamot, lemon

Heart Note: fig

Background Notes: jasmine, musk

Y2366V Tobacco Leaf Fu Dog Vessel (6½" h., 5½" dia.)
23 oz. net 80 hrs. average burn time

S2362V Tobacco Leaf Shang Vessel (5" h., 3½" dia.)
8 oz. net 65 hrs. average burn time



FAMILLE VERTE

This graceful design, with its leaves, berries and butterflies, was derived from antique Chinese Palace porcelain. At a time when porcelain was valued because of its rarity, highly prized examples found their way to Europe. Kangxi Period (1662-1722).

Fragrance: Cedar, Sandlewood & Clove

Top Notes: lemon, lavender, cinnamon

Heart Notes: cedar, cloves, sandlewood

Background Notes: tonka bean, amber, musk

Y1702V Famille Verte Fu Dog Vessel (6½" h., 5½" dia.)
23 oz. net 80 hrs. average burn time

Y1698V Famille Verte Shang Vessel (5" h., 3½" dia.)
8 oz. net 65 hrs. average burn time



DUKE OF GLOUCESTER

This extraordinary design is adapted from a dinner service originally made for William Henry, Duke of Gloucester, circa 1770. It incorporates fruit, imaginary insects and colorful fruit, surrounded with 22 carat gold.

Fragrance: Orchard Plum

Top Notes: coriander, rhubard, orange

Heart Notes: plum, peach, jasmine

Background Notes: sandlewood, vanilla, musk

CW1505V Duke of Gloucester Fu Dog Vessel (6½" h., 5½" dia.)
23 oz. net 80 hrs. average burn time

CW1522V Duke of Gloucester Shang Vessel (5" h., 3½" dia.)
8 oz. net 65 hrs. average burn time



Mottahedeh



HEIRLUMINARE HOME FRAGRANCE CANDLES

WHEN THE FRAGRANCE IS A MEMORY,
THE VESSEL IS A TREASURE.



CORNFLOWER LACE

Fragrance: Grapefruit, Vanilla & Pear

Top Notes: grapefruit, lemon, pear

Heart Notes: elemy, gentian, galbanum

Background Notes: vanilla, tonka, musk

S1462V Grand Round Vessel (3½" h., 4¾" dia.) 6.5 oz. net
17 hrs. average burn time

S1463V Petite Round Vessel (2¾" h., 3" dia.) 2 oz. net
13 hrs. average burn time



GREEN LEAF LACE

Fragrance: Green Jasmine Tea

Top Notes: orange, lemon, jasmine

Heart Notes: rose, green note, mint, fruit

Background Notes: musk, coconut

S1562V Grand Round Vessel (3½" h., 4¾" dia.) 6.5 oz. net
17 hrs. average burn time

S1563V Petite Round Vessel (2¾" h., 3" dia.) 2 oz. net
13 hrs. average burn time



COBALT BLUE LACE

Fragrance: Rose, Ginger & Mandarin Flower

Top Notes: bergamot, lemon, mandarin flower

Heart Notes: tuberose, jasmine, ginger, ylang-ylang

Background Notes: cedarwood, amber, vanilla, cinnamon

S1662V Grand Round Vessel (3½" h., 4¾" dia.) 6.5 oz. net
17 hrs. average burn time

S1663V Petite Round Vessel (2¾" h., 3" dia.) 2 oz. net
13 hrs. average burn time



GREEN APPLE LACE

Fragrance: Fresh Lemon Verbena

Top Note: lemon zest

Heart Note: verbena

Background Note: white tea

S1362V Grand Round Vessel (3½" h., 4¾" dia.) 6.5 oz. net
17 hrs. average burn time

S1363V Petite Round Vessel (2¾" h., 3" dia.) 2 oz. net
13 hrs. average burn time

Mottahedeh

HEIRLUMINARE HOME FRAGRANCE CANDLES

WHEN THE FRAGRANCE IS A MEMORY,
THE VESSEL IS A TREASURE.

AMERICAN EAGLE VOTIVE

This porcelain was designed especially for diplomatic reception rooms of the Department of State and the White House, bearing one the earliest depictions of the American Eagle found in ceramic decoration. Candle is 100% natural wax producing a clear, smoke-free burn. The scent is mild and woody.

Fragrance: Amber, Musk & Jasmine

S1500V American Eagle Votive (3" dia., 5" h.), 9.9 oz. net, 60 hrs. avg. burn time



BUTTERFLY VOTIVES

Our Heirluminare collection now includes these beautiful votives, with finely detailed paintings of butterflies that migrate from Costa Rica to the United States. Each candle features one of four exquisite butterflies and has a fresh botanical fragrance to match. 23 hours average burn time.

Blue Morpho Fragrance: honey, lily of the valley, orange blossom

Monarch Fragrance: green tea, lavender, mint

Swallowtail Fragrance: lemon, green leaves, vanilla

Helicon Fragrance: orange, cinnamon, musk

S410V Blue Morpho Votive (4½" dia.), 6.3 oz. net

S412V Swallowtail Votive (4½" dia.), 6.3 oz. net

S411V Monarch Votive (4½" dia.), 6.3 oz. net

S413V Helicon Votive (4½" dia.), 6.3 oz. net

TWO VOTIVES WITH TRAY



CORNFLOWER LACE

Fragrance: Grapefruit, Vanilla & Pear

S1464V Two Votives w/Tray (3" h., 7" w.) 4 oz. net, 26 hrs. avg. burn time



GREEN LEAF LACE

Fragrance: Green Jasmine Tea

S1564V Two Votives w/Tray (3" h., 7" w.) 4 oz. net, 26 hrs. avg. burn time



COBALT BLUE LACE

Fragrance: Rose, Ginger & Mandarin Flower

S1664V Two Votives w/Tray (3" h., 7" w.) 4 oz. net, 26 hrs. avg. burn time



GREEN APPLE LACE

Fragrance: Fresh Lemon Verbena

S1364V Two Votives w/Tray (3" h., 7" w.) 4 oz. net, 26 hrs. avg. burn time

Mottahedeh

HEIRSAVONARE GIFT SOAPS



PORCELAIN TRAYS PAIRED WITH THREE LUXURY SCENTED GIFT SOAPS

Our classic porcelain tray designs, paired with the highest quality, pure vegetable oil soaps, add a touch of old world style and will delight your guests. Soaps are scented with a brilliant creation that combines the intensity of blooming rose, jasmine and tart cassis with the richness of Damascus plum and white peach. A base of golden sandalwood and liquid amber completes this unique blend. Formulated expressly for Mottahedeh.

Essential Oils: Geranium, Cinnamon, Elemi

Soaps 2.25oz. /63.7g. each Soap Dishes 4" l. x 3" h.



BLUE CANTON

HC117SP Blue Canton Gift Soap Set



S-Soap Gift Soap Bars (Set of 3)



GOLDEN BUTTERFLY

M37SP Golden Butterfly Gift Soap Set



FAMILLE VERTE

Y1708SP Famille Verte Gift Soap Set



TOBACCO LEAF

Y2346SP Tobacco Leaf Gift Soap Set



SACRED BIRD & BUTTERFLY

HC632SP Sacred Bird & Butterfly Gift Soap

EACH PIECE, A MASTERPIECE



THE LAMP COLLECTION BY

Mottahedeh



MOTTAHEDEH has been recognized around the world for the quality of its museum reproductions in porcelain, stoneware and faience. Mottahedeh has now partnered with Rookwood Art Pottery to introduce vintage and classic vessels that reflect the rich history of Rookwood, one of America's most honored decorative accessories companies, founded in Cincinnati in 1880 by Maria Longworth Nichols.

"Behind every piece is a story", Mottahedeh President Wendy Kvalheim says. "Having a love for the simple style and rich glazes that characterize Rookwood, we are glad to see this venerable period brought back to life."

The smooth vellum glazes are produced using original formulas of the period. Shades are linen on paper.



RI502WGL
Callalily Vase Lamp White & Gray
Overall Height 35" Shade Width 22"
Shade Height 13"



RI502RBL
Callalily Vase Lamp Red & Black
Overall Height 35" Shade Width 22"
Shade Height 13"



RI502VBL
Callalily Vase Lamp Verdigris & Blue
Overall Height 35" Shade Width 22"
Shade Height 13"



RI503WGL
Classic Vase Lamp White & Gray
Overall Height 35" Shade Width 22"
Shade Height 13"



RI503RBL
Classic Vase Lamp Red & Black
Overall Height 35" Shade Width 22"
Shade Height 13"



RI503VBL
Classic Vase Lamp Verdigris & Blue
Overall Height 35" Shade Width 22"
Shade Height 13"



R1504WGL
Sung Vase Lamp White & Gray
Overall Height 35" Shade Width 22"
Shade Height 13"



R1504RBL
Sung Vase Lamp Red & Black
Overall Height 35" Shade Width 22"
Shade Height 13"



R1504VBL
Sung Vase Lamp Verdigris & Blue
Overall Height 35" Shade Width 22"
Shade Height 13"



R1501WGL
Lozenge Vase Lamp White & Gray
Overall Height 32" Shade Width 15"
Shade Height 12"



R1501RBL
Lozenge Vase Lamp Red & Black
Overall Height 32" Shade Width 15"
Shade Height 12"



R1501VBL
Lozenge Vase Lamp Verdigris & Blue
Overall Height 32" Shade Width 15"
Shade Height 12"



R1506GV
Orion Ewer Lamp **Color??**
Overall Height 25" Shade Width 16"
Shade Height 11"



R1506YB
Orion Ewer Lamp Yellow & Brown
Overall Height 25" Shade Width 16"
Shade Height 11"



R1505YBL
Orion Barrell Jar Lamp Gold & Brown
Overall Height 25" Shade Width 16"
Shade Height 11"

THE CREAMWARE COLLECTION

MOTTAHEDEH'S CREAMWARE is a pure white earthenware body, produced with the addition of white china clay, allowing for delicate detail on the surface of the vessel. This style was first produced in Staffordshire, England and perfected by Josiah Wedgwood in 1770. Our Creamware is produced in Italy and cast and finished by hand. The scenes and motifs depicted are Chinese in origin.



S6204L
Creamware Chinese
Bouquet Lamp
Overall Height 35"
Shade Width 22"
Shade Height 13"



S6208L
Creamware Footed
Octagonal Urn Lamp
Overall Height 35"
Shade Width 22"
Shade Height 13"



S6210L
Creamware Greek
Key Lamp
Overall Height 35"
Shade Width 22"
Shade Height 13"



S6209L
Creamware Wall of
China Lamp
Overall Height 35"
Shade Width 22"
Shade Height 13"

THE TRADITIONAL COLLECTION

LAMPS OF DISTINCTION. A rigorous standard of excellence has been extended to lighting, with this collection of historic table lamps that is regarded as one of the finest available. The collection includes range of shapes, colors, and sizes that are versatile enough to accent a wide variety of interiors. Classic in style, Mottahedeh's emphasis on color is superbly realized in these lamps with some designs requiring as many as 27 individual colors. Many of the lamps are produced of finest quality hard porcelain. The shades are fine silk and each comes fitted with a decorative finial. The bases have been created to compliment the design and materials, including hand-finished hardwood, gold leaf, marble and brass. All lamps are UL approved, and hand-assembled in the United States..




CW1592L
Duke of Gloucester
Ginger Jar Lamp
Height 29"




CW2422L
Imperial Blue
Ginger Jar Lamp
Height 31"




CW3420L
Brighton Pavilion Birds
Lamps, Pair
Height 32"



HC132L
Blue Canton Ginger Jar Lamp
Overall Height 31"



HC139L
Blue Canton Tea Jar Lamp
Overall Height 21"



HC241L
Bamboo Covered Jar Lamp
Overall Height 21"



HC79L
Blue Canton Shang Vase Lamp
Overall Height 20"



HC83L
Blue Canton Trumpet Lamp
Overall Height 25.5"



SI92L
Blue Canton Tea Jar Lamp
Small
Overall Height 25"



HC118L
Blue Canton Temple Jar Lamp
Overall Height 25"



Y2357L
Tobacco Leaf Large
Ginger Jar Lamp
Overall Height 30"



Y2360L
Tobacco Leaf Trumpet Lamp
Overall Height 21"



S4324L
White Monkey
Lamps, Pair
Overall Height 23"



WH4DL
Diplomatic Eagle Trumpet Vase Lamp
Overall Height 25.5"



CW2444L
Chelsea Bird Trumpet Lamp
Overall Height 25.5"

PRICE LIST 2020 -2021



DINNERWARE

N = New Item
S = Special Order
R = Retired with Stock

Warehouse & Accounts
5 Corporate Drive
Cranbury, NJ 08512
Phone: 609.409.1490
Order: 1.800.443.8225
Fax: 609.409.6702

New York City Showroom
41 Madison Avenue, 21st Floor
New York, NY 10010
Phone: 212.685.3050
Phone: 800.242.3050
Fax: 212.213.3978 www.mottahedeh.com

Prices are retail subject to usual trade discount. F.O.B. Mottahedeh Warehouse Cranbury, NJ.

PRICES ARE SUBJECT TO CHANGE WITHOUT NOTICE. Dinnerware patterns are listed in alphabetical order. Accessories are listed by item number within each pattern heading. Items shown in the catalogue but not listed on this price list have been discontinued.

Item No	Page #	Description	List Price	Item No	Page #	Description	List Price
BARGELLO				BLUE CANTON - Continued			
S4101	D-56	Bargello Dinner Plate.....	85	HC146		Blue Canton Covered Oval Casserole	535 S
S4102	D-56	Bargello Dessert Plate.....	70	HC127	D-5	Blue Canton Square Veg Bowl & Cover.....	365
S4103		Bargello Bread & Butter Plate.....	60 N	HC87	D-8	Blue Canton Square Bowl, Full Décor - Large.....	275
S4106		Bargello Rim Soup.....	85 N	HC112	D-5	Blue Canton Square Bowl - Large.....	200
S4108		Bargello Mug.....	55 N	HC116	D-5	Blue Canton Scalloped Bowl.....	160
S4109		Bargello Dessert Bowl.....	65 N	HC120	D-4	Blue Canton Octagonal Cookie Plate.....	130
BARRIERA CORALLINA				HC157	D-4	Blue Canton Cake Plate.....	130 S
TD100	D-61	Barriera Corallina Five Piece Place Setting Red.....	770 R	HC107	D-2	Blue Canton Coffeepot.....	210
TD101	D-61	Barriera Corallina Dinner Plate Red.....	210 R	HC108	D-2	Blue Canton Teapot.....	215
TD102	D-61	Barriera Corallina Dessert Plate Red.....	175 R	HC109	D-2	Blue Canton Sugar Bowl & Cover.....	115
TD103	D-61	Barriera Corallina Bread & Butter Plate Red.....	135 R	HC110	D-2	Blue Canton Creamer.....	75
TD104	D-61	Barriera Corallina Tea Cup & Saucer Red.....	250 R	HC113	D-6	Blue Canton Pitcher - Large.....	200
TD110	D-61	Barriera Corallina Large Platter Red.....	550 R	HC140	D-7	Blue Canton Cider Jug & Cover.....	585 S
TD500	D-62	Barriera Corallina Five Piece Place Setting Gold.....	1,605 R	HC142	D-5	Blue Canton Pot De Creme & Lid.....	110 S
TD501	D-62	Barriera Corallina Dinner Plate Gold.....	430 R	HC197	G-2B	Blue Canton Round Box - Medium.....	45
TD502	D-62	Barriera Corallina Dessert Plate Gold.....	345 R	HC198	G-2B	Blue Canton Square Box - Medium.....	65
TD503	D-62	Barriera Corallina Bread & Butter Plate Gold.....	270 R	HC91	D-5	Blue Canton Mustard Pot & Lid.....	40
TD504	D-62	Barriera Corallina Tea Cup & Saucer Gold.....	560 R	HC117	D-1/D-5	Blue Canton Master Salt.....	50
TD510	D-62	Barriera Corallina Large Platter Gold.....	1,115 R	S203	D-6	Blue Canton Round Souffle.....	70
TD600	D-62	Barriera Corallina Five Piece Place Setting Platinum... 1,070 R		S204	D-6	Blue Canton Oval Casserole - Medium.....	100
TD601	D-62	Barriera Corallina Dinner Plate Platinum.....	300 R	S205	D-6	Blue Canton Rectangular Bake Dish - Medium.....	100
TD602	D-62	Barriera Corallina Dessert Plate Platinum.....	230 R	S206	D-4	Blue Canton Ramekin Dish.....	25
TD603	D-62	Barriera Corallina Bread & Butter Plate Platinum.....	175 R	S207	D-4	Blue Canton Square Baking Dish.....	100
TD604	D-62	Barriera Corallina Tea Cup & Saucer Platinum.....	365 R	S208	D-4	Blue Canton Quiche Dish.....	100
TD610	D-62	Barriera Corallina Large Platter Platinum.....	785 R	HC121	D-4	Blue Canton Shell Dish.....	105
BLUE CANTON				HC122	D-3	Blue Canton Square Box & Cover.....	75
HC100	D-1	Blue Canton Five Piece Place Setting.....	220	HC128	D-5	Blue Canton Oval Box.....	105
HC101	D-1	Blue Canton Dinner Plate.....	60	HC134	D-5	Blue Canton Octagonal Tile.....	40
HC102	D-1	Blue Canton Dessert Plate.....	55	HC135	D-5	Blue Canton Round Tile.....	40
HC103	D-1	Blue Canton Bread & Butter Plate.....	45	HC195	G-7	Blue Canton Rectangular Box - Medium.....	100 S
HC104	D-1	Blue Canton Tea Cup & Saucer.....	60	HC196	G-7	Blue Canton Rectangular Box - Large.....	140 S
HC88	D-1	Blue Canton Dinner Plate - Large.....	60	HC77	G-7	Blue Canton Rectangular Tray - Small.....	55
HC136	D-2	Blue Canton Tea Cup & Saucer - Large.....	100	HC78	G-7	Blue Canton Rectangular Tray - Large.....	75
HC136B	D-3	Blue Canton Fruit Saucer.....	65	HC82	G-7	Blue Canton Rectangular Covered Box - Small.....	60 R
HC149	D-2	Blue Canton Tea Cup & Saucer, Can Shape.....	55	HC81	D-8	Blue Canton Lobed Tray - Medium.....	80
HC105	D-2	Blue Canton Demitasse Cup & Saucer.....	50	HC85	D-7	Blue Canton Coaster, Large.....	25
HC131	D-2	Blue Canton Mug.....	55	HC115	D-3	Blue Canton Leaf Tray.....	40
HC148	D-2	Blue Canton Shang Mug.....	100	HC92	D-3	Blue Canton Coaster, Small Set/4.....	70
HC156	D-4	Blue Canton Crescent Salad Plate.....	85	HC96	D-7	Blue Canton Bough Vase.....	540 S
HC106	D-3	Blue Canton Rim Soup Plate.....	60	HC83	D-8	Blue Canton Trumpet Vase.....	165
HC130	D-2	Blue Canton Cereal Bowl.....	75	HC79		Blue Canton Shang Vase.....	120
HC90	D-5	Blue Canton Porringer.....	55	HC193		Blue Canton Pencil Cup.....	45
HC138	D-3	Blue Canton Dessert Bowl.....	50	S192	D-7	Blue Canton Tea Jar - Small.....	245
HC151		Blue Canton Coupe Plate.....	45 N	HC139	D-7	Blue Canton Tea Jar - Large.....	1,285 S
HC126	D-5	Blue Canton Square Bowl - Small.....	90	HC118	D-3	Blue Canton Temple Jar.....	400
HC129	D-5	Blue Canton Sauceboat.....	120 S	HC132	D-7	Blue Canton Ginger Jar & Cover.....	1,400
HC143		Blue Canton Sauce Tureen & Stand.....	375	HC86	D-7	Blue Canton Fu Dog Jar - Small.....	390
HC89	D-8	Blue Canton Oval Tureen & Stand.....	1,130	HC188	D-4	Blue Canton Covered Jar - Small.....	85 S
HC93	D-3	Blue Canton Octagonal Tureen & Stand.....	915	HC84	D-8	Blue Canton Monteith Cachepot.....	390 S
HC93A		Blue Canton Octagonal Platter.....	365	HC125	D-3	Blue Canton 4 Lobed Cachepot.....	195 S
HC97	D-4	Blue Canton Platter - Medium.....	280	BLUE SHÒU			
HC191	D-7	Blue Canton Platter - Small.....	165	S100	D-37	Blue Shòu Five Piece Place Setting.....	185
				S101A	D-37	Blue Shòu Pagoda Dinner Plate.....	50
				S102	D-37	Blue Shòu Dessert Plate.....	45

Item No	Page #	Description	List Price
BLUE SHÒU - Continued			
S103	D-37	Blue Shòu Bread & Butter Plate.....	35
S104	D-37	Blue Shòu Tea Cup & Saucer	55
S105	D-38	Blue Shòu Cereal Bowl	40
S106	D-38	Blue Shòu Rim Soup Plate.....	50
S108	D-38	Blue Shòu Mug	40
S109	D-38	Blue Shòu Breakfast Cup & Saucer.....	65
S110	D-38	Blue Shòu Demi Cup & Saucer.....	40
S111	D-38	Blue Shòu Serving Bowl - Small.....	130
S112	D-38	Blue Shòu Serving Bowl - Large	215
S113	D-38	Blue Shòu Pasta Plate.....	55
S114	D-37	Blue Shòu Oval Platter - Small.....	165
S115	D-37	Blue Shòu Oval Platter - Large.....	215

CHELSEA BIRD

CW2460	D-25	Chelsea Bird Five Piece Place Setting.....	315
CW2449	D-25	Chelsea Bird Dinner Plate Set of 4.....	380
CW2440	D-25	Chelsea Bird Dessert Plate Set of 4.....	280
CW2454	D-25	Chelsea Bird Bread & Butter Set of 4.....	240
CW2448	D-25	Chelsea Bird Tea Cup & Saucer Set of 4.....	340
CW2450		Chelsea Bird Rim Soup Set of 4.....	360
CW2453	D-26	Chelsea Bird Large Platter.....	315
CW2455	D-26	Chelsea Bird Oval Dish	245
CW2441A	D-26	Chelsea Bird Shell Dish A.....	105
CW2442B	D-26	Chelsea Bird Shell Dish B.....	105
CW2443C	D-26	Chelsea Bird Trumpet Vase C.....	145 S
CW2444D	D-26	Chelsea Bird Trumpet Vase D.....	145 S
CW2445A	D-26	Chelsea Bird Leaf Dish.....	215 S

CHELSEA BOTANICAL

Y1784	D-47	Chelsea Botanical Dessert Plate Set of 6.....	355 R
Y1797	D-47	Chelsea Botanical Rim Soup Set of 6.....	475 R
Y1789	D-48	Chelsea Botanical Cup & Saucer Set of 6.....	385 R
Y1790		Chelsea Botanical Bud Shell Dish	85 R
Y1791	D-47	Chelsea Botanical Blossom Shell Dish	85 R
Y1794	D-47	Chelsea Botanical Shell Dish	85 R
Y1796	D-48	Chelsea Botanical Cereal Bowls Set of 6.....	375 R

CHELSEA FEATHER GOLD

S5001	D-46F	Chelsea Feather Gold Dinner Plate.....	95
S5002	D-46F	Chelsea Feather Gold Dessert Plate.....	60
S5003	D-46F	Chelsea Feather Gold Bread & Butter Plate.....	50
S5008	D-46F	Chelsea Feather Gold Mug.....	80

CH'ING GARDEN

CW1600	D-11	Ch'ing Garden Five Piece Place Setting.....	435
CW1601	D-11	Ch'ing Garden Dinner Plate	125
CW1602	D-11	Ch'ing Garden Dessert Plates Set of 4.....	385
CW1603	D-11	Ch'ing Garden Bread & Butter Plate	85
CW1604	D-11	Ch'ing Garden Tea Cup & Saucer.....	135
CW1607	D-11	Ch'ing Garden Octagonal Platter	500
CW1608	D-12	Ch'ing Garden Square Bowl - Small.....	250
CW1609	D-12	Ch'ing Garden Square Bowl - Large.....	475
CW1611	D-12	Ch'ing Garden Round Chop Plate	395 S
CW1612	D-12	Ch'ing Garden Cream Soup & Saucer.....	235 S
CW1613	D-12	Ch'ing Garden Dessert Bowl.....	100

CHINOISE BLUE

S1520	D-29	Chinoise Blue Five Piece Place Setting.....	510
S1520A		Chinoise Blue Five PPS w/Lg Dinner Plate.....	525
S1521	D-29	Chinoise Blue Dinner Plate.....	140
S1522	D-29	Chinoise Blue Dessert Plate.....	125
S1523	D-29	Chinoise Blue Bread & Butter Plate	100
S1524	D-29	Chinoise Blue Can Tea Cup & Saucer.....	145
S1506	D-29	Chinoise Blue Large Dinner Plate	155
S1525	D-29	Chinoise Blue Rim Soup	155
S1546	D-32	Chinoise Blue Crescent Salad Plate	105 S
S1527	D-29	Chinoise Blue Oval Platter.....	435

Item No	Page #	Description	List Price
CHINOISE BLUE - Continued			
S1509	D-32	Chinoise Blue Chop Plate	280 S
S1513	D-29	Chinoise Blue Round Bowl	255
S1528	D-30	Chinoise Blue Square Bowl - Small	225
S1529	D-30	Chinoise Blue Square Bowl - Large.....	375
S1507	D-29	Chinoise Blue Tureen & Platter.....	1,980
S1507P	D-29	Chinoise Blue Octagonal Platter.....	590
S1548		Chinoise Blue Small Sauce Bowl.....	30
S1508	D-32	Chinoise Blue Gravy Boat & Stand	385 S
S1547		Chinoise Blue Cake Plate	200 R
S1549		Chinoise Blue Seder Plate Set	325
S1526	D-29	Chinoise Blue Demitasse Cup & Saucer	110 S
S1540		Chinoise Blue Dejeuner Mug	55
S1531	D-30	Chinoise Blue Coffeepot.....	425 S
S1532	D-30	Chinoise Blue Teapot.....	410 S
S1533	D-30	Chinoise Blue Sugar Bowl.....	220 S
S1534	D-30	Chinoise Blue Creamer.....	150 S
S1510	D-31	Chinoise Blue Ginger Jar - Large.....	1,170 S
S1512	D-29	Chinoise Blue Candlestick Pair	325
S1516	D-31	Chinoise Blue Square Tray - Small	100 R
S1535	D-30	Chinoise Blue Monteith Cachepot.....	445 S
S1536	D-32	Chinoise Blue Pitcher	260 R
S1514	D-31	Chinoise Blue Cachepot - Small	250 S
S1515	D-31	Chinoise Blue Cachepot - Large	310 S

CINCINNATI SERVICE

W1110	D-20A	Cincinnati Five Piece Place Setting.....	450 S
W1104	D-20A	Cincinnati Dinner Plate	120 S
W1100	D-20A	Cincinnati Dessert Plate	100 S
W1105	D-20A	Cincinnati Bread & Butter Plate	95 S
W1102	D-20A	Cincinnati Tea Cup & Saucer.....	135 S
W1115		Cincinnati Mug.....	80 S
W1106	D-20A	Cincinnati Soup Plate	135 S
W1107	D-20A	Cincinnati Dessert Bowl.....	110 S
W1108		Cincinnati Fruit Saucer.....	45 S
W1101	D-20A	Cincinnati Square Bowl.....	425 S
W1109		Cincinnati Oval Platter - Medium.....	250 S
W1112	D-20A	Cincinnati Covered Vegetable	750 S
W1114		Cincinnati Cookie Plate.....	155 S
W1103	D-20A	Cincinnati Leaf Tray.....	140 S

CORNFLOWER GARLAND

MN1712	D-35	Cornflower Garland Dessert Plate.....	65 R
MN1713	D-35	Cornflower Garland Bread & Butter Plate.....	55 R
MN1620	D-35	Cornflower Garland Platter	280 R
MN1701	D-36	Cornflower Garland 12-Lobed Tray - Large.....	155 R

DAGGER MOUNTAIN

S1620		Dagger Mountain Soup Plate.....	50 N
S1621	D-6	Dagger Mountain Dinner Plate.....	105

DRAGON - BLUE

S1740	D-14C	Dragon Blue Five Piece Place Setting.....	205
S1741	D-14C	Dragon Blue Dinner Plate.....	60
S1742A	D-14C	Dragon Blue Dessert Plate w/Cntr.....	50
S1742	D-14C	Dragon Blue Dessert Plate (Blank Cntr)	45
S1742G		Dragon Blue Dessert Plate w/Gold.....	55
S1743	D-14C	Dragon Blue Bread & Butter Plate	35
S1744	D-14C	Dragon Blue Can Tea Cup & Saucer.....	65
S1746	D-14C	Dragon Blue Bowl - Small	115
S1747	D-14C	Dragon Blue Bowl - Large	150
S1748	D-14C	Dragon Blue Oval Platter	195
S1750		Dragon Blue Mug.....	95
S1770LE	D-14C	Dragon Blue Shell Dish	115
S1840	D-14D	Dragon Red Five Piece Place Setting.....	205
S1841	D-14D	Dragon Red Dinner Plate	60
S1842	D-14D	Dragon Red Dessert Plate	45
S1843	D-14D	Dragon Red Bread & Butter Plate.....	35
S1844	D-14D	Dragon Red Can Tea Cup & Saucer.....	65

Item No	Page #	Description	List Price	Item No	Page #	Description	List Price
DRAGON - RED				FAMILLE VERTE - Continued			
S1846		Dragon Red Bowl - Small.....	115 S	Y1683	D-17	Famille Verte Coffeepot.....	255 S
S1847		Dragon Red Bowl - Large.....	150 S	Y1684	D-17	Famille Verte Sugar/Dessert Bowl.....	.95 S
S1848		Dragon Red Oval Platter.....	195 S	Y1685	D-17	Famille Verte Creamer.....	.80 S
S1850		Dragon Red Mug.....	.95	Y1691	D-18	Famille Verte 4 Lobed Cachepot.....	210 R
DUKE of GLOUCESTER				Y1693		Famille Verte Octagonal Tile.....	.45
CW1400	D-21	Duke of Gloucester Five Piece Place Setting.....	455	Y1694		Famille Verte Mustard Pt w/Lid.....	.45
CW1440	D-22	Duke of Gloucester Dinner Asstd. S/4.....	525	Y1703	D-17	Famille Verte Pitcher.....	130 S
CW1460	D-22	Duke of Gloucester Dessert Asstd. S/4.....	440	Y1708	D-18	Famille Verte Master Salt.....	.50 S
CW1465	D-22	Duke of Gloucester Bread & Butter Asstd. S/4.....	380	Y1709	D-16	Famille Verte Shell Dish.....	105 S
CW1470	D-22	Duke of Gloucester Tea Cup & Saucer Asstd. S/4.....	480	Y1697	D-18	Famille Verte Trumpet Vase.....	115 S
CW1472	G-8	Duke of Gloucester Cream Soup & Saucer.....	395 S	Y1688	D-18	Famille Verte Fu Dog Jar.....	560 S
CW1475	D-23	Duke of Gloucester Cereal Asstd. S/4.....	536	Y1702		Famille Verte Fu Dog Jar - Small.....	.340
CW1480	D-22	Duke of Gloucester Rim Soup Asstd. S/4.....	580	Y1718		Famille Verte Square Tray - Small.....	.85
CW1485	D-23	Duke of Gloucester Dessert Bowl.....	130	Y1719		Famille Verte Ashtray - Large.....	110
CW1490	D-23	Duke of Gloucester Pitcher.....	445 S	S2708F		Famille Verte Epergne - Large.....	3,110 S
CW1495	D-21	Duke of Gloucester Demitasse Cup & Saucer.....	115 S	S2709F		Famille Verte Epergne - Small.....	2,750 R
CW1500	D-24	Duke of Gloucester Shell Dish.....	235 S	FITZHUGH CINNABAR			
CW1510	D-22	Duke of Gloucester Tureen/Oval Platter.....	1,840	S2500	D-49	Fitzhugh Cinnabar Five Piece Place Setting.....	170
CW1511	D-22	Duke of Gloucester Tureen Only.....	1,251	S2501	D-49	Fitzhugh Cinnabar Dinner Plate.....	45
CW1520	D-22	Duke of Gloucester Oval Platter.....	625	S2502	D-49	Fitzhugh Dessert Plate.....	40
CW1450	D-22	Duke of Gloucester Octagonal Platter - Small.....	405	S2503	D-49	Fitzhugh Cinnabar Bread & Butter Plate.....	35
CW1523	D-23	Duke of Gloucester Mug.....	.85	S2504	D-49	Fitzhugh Cinnabar Tea Cup & Saucer.....	50
CW1524	D-21	Duke of Gloucester Coffeepot.....	655 S	S2519	D-14D	Fitzhugh Cinnabar Large Dinner Plate.....	55 S
CW1525	D-21	Duke of Gloucester Teapot.....	640 S	S2505		Fitzhugh Cinnabar Rim Soup Plate.....	50
CW1529	D-21	Duke of Gloucester Sugar & Creamer Set.....	685 S	S2506	D-49	Fitzhugh Salad Bowl - Medium.....	135
CW1530	D-21	Duke of Gloucester Creamer.....	185 S	S2507		Fitzhugh Salad Bowl - Large.....	155
CW1535	D-21	Duke of Gloucester Covered Sugar.....	510 S	S2508	D-49	Fitzhugh Cinnabar Oval Platter.....	145 S
CW1540	D-22	Duke of Gloucester Octagonal Platter.....	570 S	S8391		Festival Cinnabar Dinner Plate.....	90 R
CW1580	D-24	Duke of Gloucester Round Salad Bowl.....	345 S	GABRIEL - CURRANT			
CW1585	D-24	Duke of Gloucester Deep Oval Dish.....	345 S	CW2204	D-20B	Gabriel Currant Luncheon Plate.....	50
CW1592	D-23	Duke of Gloucester Ginger Jar.....	820 S	CW2206	D-20B	Gabriel Currant Mug.....	75
EMMELINE				CW2207	D-20B	Gabriel Currant Dinner Plate.....	90
S3000	D-51	Emmeline Five Piece Place Setting.....	185	GABRIEL - GREEN			
S3001	D-51	Emmeline Dinner Plate.....	55	CW2104	D-20B	Gabriel Green Luncheon Plate.....	50
S3002	D-51	Emmeline Dessert Plate.....	40	CW2106	D-20B	Gabriel Green Mug.....	75
S3003	D-51	Emmeline Bread & Butter Plate.....	35	GOLDEN RIM DINNER PLATES			
S3037	D-52	Emmeline Oval Platter - Large.....	175	S5101	D-46F	Gold Lattice Dinner Plate.....	45
S3004	D-51	Emmeline Tea Cup & Saucer.....	.60	S5201	D-46F	Gold Arrowhead Dinner Plate.....	50
S3056	D-52	Emmeline Rim Soup Bowl.....	55	GOLDEN BUTTERFLY			
S3031	D-52	Emmeline Mug.....	.75	M27	D-33	Golden Butterfly Five Piece Place Setting.....	670
S3058	D-52	Emmeline Dessert Bowl.....	.60	M29	D-33	Golden Butterfly Dinner Plate.....	195
FAMILLE VERTE				M29C	D-33	Golden Butterfly Dessert Plate.....	175
Y1670	D-15	Famille Verte Five Piece Place Setting.....	240	M29B	D-33	Golden Butterfly Bread & Butter Plate.....	115
Y1671	D-15	Famille Verte Dinner Plate.....	.75	M30	D-33	Golden Butterfly Tea Cup & Saucer.....	185
Y1672	D-15	Famille Verte Dessert Plate.....	.60	M29A	D-34	Golden Butterfly Rim Soup Plate.....	155
Y1673	D-15	Famille Verte Bread & Butter Plate.....	.40	M31A	D-34	Golden Butterfly Oval Platter.....	510
Y1674	D-15	Famille Verte Can Tea Cup & Saucer.....	.65	M31B	D-34	Golden Butterfly Oval Tureen & Cover.....	965
Y1724		Famille Verte Large Dinner Plate.....	.85 S	M38		Golden Butterfly Demitasse Cup & Saucer.....	115 S
Y1675	D-16	Famille Verte Rim Soup.....	.65	M32	D-34	Golden Butterfly Coffeepot.....	400 S
Y1707		Famille Verte Bouillon Cup & Saucer.....	100	M33	D-34	Golden Butterfly Teapot.....	435 S
Y1676	D-16	Famille Verte Cereal Bowl.....	.90	M34	D-34	Golden Butterfly Sugar & Cover.....	265
Y1679	D-16	Famille Verte Serving Bowl - Large.....	135	M35	D-34	Golden Butterfly Creamer.....	170
Y1680	D-16	Famille Verte Bowl - Small.....	110	M36	D-34	Golden Butterfly Round Bowl.....	480 S
Y1721	D-17	Famille Verte Low Square Bowl.....	205	M36A	D-34	Golden Butterfly Square Bowl.....	450 S
Y1696	D-16	Famille Verte Porringer.....	.65 S	M37	D-34	Golden Butterfly Master Salt.....	110 S
Y1723	D-15	Famille Verte Covered Vegetable.....	810 S	M51		Golden Butterfly Square Tray - Large.....	180
Y1681	D-16	Famille Verte Tureen & Stand.....	795	IMPERIAL BLUE			
Y1701		Famille Verte Sauceboat.....	165 S	CW2400	D-13	Imperial Blue Five Piece Place Setting.....	365
Y1704	D-16	Famille Verte Tureen and Stand - Small.....	475 S	CW2401	D-13	Imperial Blue Dinner Plate.....	100
Y1705	D-17	Famille Verte Chop Plate.....	215 S				
Y1720	D-17	Famille Verte Cookie Tray.....	145 S				
Y1678	D-17	Famille Verte Tea Cup & Saucer.....	.80 S				
Y1706		Famille Verte Large Tea Cup & Saucer.....	.80 S				
Y1698	D-16	Famille Verte Mug.....	.50				
Y1686	D-17	Famille Verte Demitasse Cup & Saucer.....	.70 S				
Y1682	D-17	Famille Verte Teapot.....	235 S				

Item No	Page #	Description	List Price
IMPERIAL BLUE - Continued			
CW2402	D-13	Imperial Blue Dessert Plate.....	85
CW2403	D-13	Imperial Blue Bread & Butter.....	60
CW2404	D-13	Imperial Blue Tea Cup & Saucer Set.....	120
CW2405	D-13	Imperial Blue Rim Soup.....	100
CW2418	D-13	Imperial Blue Scalloped Serving Bowl.....	250
CW2416	D-13	Imperial Blue Dessert Bowl.....	95
CW2426	D-13	Imperial Blue Oval Platter.....	310
CW2424	D-14	Imperial Blue Mug.....	65
CW2406		Imperial Blue Demitasse Cup & Saucer.....	95
CW2407	D-14	Imperial Blue Coffeepot.....	330 S
CW2408	D-14	Imperial Blue Teapot.....	295 S
CW2409	D-14	Imperial Blue Sugar/Consommé Bowl.....	95 S
CW2410	D-14	Imperial Blue Creamer - Small.....	110 S
CW2411	D-13	Imperial Blue Bowl - Large.....	285
CW2412	D-14	Imperial Blue Round Box - Large.....	65
CW2413	D-14	Imperial Blue Round Box - Small.....	35
CW2422	D-14	Imperial Blue Ginger Jar.....	640 S

INDIGO WAVE

S900	D-53	Indigo Wave Five Piece Setting.....	415
S901	D-53	Indigo Wave Dinner Plate.....	120
S902	D-53	Indigo Wave Dessert Plate.....	85
S903	D-53	Indigo Wave Bread & Butter.....	75
S904	D-53	Indigo Wave Tea Cup & Saucer.....	135
S905	D-53	Indigo Wave Rim Soup.....	110
S906	D-54	Indigo Wave Oval Platter.....	250
S907	D-54	Indigo Wave Square Bowl - Large.....	440
S908	D-54	Indigo Wave Square Bowl - Small.....	300
S909	D-54	Indigo Wave Gravy Boat/Stand.....	370
S910	D-54	Indigo Wave Square Canape Tray.....	125
S915	D-54A	Indigo Wave Demitasse Cup & Saucer.....	90
S911	D-54A	Indigo Wave Mug.....	100 S
S912	D-54A	Indigo Wave Tureen & Stand.....	1,900 S
S912T	D-54A	Indigo Wave Tureen Only.....	1,380
S912P	D-54A	Indigo Wave Octagonal Platter.....	545 S
S913	D-54A	Indigo Wave Bamboo Covered Vegetable.....	895 S
S914	D-54A	Indigo Wave Chop Plate.....	220
S925	G-26	Indigo Wave Divina Vase.....	515
S910E	D-54	Indigo Wave Square Canape Tray w/Eagle.....	130 S
S906E	D-54	Indigo Wave Oval Platter w/Eagle.....	285 S
S911E	D-54A	Indigo Wave Mug w/Eagle.....	125 S

LACE

APPLE LACE

S1350	D-46	Apple Lace Five Piece Place Setting.....	250
S1351	D-46	Apple Lace Dinner Plate.....	60
S1352	D-46	Apple Lace Dessert Plate.....	55
S1352A	D-46A	Apple Lace Dessert Plate w/Butterfly Décor.....	70
S1353	D-46	Apple Lace Bread & Butter Plate.....	45
S1354	D-46	Apple Lace Tea Cup & Saucer.....	90
S1356	D-46B	Apple Lace Rim Soup Plate.....	60
S1357	D-46A	Apple Lace Mug.....	75
S1358	D-46E	Apple Lace Dessert Bowl.....	70
S1361	D-46B	Apple Lace Round Bowl.....	175
S1363		Apple Lace Oval Tray - Small.....	65
S1376	D-46B	Apple Lace Oval Platter.....	220
S1377	D-46B	Apple Lace 12-Sided Lobed Tray - Medium.....	125
S1378	D-46B	Apple Lace 12-Sided Lobed Tray - Large.....	185
S1379	D-46D	Apple Lace Tea For Two.....	375
S1379GB	D-46D	Apple Lace Tea For Two Boxed.....	380

BLUE LACE

S1650	D-14	Blue Lace Five Piece Place Setting.....	355
S1651	D-14	Blue Lace Dinner Plate.....	90
S1652	D-14	Blue Lace Dessert Plate.....	75
S1653	D-14	Blue Lace Bread & Butter Plate.....	60
S1654	D-14	Blue Lace Tea Cup & Saucer.....	130
S1655	D-14	Blue Lace Cream Soup & Saucer.....	140

Item No	Page #	Description	List Price
LACE - Continued			
BLUE LACE			
S1656		Blue Lace Rim Soup Plate.....	90
S1657	D-46A	Blue Lace Mug.....	85
S1658	D-46E	Blue Lace Dessert Bowl.....	75
S1661	D-14B	Blue Lace Round Serving Bowl.....	240
S1664		Blue Lace Oval Tray - Small.....	75
S1676	D-14B	Blue Lace Oval Platter.....	270
S1677	D-14B	Blue Lace Pitcher.....	230 S
S2420	D-14B	Blue Lace 12-Sided Lobed Tray - Medium.....	120 S
S2421	D-14B	Blue Lace 12-Sided Lobed Tray - Large.....	185 S
S1679	D-46D	Blue Lace Tea For Two.....	405 S
S1679GB		Blue Lace Tea For Two Boxed.....	415 S

CORNFLOWER LACE

S1450	D-46	Cornflower Lace Five Piece Place Setting.....	250
S1451	D-46	Cornflower Lace Dinner Plate.....	60
S1452	D-46	Cornflower Lace Dessert Plate.....	55
S1452A	D-46A	Cornflower Lace Dessert Plate w/Butterfly Décor.....	70
S1453	D-46	Cornflower Lace Bread & Butter Plate.....	45
S1454	D-46	Cornflower Lace Tea Cup & Saucer.....	90
S1456	D-46B	Cornflower Lace Rim Soup Plate.....	60
S1457	D-46A	Cornflower Lace Mug.....	75
S1458	D-46E	Cornflower Lace Dessert Bowl.....	70
S1461	D-46B	Cornflower Lace Round Serving Bowl.....	175
S1464		Cornflower Lace Oval Tray - Small.....	65
S1476	D-46B	Cornflower Lace Oval Platter.....	220
S1477		Cornflower Lace 12-Sided Lobed Tray - Medium.....	125 S
S1478	D-46B	Cornflower Lace 12-Sided Lobed Tray - Large.....	185 S
S1479	D-46B	Cornflower Lace Tea For Two.....	375 S
S1479GB	D-46D	Cornflower Lace Tea For Two Boxed.....	385 S

GREEN LACE

S1550	D-45	Green Lace Five Piece Place Setting.....	250
S1551	D-45	Green Lace Dinner Plate.....	60
S1552	D-45	Green Lace Dessert Plate.....	55
S1552A	D-46A	Green Lace Dessert Plate w/Butterfly Décor.....	70
S1553	D-45	Green Lace Bread & Butter Plate.....	45
S1554	D-45	Green Lace Tea Cup & Saucer.....	90
S1557	D-46A	Green Lace Mug.....	75
S1556	D-46B	Green Lace Rim Soup Plate.....	60
S1558	D-46E	Green Lace Dessert Bowl.....	70
S1561	D-46B	Green Lace Round Serving Bowl.....	175
S1564		Green Lace Oval Tray - Small.....	65
S1576	D-46B	Green Lace Oval Platter.....	220
S1577		Green Lace 12-Sided Lobed Tray - Medium.....	125 S
S1578		Green Lace 12-Sided Lobed Tray - Large.....	185 S
S1579	D-46D	Green Lace Tea For Two.....	375 S
S1579GB		Green Lace Tea For Two Boxed.....	385 S

PINK LACE

S1250	D-46C	Pink Lace Five Piece Place Setting.....	250
S1251	D-46C	Pink Lace Dinner Plate.....	60
S1252	D-46C	Pink Lace Dessert Plate.....	55
S1253	D-46C	Pink Lace Bread & Butter Plate.....	45
S1254	D-46C	Pink Lace Tea Cup & Saucer.....	90
S1257	D-46C	Pink Lace Mug.....	75
S1256	D-46C	Pink Lace Rim Soup Plate.....	60
S1258	D-46E	Pink Lace Dessert Bowl.....	70
S1261	D-46C	Pink Lace Round Serving Bowl.....	175
S1276	D-46C	Pink Lace Oval Platter.....	220

MANDARIN BOUQUET

W2120	D-19	Mandarin Bouquet Five Piece Place Setting.....	475
W2100	D-19	Mandarin Bouquet Dinner Plate.....	130
W2101	D-19	Mandarin Bouquet Dessert Plate.....	110
W2102	D-19	Mandarin Bouquet Bread & Butter Plate.....	100
W2103	D-19	Mandarin Bouquet Tea Cup & Saucer.....	135

Item No	Page #	Description	List Price	Item No	Page #	Description	List Price
MANDARIN BOUQUET - Continued				SACRED BIRD & BUTTERFLY - Continued			
W2106		Mandarin Bouquet Rim Soup Plate	135	HC633	D-18D	Sacred Bird & Butterfly Shell Dish.....	200 S
W2108		Mandarin Bouquet Dessert Bowl.....	115 S	HC634	D-18D	Sacred Bird & Butterfly Cookie Plate	115
W2111	D-19	Mandarin Bouquet Fruit Saucer.....	95 S	HC647	D-18C	Sacred Bird & Butterfly Cake Plate.....	145 S
W2104	D-20	Mandarin Bouquet Square Bowl.....	600 S	HC648		Sacred Bird & Butterfly Small Sauce Cup	25
W2112		Mandarin Bouquet Covered Vegetable.....	950 S	HC649		Sacred Bird & Butterfly Seder Plate Set.....	295
W2109	D-20	Mandarin Bouquet Oval Platter - Medium.....	275	HC614	D-18B	Sacred Bird & Butterfly Lobed Cachepot.....	320 S
W2110		Mandarin Bouquet Salad Serving Bowl.....	500	HC692	D-18C	Sacred Bird & Butterfly Tea Flask	170 R
W2115	D-20	Mandarin Bouquet Mug.....	100	SYLVANAE			
W2113	D-20	Mandarin Bouquet Demitasse Cup & Saucer.....	85 S	S3100	D-55	Sylvanae Five Piece Place Setting.....	195
W2114	D-20	Mandarin Bouquet Cookie Plate	170 S	S3101	D-55	Sylvanae Dinner Plate.....	55
W2107	D-20	Mandarin Bouquet Lobed Tray.....	90 R	S3102	D-55	Sylvanae Dessert Plate	50
PALMA				S3103	D-55	Sylvanae Bread & Butter Plate	40
S600	D-35	Palma Five Piece Place Setting.....	595	S3104	D-55	Sylvanae Tea Cup & Saucer.....	50
S601	D-35	Palma Dinner.....	135	MALACHITE			
S602	D-35	Palma Dessert.....	95	TD700	D-59	Malachite Four Piece Place Setting.....	295
S602A	D-35	Palma Simple Dessert.....	105	TD701	D-59	Malachite Dinner Plate.....	105
S603	D-35	Palma Bread & Butter Plate	70	TD702	D-59	Malachite Dessert Plate.....	80
S603A	D-35	Palma Wave Bread & Butter Plate.....	70	TD704	D-59	Malachite Tea Cup & Saucer.....	110
S604	D-35	Palma Tea Cup & Saucer	295	TORTOISE			
S611	D-36	Palma Crescent Plate.....	85	TD800	D-59	Tortoise Four Piece Place Setting.....	295
PEACOCK				TD801	D-59	Tortoise Dinner Plate	105
S2700	D-46E	Peacock Four Piece Place Setting	305	TD802	D-59	Tortoise Dessert Plate	80
S2701	D-46E	Peacock Dinner Plate.....	90	TD804	D-59	Tortoise Tea Cup & Saucer	110
S2702	D-46E	Peacock Dessert Plate - Single	70	LAPIS			
S2702A		Peacock Dessert Plate S/4	275	TD900	D-59	Lapis Four Piece Place Setting	295
S2703	D-46E	Peacock Bread & Butter Plate.....	45	TD901	D-59	Lapis Dinner Plate.....	105
S2731	D-46E	Peacock Mug - Single	100	TD902	D-59	Lapis Dessert Plate.....	80
S2731A		Peacock Mug S/4.....	400	TD904	D-59	Lapis Tea Cup & Saucer	110
PROSPERITY				TOBACCO LEAF			
MV1600	D-27	Prosperity Four Piece Place Setting.....	185	Y2335	D-9	Tobacco Leaf Five Piece Place Setting	575
MV1601	D-27	Prosperity Dinner Plate	50	Y2336	D-9	Tobacco Leaf Dinner Plate.....	175
MV1602	D-27	Prosperity Dessert Plate	40	Y2337	D-9	Tobacco Leaf Dessert Plate.....	145
MV1603	D-27	Prosperity Bread & Butter Plate.....	35	Y2338	D-9	Tobacco Leaf Bread & Butter Plate.....	95
MV1604	D-27	Prosperity Can Shaped Mug.....	60	Y2339	D-9	Tobacco Leaf Tea Cup & Saucer.....	160
MV1604B	D-27	Prosperity Saucer for Mug.....	45	Y2340	D-9	Tobacco Leaf Rim Soup Plate	175
MV1605	D-27	Prosperity Rim Soup Plate.....	55	S2371	D-10	Tobacco Leaf Cream Soup & Stand.....	425 S
MV1606	G-2A	Prosperity Tureen.....	485	Y2341	D-10	Tobacco Leaf Tureen.....	1,350
MV1607	D-28	Prosperity Salad Bowl - Large.....	190	Y2341A	D-10B	Tobacco Leaf Platter	515
MV1608	D-28	Prosperity Salad Bowl - Small.....	155	Y2367	D-10	Tobacco Leaf Tureen & Stand - Small	530 S
MV1609	D-28	Prosperity Round Platter/Service Plate	185	Y2364	D-10B	Tobacco Leaf Chop Plate.....	415
MV1610	D-28	Prosperity Oval Platter.....	240	Y2365		Tobacco Leaf Octagonal Platter - Medium.....	415
MV1612	D-28	Prosperity Pot De Creme Set/4.....	300 S	Y2348	D-9	Tobacco Leaf Bowl - Large	475
MV1612A	D-28	Prosperity Pot De Creme Single.....	75 S	Y2349	D-9	Tobacco Leaf Bowl - Small.....	375
MV1613		Prosperity Pot De Creme Saucers Set/4.....	160 S	Y2356	D-10B	Tobacco Leaf Small Mug.....	110
SACRED BIRD & BUTTERFLY				Y2351		Tobacco Leaf Demitasse Cup & Saucer.....	105
HC600	D-18A	Sacred Bird & Butterfly Five Piece Place Setting.....	235	Y2342	D-10A	Tobacco Leaf Teapot	455
HC601	D-18A	Sacred Bird & Butterfly Dinner Plate	65	Y2343	D-10A	Tobacco Leaf Coffeepot.....	500
HC602	D-18A	Sacred Bird & Butterfly Dessert Plate	55	Y2344	D-10A	Tobacco Leaf Covered Sugar	240
HC603	D-18A	Sacred Bird & Butterfly Bread & Butter Plate.....	45	Y2345	D-10A	Tobacco Leaf Creamer.....	165
HC604	D-18A	Sacred Bird & Butterfly Tea Cup & Saucer	75	Y2346	D-9	Tobacco Leaf Master Salt.....	100
HC605	D-18A	Sacred Bird & Butterfly Demi Cup & Saucer.....	55 S	Y2347	D-10B	Tobacco Leaf Cachepot - Large.....	455
HC631	D-18C	Sacred Bird & Butterfly Mug.....	90	Y2358	D-10B	Tobacco Leaf Cachepot - Small	200
HC620		Sacred Bird & Butterfly Large Dinner Plate	70	Y2350		Tobacco Leaf Round Tile.....	100
HC606		Sacred Bird & Butterfly Rim Soup Plate	65	Y2352	D-10A	Tobacco Leaf Oval Tray	125
HC646	D-18C	Sacred Bird & Butterfly Crescent Salad Plate	80 S	Y2353	D-10	Tobacco Leaf Shell Dish	275
SHC618	D-18C	Sacred Bird Cream Soup.....	105 S	Y2354	D-10A	Tobacco Leaf Octagonal Tray	260
HC611	D-18D	Sacred Bird & Butterfly Tureen & Stand.....	815	Y2357	D-10A	Tobacco Leaf Large Ginger Jar	1,875
HC627	D-18B	Sacred Bird & Butterfly Oval Platter	215	Y2360	D-10A	Tobacco Leaf Trumpet Vase.....	300
HC611A	D-18D	Sacred Bird & Butterfly Octagonal Platter.....	270	Y2361	D-10B	Tobacco Leaf Monteith Cachepot	515
HC613	D-18B	Sacred Bird & Butterfly Scalloped Bowl	245	Y2363	D-10A	Tobacco Leaf Leaf Dish - Large.....	385
HC617	D-18C	Sacred Bird & Butterfly Fluted Dessert Bowl.....	110	Y2366	G-7	Tobacco Leaf Fu Dog Jar - Small	535 S
HC628	D-18B	Sacred Bird & Butterfly Square Bowl - Large	240	Y2368	D-10A	Tobacco Leaf Rectangular Tray - Large.....	240 S
HC629	D-18B	Sacred Bird & Butterfly Square Bowl - Small	135				
HC632	D-18C	Sacred Bird & Butterfly Master Salt.....	85 S				

Item No	Page #	Description	List Price	Item No	Page #	Description	List Price
TOBACCO LEAF - Continued				SERVICE PLATES			
S2359	D-10	Tobacco Leaf Pomegranate Box & Stand.....	850 S	HC607		Sacred Bird & Butterfly Service Plate.....	130 N
S2370	D-10	Tobacco Leaf Candy Dish.....	210	MV1609	D-64	Prosperity Service Plate.....	195
S2372	D-10A	Tobacco Leaf Divina Vase.....	1,150	S1545	D-64	Chinoise Blue Service Plate.....	205
S2373		Tobacco Leaf Sandwich Tray.....	240 N	S1705B	D-64	Lace Service Plate - Blue.....	150
S2708A	D-10B	Tobacco Leaf Man Epergne - Large.....	9,000 S	S1705BK	D-64	Lace Service Plate - Black.....	135
S2709A	D-10B	Tobacco Leaf Man Epergne - Small.....	7,500 R	S1705BR	D-64	Lace Service Plate - Brown.....	135
VIRGINIA BLUE				S1705CF	D-64	Lace Service Plate - Cornflower.....	135
CW3600	D-43	Virginia Blue Five Piece Place Setting.....	220	S1705G	D-64	Lace Service Plate - Green.....	135
CW3600A	D-43	Virginia Blue Five PPS w/Cntr B & B.....	210	S1705GA	D-64	Lace Service Plate - Apple.....	135
CW3601	D-43	Virginia Blue Dinner Plate.....	55	S1705GL	D-64	Lace Service Plate - Gold.....	170
CW3602	D-43	Virginia Blue Dessert Plate.....	50	S1705P	D-64	Lace Service Plate - Plum.....	135
CW3603	D-43	Virginia Blue Bread & Butter Plate.....	45	S1705R	D-64	Lace Service Plate - Red.....	135
CW3603A	D-43	Virginia Blue Bread & Butter w/Cntr.....	55	S1705T	D-64	Lace Service Plate - Turquoise.....	135
CW3604	D-43	Virginia Blue Tea Cup & Saucer.....	60	S1705PK		Lace Service Plate - Pink.....	135
CW3606	D-44	Virginia Blue Coupe Soup Plate.....	55 S	S1749	D-63	Blue Dragon Service Plate.....	135
CW3607	D-44	Virginia Blue Salad Bowl.....	195	S2011	D-50	Festival Service Plate - Currant.....	260
CW3608	D-44	Virginia Blue Oval Serving Dish.....	105	S2012	D-50	Festival Service Plate - Green.....	260
CW3609	D-44	Virginia Blue Oval Platter.....	200	S2013	D-50	Festival Service Plate - Blue.....	260
CW3631	D-44	Virginia Blue Mug.....	60	S2014	D-50	Festival Service Plate - Black.....	260
				S2017	D-50	Festival Service Plate - Cinnabar.....	260
				S2378	D-63	Tobacco Leaf Service Plate.....	195
				S2379	D-63	Tobacco Leaf Contempo Service Plate.....	280
				S4032	D-64	Longton Hall Service Plate/Cake Plate.....	100
				S945	D-50	Indigo Wave Service Plate.....	195
				TD201	D-60	Malachite Service Plate.....	225
				TD202	D-60	Tortoise Service Plate.....	225
				TD203	D-60	Lapis Service Plate.....	225
				S1726	D-63	Famille Verte Contempo Service Plate.....	145
				S1622	D-63	Blue Canton Contempo Service Plate.....	145
				S610	D-63	Palma Service Plate.....	195
				S107	D-63	Blue Shou Service Plate.....	110
				S1706B	D-63	Labyrinth Blue Service Plate.....	135
				S609	D-63	Palma Wave Service Plate.....	195

PRICE LIST 2020-2021



GIFTWARE & DECORATIVE ACCESSORIES

N = New Item
S = Special Order
R = Retired with Stock

Warehouse & Accounts
5 Corporate Drive
Cranbury, NJ 08512
Phone: 609.409.1490
Order: 1.800.443.8225
Fax: 609.409.6702

New York City Showroom
41 Madison Avenue, 21st Floor
New York, NY 10010
Phone: 212.685.3050
Phone: 800.242.3050
Fax: 212.213.3978 www.mottahedeh.com

Prices are retail subject to usual trade discount. F.O.B. Mottahedeh Warehouse Cranbury, NJ.

PRICES ARE SUBJECT TO CHANGE WITHOUT NOTICE. Dinnerware patterns are listed in alphabetical order. Accessories are listed by item number within each pattern heading. Items shown in the catalogue but not listed on this price list have been discontinued.

Item No	Page #	Description	List Price	Item No	Page #	Description	List Price
IN ALPHABETICAL ORDER				IN ALPHABETICAL ORDER - Continued			
U6681	G-19	3 Lady Creamware Candlestick.....	320	S5213	G-12	Chelsea Rabbit Box - Lg.	155
S916E		American Eagle Round Eagle Box.....	95	S5214	G-12	Chelsea Rabbit Box - Sm.	105
S1830	G-5	American Ship Constitution Oval Tray	50	F6516	G-8	Chestnut Leaf Coupe w/Saucer.....	110 R
S1835	G-5	American Ship Constitution Pitcher.....	170	S4097	G-20	Chinese Figurines (Pair)	855
S1831	G-5	American Ship Constitution Shell Dish.....	95	S6202	G-19	Chinese Handled Lg Vase w/Cover	425
S1834	G-5	American Ship Constitution Sm Sq Bowl.....	85	S6204	G-19	Chinese Open Creamware Vase.....	255
S1981B		American Ship Luncheon - USS Constitution.....	45	R1503RB	G-27	Classic Vase, Red & Black	785
S1981	G-5	American Ship Luncheons, s/6.....	215	R1503VB	G-27	Classic Vase, Verdigris & Blue.....	785
S1980A	G-5	American Ship Mug - USS Chesapeake.....	50	R1503WG	G-27	Classic Vase, White & Gray.....	785
S1980B	G-5	American Ship Mug - USS Constitution.....	50	MS4155		Cobalt Blossom Teapot	45 R
S1980C	G-5	American Ship Mug - USS Flying Cloud.....	50	S5247	G-16	Cockatoos Pair, Handpainted.....	365 S
S1980F	G-5	American Ship Mug - USS Massachusetts.....	50	S1412	G-26	Colonial Eagle Box Lg.....	155 R
S1980D	G-5	American Ship Mug - USS Nightingale.....	50	S1413	G-26	Colonial Eagle Cachepot Small.....	105 R
S1980E	G-5	American Ship Mug - USS Yorkshire of NY.....	50	CW2620		Creamware Tray "The Best"	75
S1980	G-5	American Ship Mugs s/6.....	295	S8002S	G-2B	Curly Pine Canapé Plates S/4	200
S1986	G-5	American Ship Open Cider Jug, USS Constitution..	215 S	S8002	G-2B	Curly Pine Canapé Single	50
U6524	G-22	Artichoke Box.....	195	S1621	D-4	Dagger Mountain Plate.....	105
S4400	G-22	Artichoke Tureen	195	DM1867	G-15	Dallas Museum Carp Platter - Lg.....	540
TD301	G-13	Artichoke Tureen w/Stand.....	600 R	DM1866	G-15	Dallas Museum Carp Platter - Sm.....	255
S6449	G-13	Artichokes Centerpiece.....	1,575	DM1868	G-15	Dallas Museum Carp Shell Dish.....	185
S6469	G-13	Artichokes Small Bunch Triple.....	375	S4086	G-22	Dancing Creamware Monkeys.....	950
S4088		Bamboo Candlestick Creamware Triple	200	WH12D		Diplomatic Eagle Box	105
HC241	G-2	Bamboo Covered Jar.....	205 S	WH6D	G-6	Diplomatic Eagle Cachepot.....	285 S
HC240	G-2	Bamboo Open Vase	165	S1500	G-6	Diplomatic Eagle Mug.....	50
S4087		Bamboo Vase Creamware Triple.....	235	WH1D	G-6	Diplomatic Eagle Oval Tray	70
CW6000	G-1	Bassett Hall Bowl.....	1,155	WH10D	G-6	Diplomatic Eagle Pitcher.....	170
F6684	G-17	Bird Tureen & Stand, Creamware - Sm.....	320 S	WH8D	G-6	Diplomatic Eagle Plate	100
F6683	G-17	Bird Tureen & Stand, Creamware - Lg	725 S	WH2D	G-6	Diplomatic Eagle Shell Dish	110
NT2419	G-3	Blue & White Clivedon Punch Bowl.....	1,040 S	WH5D	G-6	Diplomatic Eagle Square Bowl - Sm.....	100 S
Y1627	G-4	Blue & White Floral Cachepot.....	435 S	WH9D		Diplomatic Eagle Tea Cup & Saucer.....	125
Y8400	G-3	Blue & White Monteith Bowl.....	645 S	WH4D	G-6	Diplomatic Eagle Trumpet Vase.....	265
S1629	D-7	Blue & White Salt & Pepper Set.....	90	S4082	G-21	Dolphin Creamware Candlestick	125
S189		Blue Canton Lobed Dish.....	125	S4083	G-21	Dolphin Creamware Centerpiece.....	235
HC196	G-7	Blue Canton Rectangular Covered Box - Lg.....	140 S	S2982	G-2	Eagle Platter - Sm.....	200 S
HC195	G-7	Blue Canton Rectangular Covered Box - Med.....	100 S	S2984		Eagle Shell Dish.....	220 S
HC82	G-7	Blue Canton Rectangular Covered Box - Sm.....	60 R	S5255	G-16	Exotic Birds Pair, Majolica, Handpainted	275 S
HC78	G-7	Blue Canton Rectangular Tray - Lg.....	75	S1724	G-1	Famille Rose Round Punch Bowl.....	815 S
HC77	G-8A	Blue Canton Rectangular Tray - Sm.....	55	S1880		Famille Verte 5 Lobed Cachepot (Wufu Shape)	675 S
HC79	G-7	Blue Canton Shang Vase	120	Y1688	G-7	Famille Verte Fu Dog Jar	560
CW3420	G-16	Brighton Pavillion Birds, Pair	1,450 S	Y1702		Famille Verte Fu Dog Jar - Sm.....	340
U6216	G-17	Bulldogs Brown Collar, Pair	775	Y1719		Famille Verte Tray - Lg.....	110
S1252A	D-46A	Butterfly Dessert Golden Teardrop Border.....	70 S	Y1718		Famille Verte Tray - Sm.....	85
S1252ALB	D-46A	Butterfly Dessert, Boxed Set/4 Asstd Lace Bdr.....	280 S	MS4163		Fern Dessert Plate	20 R
S420		Butterfly Leaf Dish	455 R	S6203	G-19	Figure Square Tea Jar w/Cover.....	425
S2991	G-2	Butterfly Platter - Sm.....	225	S6208	G-19	Footed Octagonal Urn w/Cover.....	300
S2993	G-2	Butterfly Shell Dish.....	220	MP1210	G-25	Globe Mug.....	55 S
R1502VB	G-27	Calalily Vase, Verdigris & Blue.....	785	MP1212	G-25	Globe Rectangular Tray - Lg.....	80 S
R1502WG	G-27	Calalily Vase, White & Gray.....	785	MP1211	G-25	Globe Rectangular Tray - Sm.....	45 S
R1502RB	G-27	Callalily Vase, Red & Black	785	MP1213	G-25	Globe Square Plate	75 S
S2980	G-15	Carp Tureen	5,885 S	S6207		Grape Leaf Bowl.....	225
MS3612		Celadon Oval Box.....	24 R	S6206		Grape Leaf Tureen w/Stand	750
MS3614		Celadon Rectangular Box.....	24 R	G1410	G-26	Grossman Eagle Box - Lg.....	180 R
S1720	G-2	Ch'ien Lung Bowl	295 S	W8490A	G-1	Hong Bowl Only	1,950 S
U6537		Chatsworth Terriers, Pair.....	1,625	S4157	G-13	Ibis & Lotus Compote.....	380
U6538	G-4	Chatsworth Tulipiere - Sm.....	1,345	S910E	G-26	Indigo Wave Canapé Tray with Eagle.....	140
U6535	G-4	Chatsworth Tulipiere - Lg.....	4,175 S	S925	G-26	Indigo Wave Divina Vase	525

Item No	Page #	Description	List Price	Item No	Page #	Description	List Price
IN ALPHABETICAL ORDER				IN ALPHABETICAL ORDER - Continued			
S906E	G-26	Indigo Wave Eagle Platter.....	285	TD411	G-14	Round Cachepot Black & Gold - Lg.....	285
S911E	G-26	Indigo Wave Mug with Eagle.....	135	TD412	G-14	Round Cachepot Black & Gold - Sm.....	235
TD212	D-60	Lapis Canapé Plate - Coaster.....	38	S6505	G-20	Round Embossed Cachepot, White.....	125
S4136		Leaf Majolica Double Plate w/Nuts.....	325	S4030	G-20	Sheffield Handled Centerpiece.....	230
S4135		Leaf Majolica Plate w/Nuts.....	245	S4084	G-21	Shell & Dolphin Centerpiece - Med.....	155
CW3202	G-9	Leaping Reindeer Dessert Plate.....	50	S4080	G-19	Square Sheffield Candlestick.....	145
CW3205	G-9	Leaping Reindeer Rectangular Tray.....	95	S8003S	G-2B	Stone Canapé Plates Set Of 4.....	200
CW3203	G-9	Leaping Reindeer Square Tray.....	120	S8003	G-2B	Stone Canapé Single.....	50
CW3204	G-9	Leaping Reindeer Mug.....	95	S5218	G-12	Strawberry Strainer Set.....	95
U6528	G-13	Lettuce Box & Stand.....	315	R1504RB	G-27	Sung Vase, Red & Black.....	785
U6522	G-13	Lettuce Tureen & Stand - Lg.....	660	R1504VB	G-27	Sung Vase, Verdigris & Blue.....	785
S4455	G-21	Lewis Tureen.....	350	R1504WG	G-27	Sung Vase, White & Gray.....	785
S4196	G-17	Lion Tureen & Stand.....	855	S6210	G-19	Tall Jar w/Greek Key & Cover.....	400
S4032	G-18	Longton Hall Cake Plate.....	100	Y2366	G-7	Tobacco Leaf Fu Dog Jar.....	535
S4034	G-18	Longton Hall Cookie Plate.....	125	TD211	D-60	Tortoise Canapé Plates - Coaster.....	38
S4031	G-18	Longton Hall Dessert Plate.....	50	MS6517		Tulip Cup & Saucer S/4.....	55
S4033	G-18	Longton Hall Oval Basket.....	180	S6201	G-19	Urn w/Latticework & Pineapple Lid.....	525
S6809	G-12	Lotus Majolica Green w/Floral Pitcher.....	280	S4875	D-5	Vung Tau Blue & White Mini Vase.....	55
S2474	G-2A	Lowestoft Garden Cup & Saucer S/4.....	320	S6209	G-19	Wall of China Covered Jar.....	350
S2474CS	G-2A	Lowestoft Garden Cup & Saucer Single.....	80	S8001S	G-2B	Walnut Burl Canapé Plates S/4.....	200
S2472	G-2A	Lowestoft Garden Dessert S/4.....	260	S8001	G-2B	Walnut Burl Canapé Single.....	50
S2472A	G-2A	Lowestoft Garden Dessert Single.....	65	NZ2500		Wheat Sheaf Vase.....	285
R1501VB	G-27	Lozenge Vase, Verdigris & Blue.....	785	S4324	G-20	White Monkey Bookends Pair.....	165
R1501WG	G-27	Lozenge Vase, White & Gray.....	785	S6446		White Oval Base Candlestick.....	130
R1501RB	G-27	Lozenges Vase, Red & Black.....	785	MP1207	G-25	World Map Rectangular Tray - Lg.....	80
TD210	D-60	Malachite Canapé Plate - Coaster.....	38	MP1206	G-25	World Map Rectangular Tray - Sm.....	45
S2988	G-2	Mallard Platter - Sm.....	185	MP1208	G-25	World Map Square Plate.....	80
S2990	G-2	Mallard Shell Dish.....	220	S1730		Wufu Cachepot.....	710
MP1205	G-25	Maps Mug.....	55	S1731	G-2A	Wufu Peach Low Bowl.....	350
TD402	G-14	Matte Black Plate Lobed w/Gold.....	130				
S4401	G-21	Medallion Basket.....	275				
S2739LE		Melon Box.....	500				
S6547	G-12	Melon Box w/Stand, Majolica.....	225				
TD302	G-14	Melon Tureen Matte White & Gold & Stand.....	350				
S6546	G-12	Melon Tureen w/Stand, Majolica.....	450				
Y1625	G-4	Metropolitan Low Square Blue & White Bowl.....	180				
S2974	G-3	Monteith Cachepot - Cobalt & Gold.....	1,585				
S8000	G-2B	Multi Canapé Plates S/4.....	200				
S6200	G-19	Napolean Creamware Candlestick.....	195				
MP1200	G-25	New York Harbor Map Mug.....	55				
MP1201	G-25	New York Harbor Map Rectangular Tray - Sm.....	45				
MP1202	G-25	New York Harbor Rectangular Tray - Lg.....	80				
MP1203	G-25	New York Harbor Square Plate.....	75				
TD408	G-14	Noble Stag Compote Matte Black - Sm.....	250				
TD409	G-14	Noble Stag Tureen Matte Black - Lg.....	625				
S807	G-13	Nutleaf Cake Plate.....	180				
S802	G-13	Nutleaf Dessert Plate S/4.....	325				
S804	G-13	Nutleaf Tea Cup & Saucer S/4.....	400				
S8004S	G-2B	Oriental Blue Canapé Plates.....	200				
S8004	G-2B	Oriental Blue Canapé Single.....	50				
R1505YB	G-28	Orion Barrel Jar, Gold & Brown.....	585				
R1507YB	G-28	Orion Compote Gold & Brown.....	360				
R1507VB	G-28	Orion Compote Verdigris & Blue.....	360				
R1506YB	G-28	Orion Ewer Gold & Brown.....	660				
R1507YBF	G-28	Orion Flower Bowl w/Frog Gold & Brown.....	370				
TD410	G-14	Oval Cachepot Black & Gold.....	290				
S6500	G-20	Oval Cachepot w/Handles, White.....	130				
S5259	G-16	Parakeets Pair, Majolica, Handpainted.....	250				
R1510SB	G-28	Pine Cone Rectangular Platter, Salmon & Brown.....	575				
R1508SB	G-28	Pine Cone Square Tray - Sm, Salmon & Brown.....	245				
R1509SB	G-28	Pine Cone Square Tray, Salmon & Brown - Lg.....	315				
S4052		Pinecone Octagonal Bowl.....	15				
S4054		Pinecone Octagonal Luncheon Plate.....	25				
S4053		Pinecone Octagonal Platter.....	45				
S4051		Pinecone Octagonal Tureen.....	100				
S4605E	G-18	Pot A Cream Single.....	46				
S4605B	G-18	Pot A Crème S/4.....	185				
S4617A		Pot A Crème Saucer Only.....	30				
S4617	G-18	Pot A Crème Saucers Only, S/4.....	120				
S4605A		Pot A Crème Tray.....	70				
S4092	G-22	Queensware Heart Shaped Server.....	95				
S2986	G-15	Rooster Platter - Sm.....	185				

Item No	Page #	Description	List Price	Item No	Page #	Description	List Price
IN NUMERICAL ORDER				IN NUMERICAL ORDER - Continued			
CW2620		Creamware Tray "The Best"	75	S1830	G-5	American Ships Constitution Oval Tray.....	50
CW3202	G-9	Leaping Reindeer Dessert Plate	50	S1831	G-5	American Ship Constitution Shell Dish	95
CW3203	G-9	Leaping Reindeer Square Tray	120	S1834	G-5	American Ship Square Bowl - Small.....	85
CW3204	G-9	Leaping Reindeer Mug.....	95	S1835	G-5	American Ship Constitution Pitcher.....	170
CW3205	G-9	Leaping Reindeer Rectangular Tray	95	S1880		Famille Verte Cachepot (Wufu Shape).....	675 S
CW3420	G-16	Brighton Pavilion Birds - Pair	1,450 S	S189		Blue Canton Lobed Dish	125
CW6000	G-1	Bassett Hall Bowl.....	1,155	S1980	G-5	American Ship Mugs S/6	295
DM1866	G-15	Dallas Museum Carp Platter - Small	255	S1980A	G-5	American Ship Mug - USS Chesapeake.....	50
DM1867	G-15	Dallas Museum Carp Platter - Large	540	S1980B	G-5	American Ship Mug - USS Constitution.....	50
DM1868	G-15	Carp Shell Dish	185	S1980C	G-5	American Ship Mug - USS Flying Cloud	50
F6516	G-8	Chestnut Leaf Coupe w/Saucer	110 R	S1980D	G-5	American Ship Mug - USS Nightingale.....	50
F6683	G-17	Bird Tureen & Stand, Creamware - Large	725 S	S1980E	G-5	American Ship Mug - USS Yorkshire NY	50
F6684	G-17	Bird Tureen & Stand, Creamware - Small	320 S	S1980F	G-5	American Ship Mug - USS Massachusetts.....	50
G1410	G-26	Grossman Eagle Box - Large	180 R	S1981	G-5	American Ship Luncheons - S/6	215
HC77	G-8A	Blue Canton Rectangular Tray - Small	55	S1981B		American Ship Luncheon - USS Constitution	45
HC78	G-7	Blue Canton Rectangular Tray - Large	75	S1986	G-5	American Ship Open Cider Jug - USS Constitution....	215 S
HC79	G-7	Blue Canton Shang Vase	120	S2472	G-2A	Lowestoft Garden Dessert S/4	260
HC82	G-7	Blue Canton Rectangular Covered Box -Sm.....	60 R	S2472A	G-2A	Lowestoft Garden Dessert - Single	65
HC195	G-7	Blue Canton Rectangular Box - Medium.....	100 S	S2474	G-2A	Lowestoft Garden Tea Cup & Saucer S/4	320
HC196	G-7	Blue Canton Rectangular Box - Large	140 S	S2474CS	G-2A	Lowestoft Garden Tea Cup & Saucer, Single	80
HC240	G-2	Bamboo Open Vase	165 S	S2739LE		Melon Box	500
HC241	G-2	Bamboo Covered Jar.....	205 S	S2974	G-3	Monteith Cachepot - Cobalt & Gold.....	1,585 S
MP1200	G-25	New York Harbor Mug.....	55 S	S2980	G-15	Carp Tureen	5,885 S
MP1201	G-25	New York Harbor Rect. Tray - Small.....	45 S	S2982	G-2	Eagle Platter - Small.....	200 S
MP1202	G-25	New York Harbor Rect. Plate - Large	80 S	S2984		Eagle Shell Dish.....	220 S
MP1203	G-25	New York Harbor Square Plate	75 S	S2986	G-15	Rooster Platter - Small.....	185 S
MP1205	G-25	Maps Mug.....	55 S	S2988	G-2	Mallard Platter - Small	185 S
MP1206	G-25	World Map Rect. Tray - Small	45 S	S2990	G-2	Mallard Shell Dish	220
MP1207	G-25	World Map Rect. Plate - Large.....	80 S	S2991	G-2	Butterfly Platter - Small.....	225 S
MP1208	G-25	World Map Square Plate - Lg.....	80 S	S2993	G-2	Butterfly Shell Dish.....	220 S
MP1210	G-25	Globe Mug.....	55 S	S4030	G-20	Sheffield Handled Centerpiece	230
MP1211	G-25	Globe Rectangular Tray - Small.....	45 S	S4031	G-18	Loughton Hall Dessert Plate.....	50
MP1212	G-25	Globe Rectangular Plate - Lg.....	80 S	S4032	G-18	Loughton Hall Cake Plate.....	100
MP1213	G-25	Globe Square Plate - Large.....	75 S	S4033	G-18	Loughton Hall Oval Basket	180
MS3612		Celadon Oval Box.....	24 R	S4034	G-18	Loughton Hall Cookie Plate.....	125
MS3614		Celadon Rectangular Box.....	24 R	S4051		Pinecone Octagonal Tureen.....	100
MS4155		Cobalt Blossom Teapot.....	45 R	S4052		Pinecone Octagonal Bowl - Small	15
MS4163		Fern Dessert Plate	20 R	S4053		Pinecone Octagonal Platter	45
MS6517		Tulip Cup & Saucer S/4.....	55 R	S4054		Pinecone Octagonal Luncheon Plate.....	25
NT2419	G-3	Blue & White Clivedon Punch Bowl.....	1,040 S	S4080	G-19	Square Sheffield Candlestick	145
NZ2500		Wheat Sheaf Vase	285	S4082	G-21	Dolphin Candlestick.....	125
R1501RB	G-27	Lozenge Red & Black	785	S4083	G-21	Dolphin Centerpiece.....	235
R1501VB	G-27	Lozenge Verdigris & Blue	785	S4084	G-21	Shell & Dolphin Centerpiece - Medium	155
R1501WG	G-27	Lozenge White & Gray.....	785	S4086	G-22	Dancing Creamware Monkeys.....	950
R1502RB	G-27	Callalily Red & Black	785	S4087		Bamboo Vase Creamware Triple.....	235
R1502VB	G-27	Callalily Verdigris & Blue	785	S4088		Bamboo Candlestick Creamware Triple.....	200
R1502WG	G-27	Callalily White & Gray.....	785	S4092	G-22	Queensware Heart Shaped Server.....	95 R
R1503RB	G-27	Classic Red & Black	785	S4097	G-20	Chinese Figurines, Pair.....	855
R1503VB	G-27	Classic Verdigris & Blue	785	S4135		Leaf Plate with Nuts Single	245
R1503WG	G-27	Classic White & Gray	785	S4136		Leaf Plate with Nuts Double	325
R1504RB	G-27	Sung Red & Black	785	S4157	G-13	Ibis & Lotus Compote	380
R1504VB	G-27	Sung Verdigris & Blue.....	785	S4196	G-17	Lion Tureen & Stand.....	855
R1504WG	G-27	Sung White & Gray.....	785	S420		Butterfly Leaf Dish	455 R
R1505YB	G-28	Orion Barrel Brown & Gold	585	S4324	G-20	White Monkey Bookends, Pair.....	165
R1506YB	G-28	Orion Ewer Brown & Gold.....	660	S4400	G-22	Artichoke Tureen	195
R1507VB	G-28	Orion Compote Verdigris & Blue.....	360	S4401	G-21	Medallion Basket	275
R1507YB	G-28	Orion Compote Gold & Brown	370	S4455	G-21	Lewis Tureen.....	350
R1507YBFB	G-28	Orion Flower Bowl w/Frog	370	S4605A		Pot A Crème Tray	70 R
R1508SB	G-28	Pine Cone Sm. Square Tray	245	S4605B	G-18	Pot A Crème Set/4.....	185
R1509SB	G-28	Pine Cone Lg. Square Tray.....	315	S4605E	G-18	Pot A Crème Single.....	46
R1510SB	G-28	Pine Cone Rectangular Platter	575	S4617	G-18	Pot A Crème Saucers Only S/4.....	120
S1252A		Butterfly Dessert Golden Teardrop Border.....	70 S	S4617A		Pot A Crème Saucer Only.....	30
S1252ALB		Butterfly Dessert, Boxed Set/4 Assted Lace Bdr..	280 S	S4875	D-5	Vung Tau Blue & White Mini Vase.....	55 S
S1412	G-26	Colonial Eagle Box Lg.....	155 R	S5213	G-12	Chelsea Rabbit Box - Large	155
S1413	G-26	Colonial Eagle Cachepot Small	105 R	S5214	G-12	Chelsea Rabbit Box - Small	105
S1500	G-6	Eagle Mug.....	50	S5218	G-12	Strawberry Strainer Set.....	95
S1621	D-4	Dagger Mountain Plate.....	105	S5247	G-16	Cockatoos, Pair, Handpainted.....	365 S
S1629	D-7	Blue & White Salt & Pepper Set.....	90	S5255	G-16	Exotic Birds, Pair, Majolica, Handpainted	275 S
S1720	G-2	Ch'ien Lung Bowl	295 S	S5259	G-16	Parakeets, Pair, Majolica, Handpainted.....	250 S
S1724	G-1	Famille Rose Round Punch Bowl.....	815 S	S6200	G-19	Creamware Napoleon Candlestick.....	195
S1730		Wufu Cachepot.....	710 S	S6201	G-19	Urn w/Latticework & Pineapple Lid.....	525
S1731	G-2A	Wufu Peach Low Bowl.....	350	S6202	G-19	Chinese Handled Lg Vase w/Cover.....	425

Item No	Page #	Description	List Price	Item No	Page #	Description	List Price	
IN NUMERICAL ORDER - Continued				RING TRAYS				
S6203	G-19	Figure Square Tea Jar w Cover	425	CW2428	D-14B	Imperial Blue Ring Tray - No Text.....	40	
S6204	G-19	Chinese Open Creamware Vase.....	255	CW250B	G-10	Trifling is My Gift	40	
S6206		Grape Leaf Tureen & Stand.....	750	CW250R	G-10	Remember Me - Red	40	
S6207		Grape Leaf Bowl.....	225	CW251	G-10	As Time Flies Let Friendship Stay.....	40	
S6208	G-19	Footed Octagonal Urn w/Cover.....	300	CW2600	G-10A	The Greatest Pleasure I Find is in My Garden.....	40	
S6209	G-19	Wall of China Covered Jar	350	CW2601	G-10A	Rebus: Happiness Make Your Garden a Paradise.....	40	
S6210	G-19	Tall Jar w/Greek Key & Cover.....	400	CW2602	G-10A	Carpe Diem.....	40	
S6446		White Oval Base Candlestick	130	CW2603	G-10A	Follow After the Things Which Make For Peace.....	40	
S6449	G-13	Artichokes Centerpiece	1,575	CW2604	G-10	Tis Liberty of Choice That Sweetens Life	40	
S6469	G-13	Artichokes Small Bunch - Triple	375	CW2605	G-10	A Faithful Friend is a Strong Defense	40	
S6500	G-19	Oval Cachepot w/Handles, White	130	CW2606	G-10	Love Bears All Things, Hopes All, Endures All Things	40	
S6505	G-19	Round Embossed Cachepot, White.....	125	CW2607	G-10A	Knowledge is Power.....	40	
S6546	G-12	Melon Tureen w/Stand, Majolica.....	450	R	CW2608	G-10A	Energy and Persistence Conquer All Things.....	40
S6547	G-12	Melon Box w/Stand, Majolica	225	R	CW2609	G-10	For Christmas Comes But Once a Year	40
S6809	G-12	Lotus Majolica Green w/Floral Pitcher.....	280	S	CW2610	G-10	Take Care!	40
S8000	G-2B	Multi Canapé Plates Set of 4	200	CW2611	G-10	Many The Stars I See Yet in My Sight No Star Like Thee	40	
S8001	G-2B	Walnut Burl Canapé Plate Single	50	CW2612	G-10A	Love Unites Us	40	
S8001S	G-2B	Walnut Burl Canapé Plates Set of 4.....	200	CW2613	G-10A	The Present Fashion...that Foolish Passion.....	40	
S8002	G-2B	Curly Pine Canapé Plate Single.....	50	CW2614	G-10A	The Best is Not Too Good For You	40	
S8002S	G-2B	Curly Pine Canapé Plates Set of 4.....	200	CW2615	G-10A	A Little Rebellion Now and Then is A Good Thing	40	
S8003	G-2B	Stone Canapé Plate Single.....	50	CW2617	G-10B	Tho Absent...Not Forgotten.....	40	
S8003S	G-2B	Stone Canapé Plates Set of 4	200	CW2618	G-10B	For Kindness Received.....	40	
S8004	G-2B	Oriental Blue Canapé Plate Single.....	50	CW2619	G-10B	Beloved By All...But Most by Me	40	
S8004S	G-2B	Oriental Blue Canapé Plates Set of 4	200	CW2622	G-10B	While There Is Tea	40	
S802	G-13	Nutleaf Dessert Plate - Set of 4	325	S	MN1705	G-9	J'aime et J'espere, Th. Jefferson.....	40
S804	G-13	Nutleaf Tea Cup & Saucer Set of 4	400	S	MN1706		Cornflower Ring Tray - No Text	40
S807	G-13	Nutleaf Cake Plate.....	180	S	MN1707	G-9	Music...Passion of My Soul, Th. Jefferson	40
S906E	G-26	Indigo Wave Eagle Platter	285	MN1708	G-9	Good Faith is Everyman's Smart Guide, Th. Jefferson.....	40	
S910E	G-26	Indigo Wave Canapé Tray with Eagle.....	140	MN1709	G-9	Knowledge Indeed is a Desirable, Th. Jefferson.....	40	
S911E	G-26	Indigo Wave Mug with Eagle.....	135	MN1725	G-9	I Cannot Live Without Books (Rect), Th. Jefferson	40	
S916E		American Eagle Round Eagle Box.....	95	MN1730	G-9	I Cannot Live Without Books (Oval), Th. Jefferson	40	
S925	G-26	Indigo Wave Divina Vase	525	MV1800	G-10B	Friendship Is A Plant, G. Washington	40	
TD210	D-60	Malachite Canapé Plate - Coaster.....	38	MV1801	G-10B	Liberty Is A Plant, G. Washington	40	
TD211	D-60	Tortoise Canapé Plate - Coaster	38	S1988	G-10B	I Like My Choice	40	
TD212	D-60	Lapis Malachite Canapé Plate - Coaster.....	38	R	S2350	G-11	Diplomatic Eagle (Rust Border) - No Text.....	40
TD301	G-13	Artichoke Tureen w/Stand	600	R	S2801	G-10	Familiar Acts Are Beautiful Through Love	40
TD302	G-14	Melon Tureen Matte White & Gold & Stand.....	350	S2802	G-10	A Strong Man Masters	40	
TD402	G-14	Matte Black Plate Lobed w/Gold.....	130	S2803	G-10	Families Are Like Fudge, Mostly Sweet With Some Nuts.....	40	
TD408	G-14	Noble Stag Compote Matte Black Sm.....	250	S2804	G-10	Great is The Man Who Has Not Lost His Child-Like Heart	40	
TD409	G-14	Noble Stag Tureen Matte Black Lg	625	S2805	G-10A	Mother Thank You For The Gift of Wisdom and Love.....	40	
TD410	G-14	Oval Cachepot Black & Gold.....	290	S2806	G-10A	Father Thank You for Your Broad Shoulders	40	
TD411	G-14	Round Cachepot Black & Gold Lg	285	S2807	G-10A	Sister Thanks for Being My Best Friend	40	
TD412	G-14	Round Cachepot Black & Gold Sm.....	235	S2808	G-10A	Brother It's Great to Know You Are in My Court.....	40	
U6216	G-17	Bulldogs Brown Collar (Pair).....	775	S2809	G-10	In Golf, As In Life, It's The Follow Through (Gentlemen)....	40	
U6522	G-13	Lettuce Tureen & Stand - Large	660	S2810	G-9	A Mother's Love	40	
U6524	G-22	Artichoke Box	195	S2811	G-9	Golf Club, Follow Through	40	
U6528	G-13	Lettuce Box & Stand.....	315	S2812	G-9	A Heart That Loves is Always Young.....	40	
U6535	G-4	Chatsworth Tulipiere - Large	4,175	S	S2813	G-9	Love Knows No Bounds.....	40
U6537		Chatsworth Terriers, Pair	1,625	S2814	G-9	There is No Friend as Loyal as a Book.....	40	
U6538	G-4	Chatsworth Tulipiere - Sm.....	1,345	S2815	G-9	I'd Just as Soon Play Tennis with the Net Down.....	40	
U6681	G-19	3 Lady Creamware Candlestick	320	S2816	G-9	A House is Not a Home Without a Pet	40	
W8490A	G-1	Hong Bowl Only.....	1,950	S	S2817	G-9	Family is The Gift That Lasts Forever	40
WH10D	G-6	Diplomatic Eagle Pitcher	170	S2819	G-11	There Are Two Kinds Of People...Irish.....	40	
WH12D		Diplomatic Eagle Box	105	S2820	G-11	Golf As In Life...Follow Thru Matters	40	
WH1D	G-6	Diplomatic Eagle Oval Tray	70	S2821		I Left My Heart In San Francisco	40	
WH2D	G-6	Diplomatic Eagle Shell Dish	110	S2822	G-11	Nuts...Don't Shake The Tree	40	
WH4D	G-6	Diplomatic Eagle Trumpet Vase.....	265	S2823	G-11	Love Between Mother & Daughter Is Forever	40	
WH5D	G-6	Diplomatic Eagle Square Bowl - Small.....	100	S	S2824	G-11	A Friend With Chocolate	40
WH6D	G-6	Diplomatic Eagle Cachepot	285	S	S2825	G-10B	Knowledge Speaks but Wisdom Listens, Rectangular	40
WH8D	G-6	Diplomatic Eagle Plate.....	100	S2826	G-12	Believe You Can and You're Halfway There, T. Roosevelt....	40	
WH9D		Diplomatic Eagle Tea Cup & Saucer.....	125	S2827	G-12	Never Give Up...Sports...Rectangular.....	40	
Y1625	G-4	Metropolitan Low Square Bowl	180	S	S2828	G-10B	As You Walk The Fairway Of Life, Rectangular.....	40
Y1627	G-4	Blue & White Floral Cachepot	435	S	S2829	G-11	My Favorite Breed is Adopted.....	40
Y1688	D-18	Famille Verte Fu Dog Jar	560	S	S2830	G-11	Rescue, Save, Love.....	40
Y1702		Famille Verte Fu Dog Jar - Small.....	340	S2833	G-11	If You Truly Love Nature	40	
Y1718		Famille Verte Square Tray - Small	85	S2834	G-12	Those Who Dare to Fail, John F. Kennedy.....	40	
Y1719		Famille Verte Large Ashtray	110	S2835	G-12	...Be A Good One, Abraham Lincoln.....	40	
Y2366	G-7	Tobacco Leaf Fu Dog Jar - Small	535	S	S2836	G-12	The Object Of Love, Woodrow Wilson.....	40
Y8400	G-3	Blue & White Monteith Bowl.....	645	S	S2837	G-12	Great Minds, Eleanor Roosevelt.....	40
				S2838	G-12	End War, John F. Kennedy	40	
				S2839	G-12	Actions Inspire...Leader, John Q. Adams.....	40	
				S2840	G-12	Life Is One Grand Song, Ronald Reagan.....	40	

Item No	Page #	Description	List Price
RING TRAYS - Continued			
S2841	G-12	We Can't Help Everyone..., Ronald Reagan.....	40
S627B	G-11	Ability Takes You to The Top. Character Keeps You There.....	75
WH11D	G-10	Diplomatic Eagle (Blue Border) - No Text.....	40
W1201	G-10	Friendship Sweetens the Cares of Life.....	40

PRICE LIST 2020 -2021



MILESTONE

N = New Item
S = Special Order
R = Retired with Stock

Warehouse & Accounts
5 Corporate Drive
Cranbury, NJ 08512
Phone: 609.409.1490
Order: 1.800.443.8225
Fax: 609.409.6702

New York City Showroom
41 Madison Avenue, 21st Floor
New York, NY 10010
Phone: 212.685.3050
Phone: 800.242.3050
Fax: 212.213.3978 www.mottahedeh.com

Prices are retail subject to usual trade discount. F.O.B. Mottahedeh Warehouse Cranbury, NJ.

PRICES ARE SUBJECT TO CHANGE WITHOUT NOTICE. Dinnerware patterns are listed in alphabetical order. Accessories are listed by item number within each pattern heading. Items shown in the catalogue but not listed on this price list have been discontinued.

Item No	Page #	Description	List Price	Item No	Page #	Description	List Price
APPLES, BERRIES & CHERRIES				PICNIC SETS			
S1900		AB&C 4 Piece Place Setting.....	115 R	T1640	M-4	Ming Yellow & Blue Tin Picnic Set s/4.....	55
S1901	D-54B	AB&C Dinner Plate.....	35 R	T1981	M-4	American Ships Tin Picnic Set s/6.....	70
S1902		AB&C Dessert Plate.....	20 R	T5200	M-4	Lowestoft Rose Tin Picnic Set s/4.....	55
S1904		AB&C Tea Cup & Saucer.....	30 R	T6200	M-4	Blue Dragon Tin Picnic Set s/4.....	55
S1905		AB&C Service/Buffer Plate.....	55 R	T7200	M-4	Turkish Garden Tin Picnic Set s/4.....	55
S1911		AB&C Rim Soup Plate.....	45 R	T8200	M-4	Lotus Picnic Tin Picnic Set s/4.....	55
S1913	D-54B	AB&C Mug.....	30 R	T9200	M-4	Blue Pagoda Tin Picnic Set s/4.....	55
S1914		AB&C Oval Platter - Small.....	65 R				
S1915		AB&C Oval Platter - Large.....	85 R	ANIMAL PITCHERS			
S1917	D-54B	AB&C Serving Bowl - Small.....	30 R	MS8902		Frog Pitcher.....	45 R
S1918	D-54B	AB&C Serving Bowl - Medium.....	50 R	MS8903		Monkey Pitcher.....	45 R
S1919	D-54B	AB&C Serving Bowl - Large.....	60 R	MS8904		Dog Pitcher.....	45 R
S1920		AB&C Star Tray.....	55 R	MS8905		Owl Pitcher.....	45 R
S1921		AB&C Lemon Tray.....	55 R	MS8907		Cat Pitcher.....	45 R
LEAF STONEWARE							
White Silk							
MS1001	M-2	Leaf White Silk Dinner Plate.....	28				
MS1002	M-2	Leaf White Silk Dessert Plate.....	25				
MS1004	M-2	Leaf White Silk Mug.....	25				
MS1006	M-2	Leaf White Silk Pasta Bowl.....	45				
MS1007	M-2	Leaf White Silk Cereal Bowl.....	30				
MS1008	M-2	Leaf White Silk Fruit Bowl.....	20				
MS1009	M-2	Leaf White Silk Medium Serving Bowl.....	95				
Blue Haze							
MS2001	M-2	Leaf Blue Haze Dinner Plate.....	28				
MS2002	M-2	Leaf Blue Haze Dessert Plate.....	25				
MS2004	M-2	Leaf Blue Haze Mug.....	25				
MS2006	M-2	Leaf Blue Haze Pasta Bowl.....	45				
MS2007	M-2	Leaf Blue Haze Cereal Bowl.....	30				
MS2008	M-2	Leaf Blue Haze Fruit Bowl.....	20				
MS2009	M-2	Leaf Blue Haze Medium Serving Bowl.....	95				
Topaz							
MS3001	M-2	Leaf Topaz Dinner Plate.....	28				
MS3002	M-2	Leaf Topaz Dessert Plate.....	25				
MS3004	M-2	Leaf Topaz Mug.....	25				
MS3006	M-2	Leaf Topaz Pasta Bowl.....	45				
MS3007	M-2	Leaf Topaz Cereal Bowl.....	30				
MS3008	M-2	Leaf Topaz Fruit Bowl.....	20				
MS3009	M-2	Leaf Topaz Medium Serving Bowl.....	95				
Agate							
MS4001	M-2	Leaf Agate Dinner Plate.....	28				
MS4002	M-2	Leaf Agate Dessert Plate.....	25				
MS4004	M-2	Leaf Agate Mug.....	25				
MS4006	M-2	Leaf Agate Pasta Bowl.....	45				
MS4007	M-2	Leaf Agate Cereal Bowl.....	30				
MS4008	M-2	Leaf Agate Fruit Bowl.....	20				
MS4009	M-2	Leaf Agate Medium Serving Bowl.....	95				